

DANVILLE, ILLINOIS


AL-5117 (FAA)

# ILS or LOC RWY 21

DANVILLE/VERMILION RGNL (DNV)

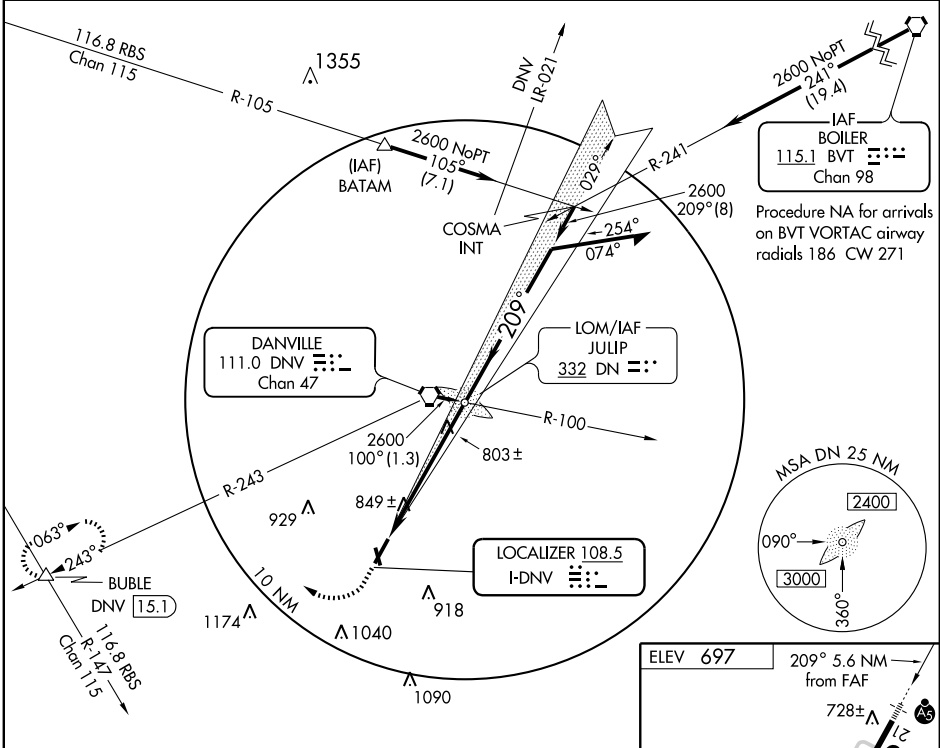
LOC I-DNV <b>108.5</b>	APP CRS <b>209°</b>	Rwy Idg <b>6002</b>
		TDZE <b>697</b>
		Apt Elev <b>697</b>

**⚠** If local altimeter not received, use University of Illinois-Willard altimeter setting, and increase all DAs/MDAs 100 feet.

**MALSRS** 

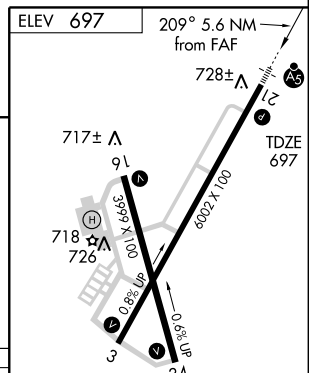
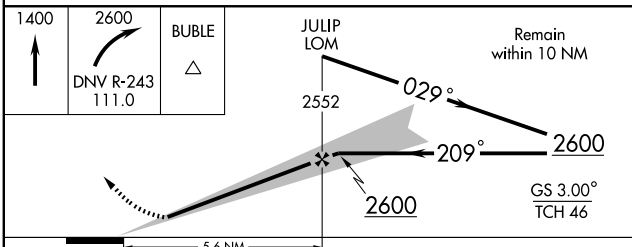
**MISSED APPROACH:** Climb to 1400, then climbing right turn to 2600 via DNV R-243 to BUBLE Int and hold.

AWOS-3 <b>119.275</b>	CHAMPAIGN APP CON ★ <b>121.35 291.0</b>	CLNC DEL <b>121.7</b>	UNICOM <b>122.7 (CTAF)</b>
--------------------------	--	--------------------------	-------------------------------



EC-3, 22 OCT 2009 to 19 NOV 2009

EC-3, 22 OCT 2009 to 19 NOV 2009



CATEGORY	A	B	C	D
S- ILS 21	897-½ 200 (200-½)			
S- LOC 21	1060-½	363 (400-½)	1060-¾ 363 (400-¾)	
CIRCLING	1120-1 423 (500-1)	1160-1 463 (500-1)	1160-1½ 463 (500-1½)	1260-2 563 (600-2)

HIRL Rwy 3-21 **Ⓛ**

MIRL Rwy 16-34 **Ⓛ**

REIL Rws 16 and 34 **Ⓛ**

FAF to MAP 5.6 NM

Knots	60	90	120	150	180
Min:Sec	5:36	3:44	2:48	2:14	1:52

DANVILLE, ILLINOIS  
Amdt 7 09183

40° 12' N-87° 36' W

# DANVILLE/VERMILION RGNL (DNV)

## ILS or LOC RWY 21