

# VOR RWY 9

HAGERSTOWN RGNL-RICHARD A. HENSON FIELD (HGR)

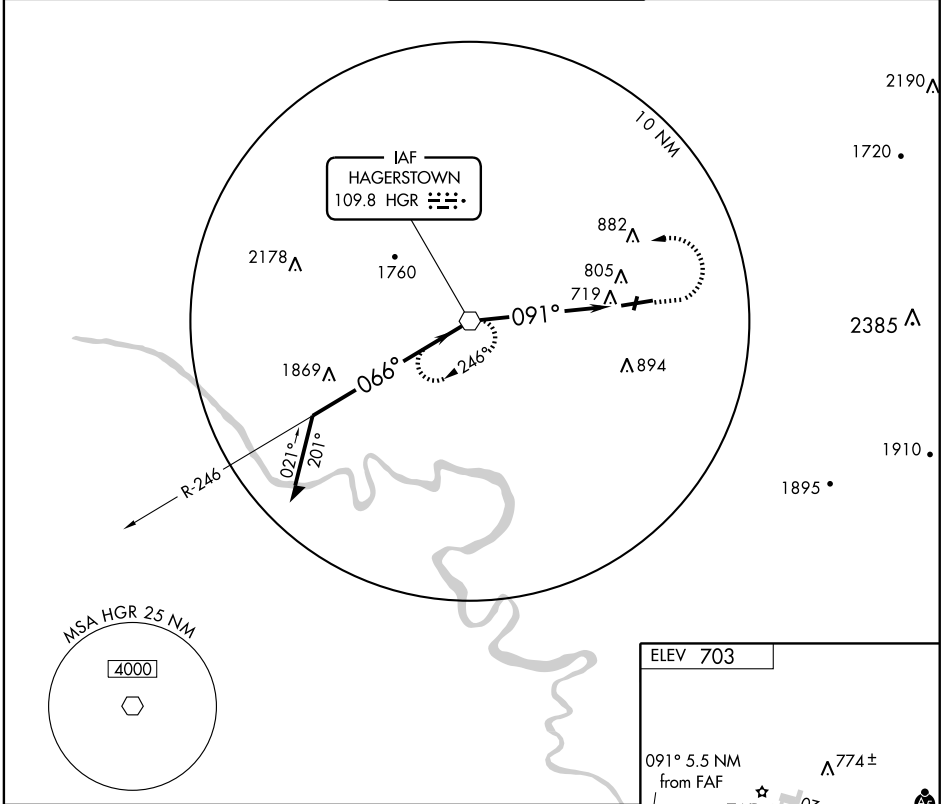
VOR HGR <b>109.8</b>	APP CRS <b>091°</b>	Rwy Idg <b>7000</b>
		TDZE <b>695</b>
		Apt Elev <b>703</b>

**▼** When local altimeter setting not received, use Martinsburg altimeter setting and increase all MDA 80 feet; increase S-9 Cat C and D visibility ¼ mile.

**▲**

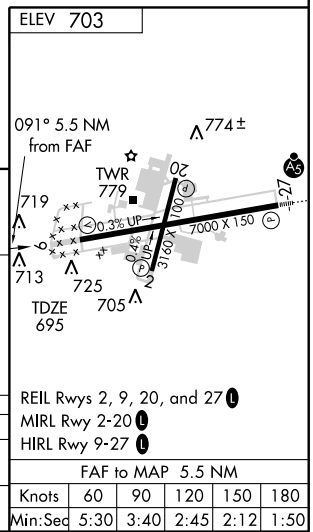
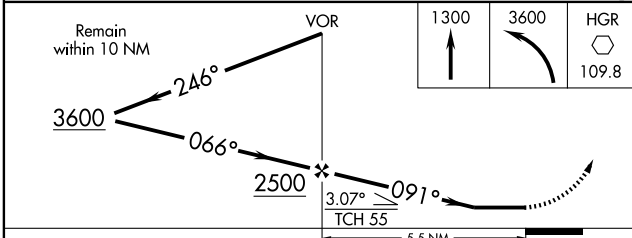
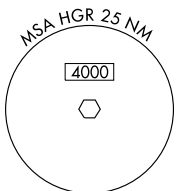
**MISSED APPROACH:** Climb to 1300 then climbing left turn to 3600 direct HGR VOR and hold, continue climb-in-hold to 3600.

ASOS <b>126.375</b>	WASHINGTON CENTER <b>134.15 385.4</b>	HAGERSTOWN TOWER ★ <b>120.3 (CTAF) 225.4</b>	GND CON <b>120.8</b>	UNICOM <b>122.95</b>
------------------------	--	---	-------------------------	-------------------------



NE-3, 22 OCT 2009 to 19 NOV 2009

NE-3, 22 OCT 2009 to 19 NOV 2009



CATEGORY	A	B	C	D
S-9		1060-1 365 (400-1)		1060-1¼ 365 (400-1¼)
CIRCLING	1140-1 437 (500-1)	1160-1 457 (500-1)	1160-1½ 457 (500-1½)	1260-2 557 (600-2)

REIL Rwy 2, 9, 20, and 27	⓪
MIRL Rwy 2-20	⓪
HIRL Rwy 9-27	⓪
FAF to MAP 5.5 NM	
Knots	60 90 120 150 180
Min:Sec	5:30 3:40 2:45 2:12 1:50

# VOR RWY 9