

WAAS CH <b>86911</b> <b>W27A</b>	APP CRS <b>269°</b>	Rwy Idg TDZE Apt Elev	<b>7000</b> <b>701</b> <b>703</b>
--	------------------------	-----------------------------	---

# RNAV (GPS) RWY 27

HAGERSTOWN RGNL-RICHARD A. HENSON FIELD (HGR)

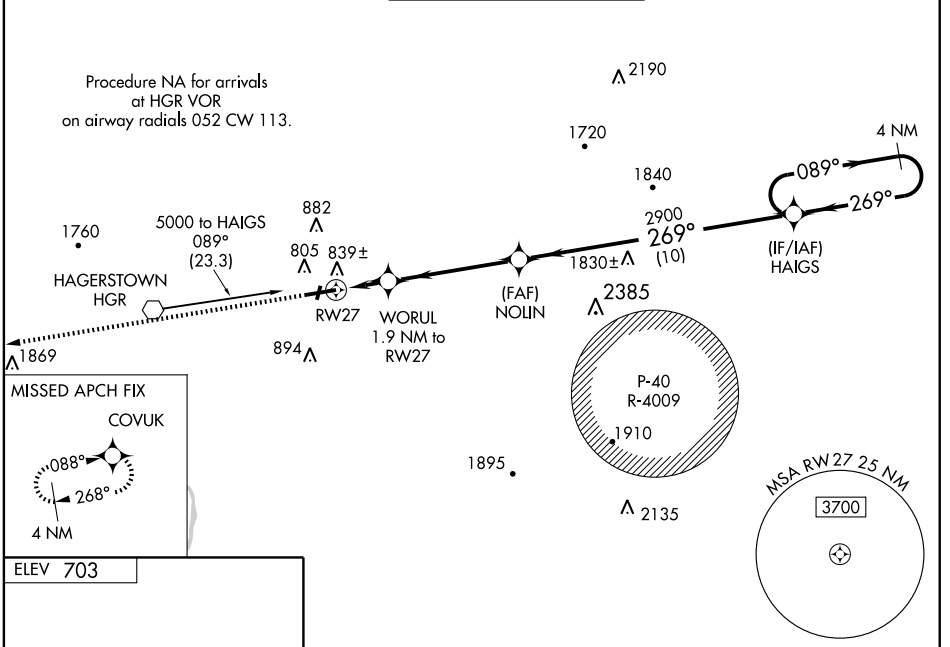
**⚠** For uncompensated Baro-VNAV systems, LNAV/VNAV NA below -16°C (4°F) or above 48°C (118°F). DME/DME RNP-0.3 NA. When local altimeter setting not received, use Martinsburg altimeter setting and increase LPV DA to 971, LNAV/VNAV DA to 1175, and all MDA 80 feet; increase LNAV/VNAV all Cats, and LNAV Cat C visibility ¼ mile. VDP and Baro-VNAV NA when using Martinsburg altimeter setting. For inoperative MALS, increase LNAV Cat D visibility ¼ mile. For inoperative MALS when using Martinsburg altimeter setting, increase LPV all Cats visibility ½.

MALS



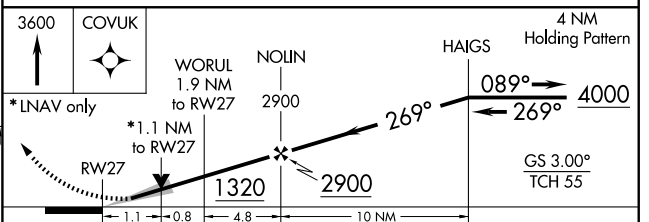
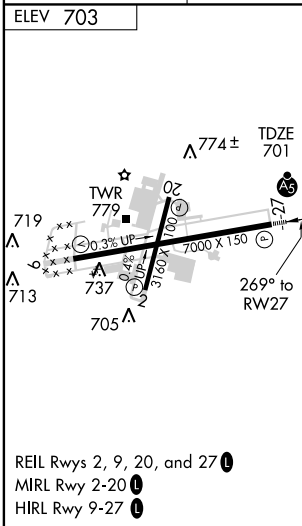
**MISSED APPROACH:**  
Climb to 3600 direct COVUK and hold.

ASOS <b>126.375</b>	WASHINGTON CENTER <b>134.15 385.4</b>	HAGERSTOWN TOWER * <b>120.3 (CTAF) 0 225.4</b>	GND CON <b>120.8</b>	UNICOM <b>122.95</b>
------------------------	--	---	-------------------------	-------------------------



NE-3, 22 OCT 2009 to 19 NOV 2009

NE-3, 22 OCT 2009 to 19 NOV 2009



CATEGORY	A	B	C	D
LPV DA	901-½		200 (200-½)	
LNAV/VNAV DA	1105-1		404 (500-1)	
LNAV MDA	1100-½		399 (400-½)	
CIRCLING	1140-1 437 (500-1)	1160-1 457 (500-1)	1160-½ 457 (500-½)	1260-2 557 (600-2)