

ILS or LOC RWY 27

HAGERSTOWN RGNL-RICHARD A. HENSON FIELD (HGR)

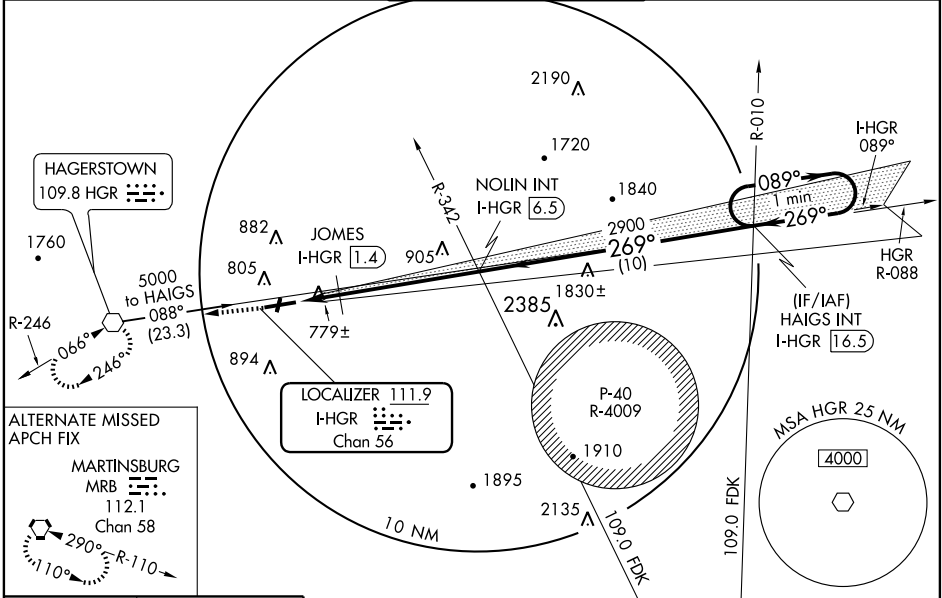
LOC/DME I-HGR 111.9 Chan 56	APP CRS 269°	Rwy Idg 7000 TDZE 701 Apt Elev 703
---	------------------------	---

⚠ When local altimeter setting not received; use Martinsburg altimeter setting and increase DA to 971 and all MDA 80 feet; increase S-LOC 27 Cat D and JOMES Fix minimum S-LOC 27 Cat C visibility ¼ mile. VDP NA when using Martinsburg altimeter setting. For inoperative MALSRS, increase JOMES Fix minimums S-LOC 27 Cat D visibility ¼ mile. For inoperative MALSRS, when using Martinsburg altimeter setting, increase S-ILS 27 all Cats visibility ½ mile.

MALSRS

MISSED APPROACH:
Climb to 4000 direct HGR VOR and hold, continue climb-in-hold to 4000.

ASOS 126.375	WASHINGTON CENTER 134.15 385.4	HAGERSTOWN TOWER * 120.3 (CTAF) 0 225.4	GND CON 120.8	UNICOM 122.95
------------------------	--	---	-------------------------	-------------------------



NE-3, 22 OCT 2009 to 19 NOV 2009

NE-3, 22 OCT 2009 to 19 NOV 2009

ELEV 703

REIL Rwy 2, 9, 20, and 27 **⓪**
MIRL Rwy 2-20 **⓪**
HIRL Rwy 9-27 **⓪**

FAF to MAP 6.7 NM

Knots	60	90	120	150	180
Min:Sec	6:42	4:28	3:21	2:41	2:14

CATEGORY	A	B	C	D
S-ILS 27	901-½ 200 (200-½)			
S-LOC 27	1120-½ 419 (500-½)	1120-¾ 419 (500-¾)		419 (500-¾)
CIRCLING	1140-1 437 (500-1)	1160-1 457 (500-1)	1160-1½ 457 (500-1½)	1260-2 557 (600-2)
	JOMES FIX MINIMUMS			
S-LOC 27	1040-½ 339 (400-½)			1040-¾ 339 (400-¾)
CIRCLING	1140-1 437 (500-1)	1160-1 457 (500-1)	1160-1½ 457 (500-1½)	1260-2 557 (600-2)

ILS or LOC RWY 27