

SOUTH BOSTON, VIRGINIA

AL-5112 (FAA)

VOR-A

VOR SBV 110.4 Chan 41	APP CRS 081°	Rwy Idg TDZE Apt Elev	N/A N/A 420
------------------------------------	------------------------	-----------------------------	--

SOUTH BOSTON / WILLIAM M. TUCK (W78)

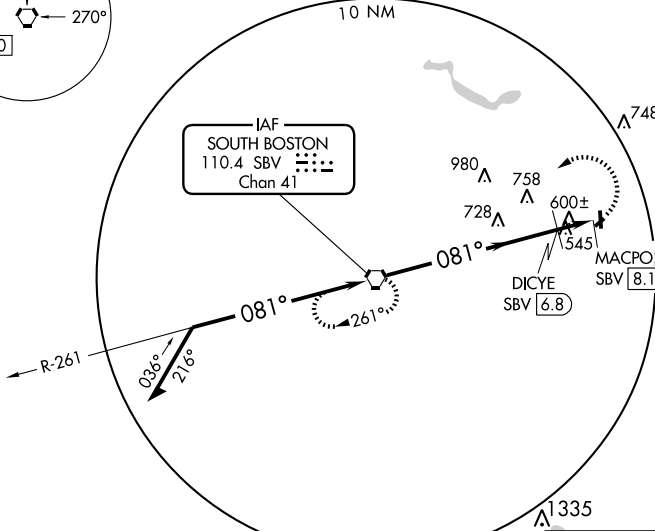
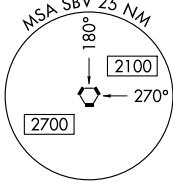
NA Use Danville Rgnl altimeter setting, when not received, use Lynchburg Rgnl/Preston Glenn Field altimeter setting and increase all MDA 100 feet, and increase all Cat C visibility ¼ mile.

MISSED APPROACH: Climbing left turn to 3000 direct SBV VORTAC and hold.

WASHINGTON CENTER
124.05 307.0

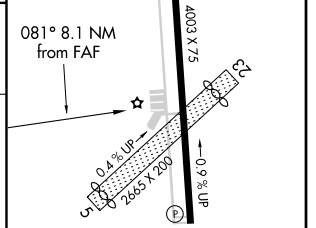
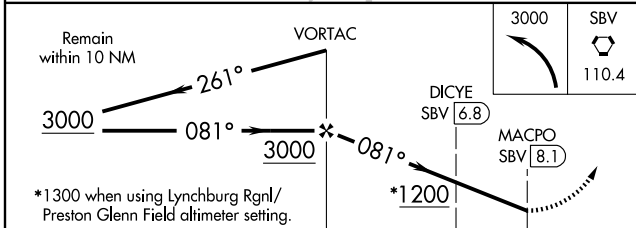
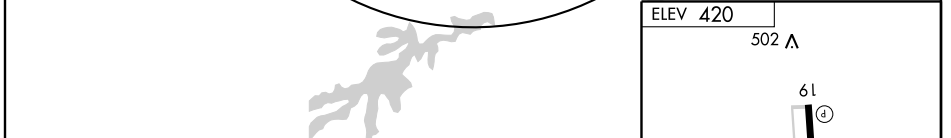
UNICOM
122.8 (CTAF) 0

NoPT for arrival on SBV VORTAC
airway radials 236 CW 252.



NE-3, 22 OCT 2009 to 19 NOV 2009

NE-3, 22 OCT 2009 to 19 NOV 2009



CATEGORY	A	B	C	D
CIRCLING	1200-1 780 (800-1)	1200-1¼ 780 (800-1¼)	1200-2¼ 780 (800-2¼)	NA
DICYE DME MINIMUMS				
CIRCLING	960-1	540 (600-1)	960-1½ 540 (600-1½)	NA

FAF to MAP 8.1 NM					
Knots	60	90	120	150	180
Min:Sec	8:06	5:24	4:03	3:14	2:42

SOUTH BOSTON, VIRGINIA
Amdt 8 09239

SOUTH BOSTON / WILLIAM M. TUCK (W78)

36°43'N - 78°51'W

VOR-A