

VOR-A

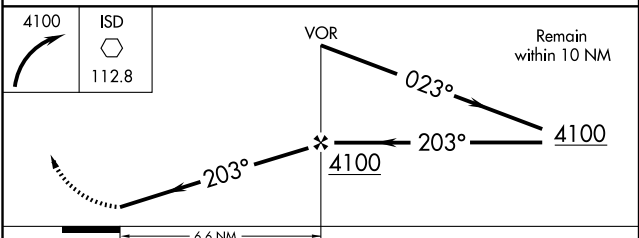
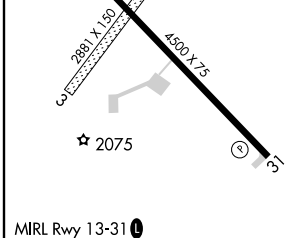
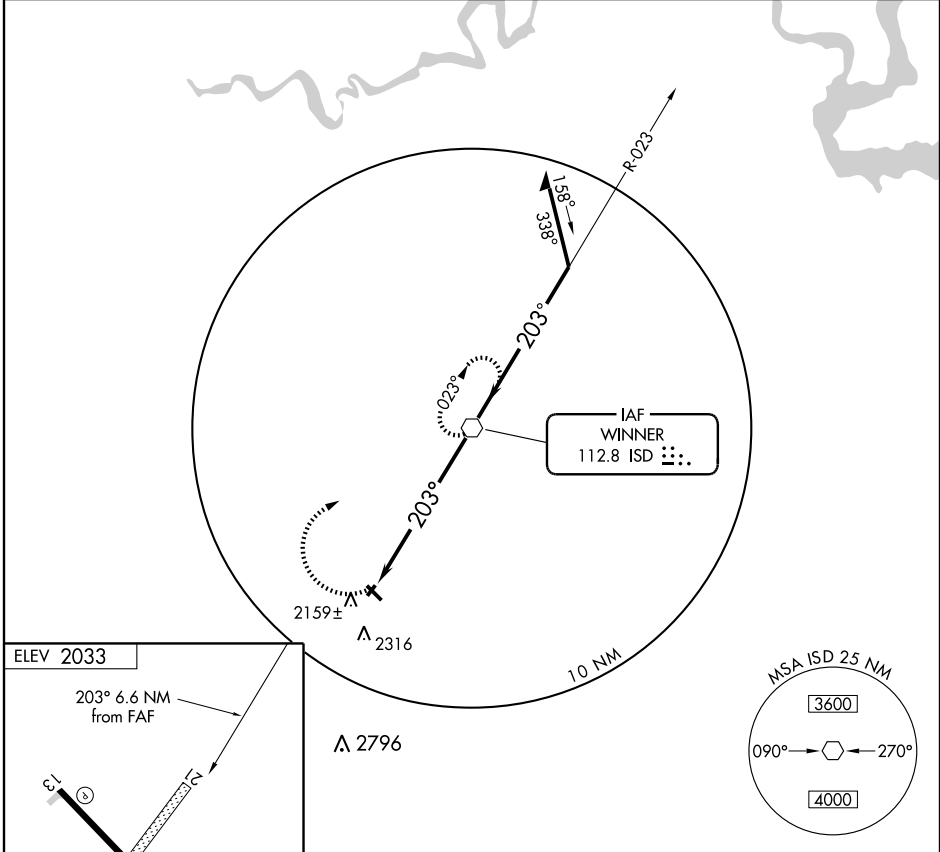
WINNER RGNL (ICR)

VOR ISD 112.8	APP CRS 203°	Rwy Idg TDZE Apt Elev	N/A N/A 2033
-------------------------	------------------------	-----------------------------	---

▼ When local altimeter setting not received, use Valentine, NE altimeter setting and increase all MDA 240 feet and visibility Cat B ¼ mile, Cats C and D 1 mile.

▲ MISSED APPROACH: Climbing right turn to 4100 direct ISD VOR and hold.

ASOS 126.775	HURON RADIO 122.1R	UNICOM 122.8 (CTAF)
------------------------	------------------------------	-------------------------------



FAF to MAP 6.6 NM					
Knots	60	90	120	150	180
Min:Sec	6:36	4:24	3:18	2:38	2:12
CATEGORY	A		B		
CIRCLING	2580-1		547 (600-1)		C
					D
			2680-1¾		2680-2
			647 (700-1¾)		647 (700-2)

NC-1, 22 OCT 2009 to 19 NOV 2009

NC-1, 22 OCT 2009 to 19 NOV 2009