

RNAV (GPS) RWY 31

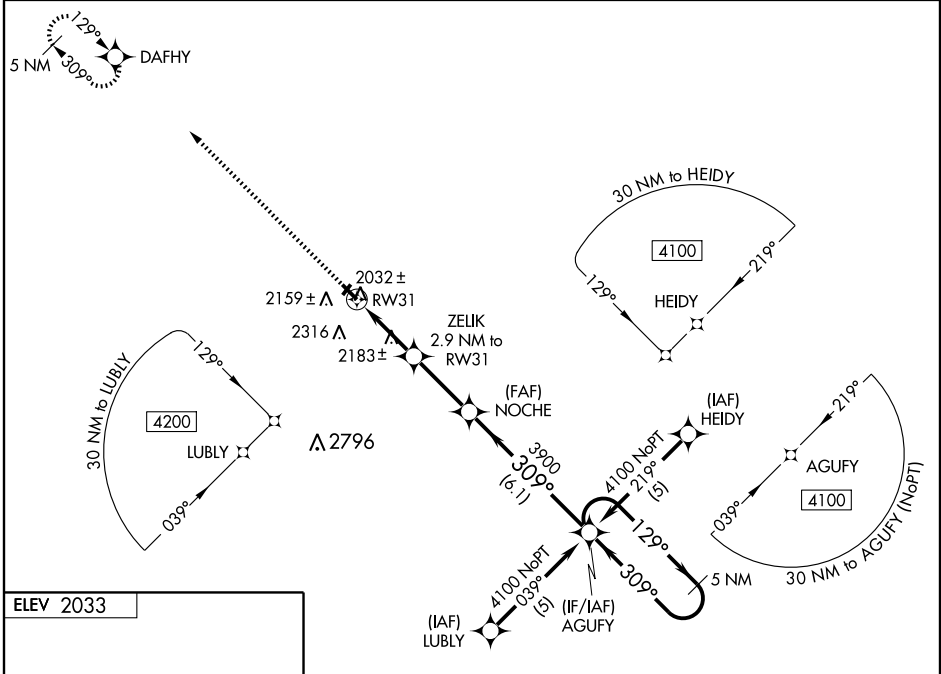
WINNER RGNL (ICR)

WAAS CH 97612 W31A	APP CRS 309°	Rwy Idg TDZE Apt Elev	4500 2021 2033
---------------------------------	------------------------	-----------------------------	---

▼ DME/DME RNP-0.3 NA.
▲ When local altimeter setting not received, use Valentine, NE altimeter setting and increase all DA/MDA 240 feet; increase LPV all Cats visibility ¾ mile, LNAV/VNAV all Cats visibility 1 mile, LNAV Cat C visibility ½ mile, circling Cat B visibility ¼ mile and Cat C visibility 1 mile. For uncompensated Baro-VNAV systems, LNAV/VNAV NA below -19°C (-2°F) or above 54°C (130°F). Baro-VNAV and VDP NA when using Valentine altimeter setting.

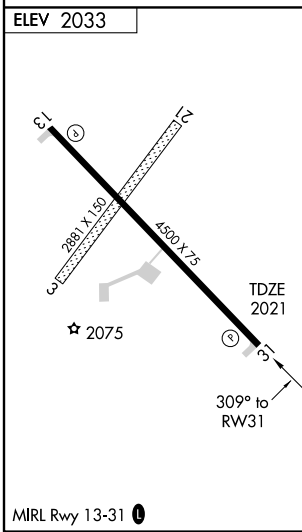
MISSED APPROACH: Climb to 4100 direct DAFHY and hold.

ASOS 126.775	HURON RADIO 122.1R	UNICOM 122.8 (CTAF)
------------------------	------------------------------	-------------------------------



NC-1, 22 OCT 2009 to 19 NOV 2009

NC-1, 22 OCT 2009 to 19 NOV 2009



4100	DAFHY	NOCHE		AGUFY	5 NM Holding Pattern
*LNAV only		ZELIK 2.9 NM to RW31	AGUFY		4100
1.2 NM to RW31		2980	3900	GS 3.00° TCH 35	
1.2	1.7	2.8 NM	6.1 NM		
CATEGORY	A	B	C	D	
LPV DA	2271-1		250 (300-1)		NA
LNAV/VNAV DA	2581-2		560 (600-2)		NA
LNAV MDA	2440-1	419 (500-1)		2440-1¼ 419 (500-1¼)	NA
CIRCLING	2580-1	547 (600-1)		2680-1¾ 647 (700-1¾)	NA