

# RNAV (GPS) RWY 13

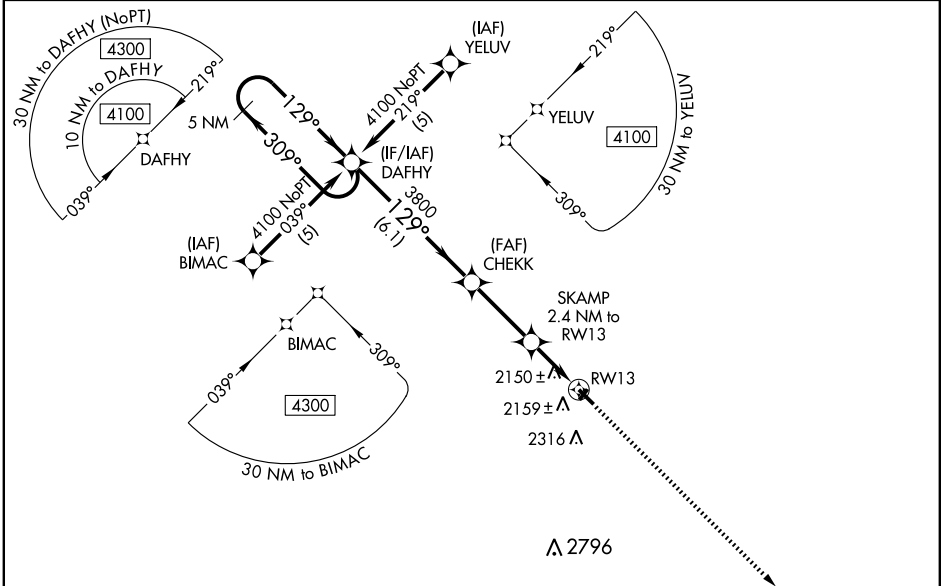
WINNER RGNL (ICR)

WAAS CH <b>61212</b> <b>W13A</b>	APP CRS <b>129°</b>	Rwy Idg TDZE Apt Elev	<b>4500</b> <b>2020</b> <b>2033</b>
--	------------------------	-----------------------------	---

**⚠** DME/DME RNP-0.3 NA. For uncompensated Baro-VNAV systems, LNAV/VNAV NA below -19°C (-2°F) or above 54°C (130°F).  
**⚠** Baro-VNAV and VDP NA when using Valentine altimeter setting.  
 When local altimeter setting not received, use Valentine, NE altimeter setting and increase all DA/MDA 240 feet; increase LPV all Cats visibility ¾ mile, LNAV/VNAV all Cats visibility 1 mile, LNAV Cat C visibility ¾ mile, circling Cat B visibility ¼ mile and Cat C visibility 1 mile.

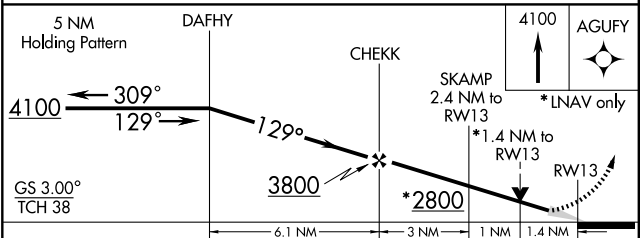
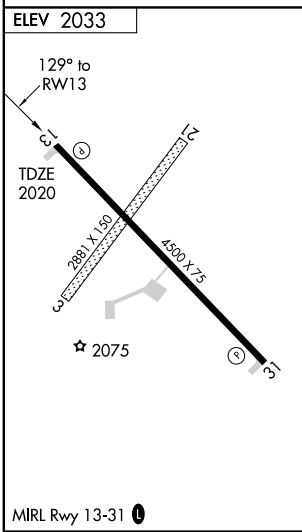
MISSED APPROACH: Climb to 4100 direct AGUFY and hold.

ASOS <b>126.775</b>	HURON RADIO <b>122.1R</b>	UNICOM <b>122.8 (CTAF)</b>
------------------------	------------------------------	-------------------------------



NC-1, 22 OCT 2009 to 19 NOV 2009

NC-1, 22 OCT 2009 to 19 NOV 2009



CATEGORY	A	B	C	D
LPV DA		2270-1	250 (300-1)	NA
LNAV/VNAV DA		2456-1½	436 (500-1½)	NA
LNAV MDA	2480-1	460 (500-1)	2480-1¼ 460 (500-1¼)	NA
CIRCLING	2580-1	547 (600-1)	2680-1¾ 647 (700-1¾)	NA