

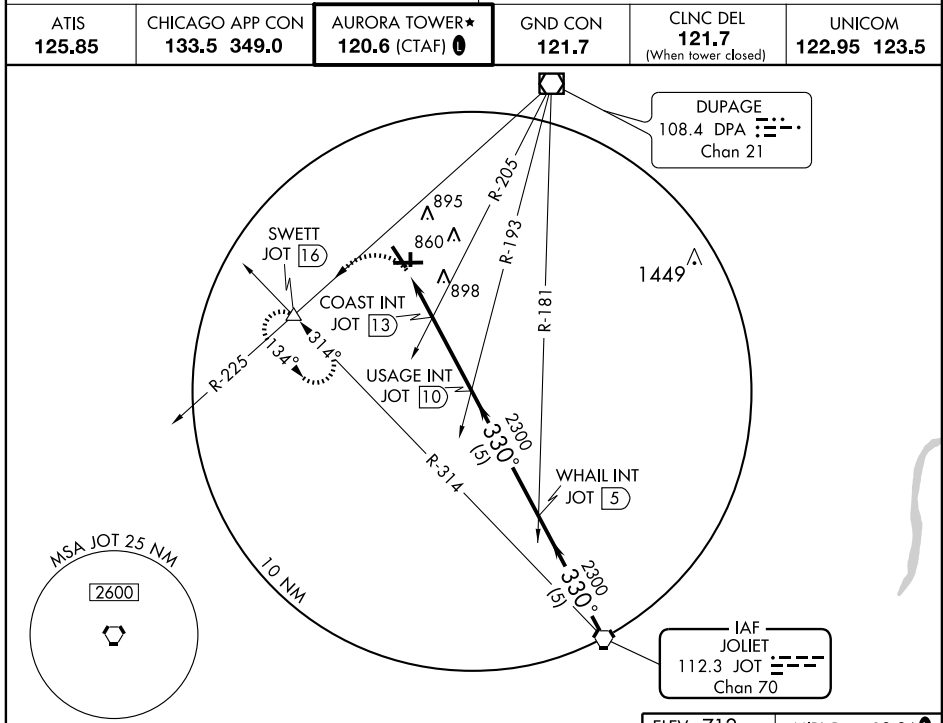
VOR RWY 36

CHICAGO/AURORA MUNI (A.R.R.)

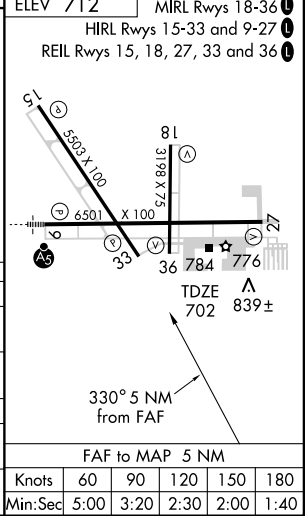
VORTAC JOT 112.3 Chan 70	APP CRS 330°	Rwy Idg TDZE 702 Apt Elev 712	3198
--	------------------------	---	-------------

ATIS 125.85 **CHICAGO APP CON 133.5 349.0** **AURORA TOWER★ 120.6 (CTAF) 0** **GND CON 121.7** **CLNC DEL 121.7** (When tower closed) **UNICOM 122.95 123.5**

MISSED APPROACH: Climbing left turn to 3000 via DPA R-225 to SWETT Int and hold.



3000 DPA R-225 108.4	SWETT △	VGSI and descent angles not coincident			
		USAGE INT JOT 10	WHAIL INT JOT 5	VORTAC	
COAST INT JOT 13		2300		330° 2300	
JOT 15		1360		2.95° TCH 45	
1.3 0.7		3 NM		5 NM	
CATEGORY	A	B	C	D	
S-36	1360-1 658 (700-1)		1360-1 ³ / ₄ 658 (700-1 ³ / ₄)	1360-2 658 (700-2)	
CIRCLING	1360-1 648 (700-1)		1360-1 ³ / ₄ 648 (700-1 ³ / ₄)	1360-2 648 (700-2)	
COAST FIX MINIMUMS					
S-36	1160-1 458 (500-1)		1160-1 ¹ / ₄ 458 (500-1 ¹ / ₄)	1160-1 ¹ / ₂ 458 (500-1 ¹ / ₂)	
CIRCLING	1200-1 488 (500-1)		1200-1 ¹ / ₂ 488 (500-1 ¹ / ₂)	1280-2 568 (600-2)	



EC-3, 22 OCT 2009 to 19 NOV 2009

EC-3, 22 OCT 2009 to 19 NOV 2009