

WAAS CH <b>49105</b> W33A	APP CRS <b>328°</b>	Rwy ldg 5503 TDZE 706 Apt Elev 712
---------------------------------	------------------------	---

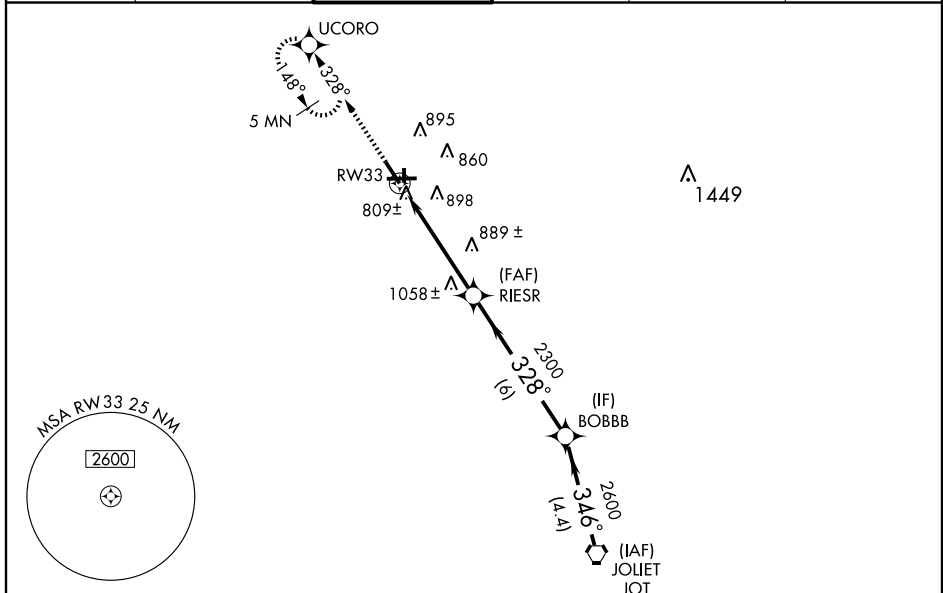
# RNAV (GPS) RWY 33

CHICAGO/AURORA MUNI (A.R.R.)

**⚠** DME/DME RNP-0.3 NA. Baro-VNAV NA when using Chicago O'Hare Intl altimeter setting. For uncompensated Baro-VNAV systems, LNAV/VNAV NA below -16° C (4°F) or above 47° C (116° F). Visibility reduction by helicopters NA. VDP NA when using Chicago O'Hare Intl altimeter setting. If local altimeter setting not received, use Chicago O'Hare Intl altimeter setting and increase all DAs 72 feet/MDAs 80 feet. For inoperative MALSR, increase LPV visibility to 1½ mile all Cats, LNAV Cats A/B visibility to 1 mile.

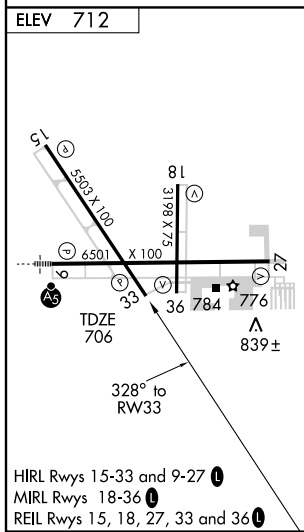
**⚠** MISSED APPROACH: Climb to 3000 direct UCORO and hold, continue climb-in-hold to 3000.

ATIS <b>125.85</b>	CHICAGO APP CON <b>133.5 349.0</b>	AURORA TOWER * <b>120.6 (CTAF) 0</b>	GND CON <b>121.7</b>	CLNC DEL <b>121.7</b> (When tower closed)	UNICOM <b>122.95 123.5</b>
-----------------------	---------------------------------------	---	-------------------------	---	-------------------------------



EC-3, 22 OCT 2009 to 19 NOV 2009

EC-3, 22 OCT 2009 to 19 NOV 2009



Procedure NA for arrival on JOT VORTAC  
airway radials 314 CW 328.

3000 UCORO *LNAV only RW33 1.3 NM 3.5 NM 6 NM 4.4 NM	VGS1 and RNAV glidepath not coincident. BOBBB VORTAC Procedure Turn NA			
	RIESR *1.3 NM to RW33 2300 328° 2600 346° 2600 GS 3.00° TCH 48			
CATEGORY	A	B	C	D
LPV DA	1042-¾		336 (400-¾)	
LNAV/VNAV DA	1194-1¼		488 (500-1¼)	
LNAV MDA	1140-¾		434 (500-¾)	
CIRCLING	1200-1		488 (500-1)	
			1200-1½ 488 (500-1½)	
			1280-2 568 (600-2)	