

RNAV (GPS) RWY 15

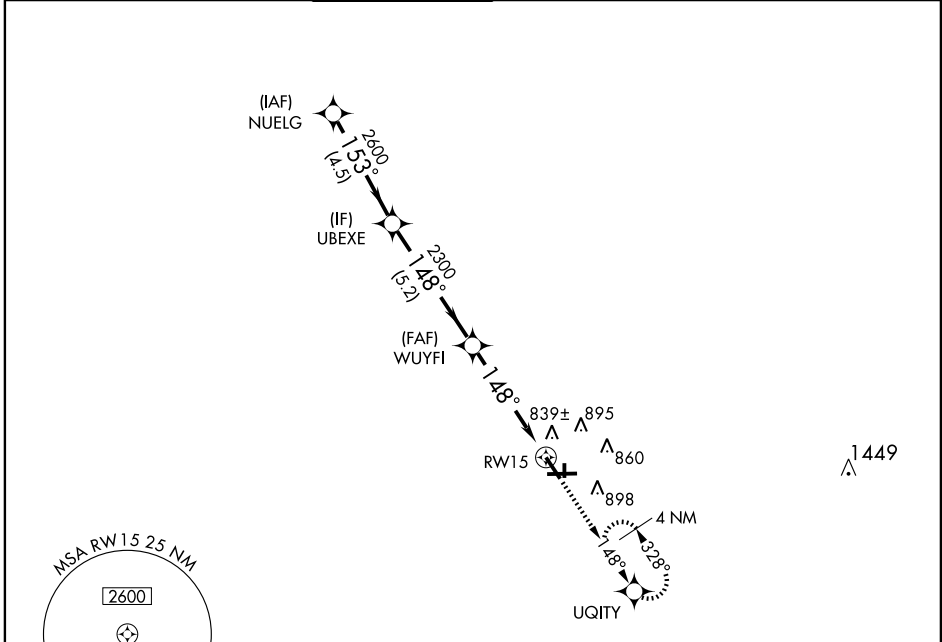
CHICAGO/AURORA MUNI (A.R.R.)

APP CRS 148°	Rwy Idg 5503 TDZE 712 Apt Elev 712
------------------------	---

▽ GPS or RNP-0.3 Required.
DME/DME RNP-0.3 NA.
▲ NA Baro-VNAV NA below -16° C (4° F).

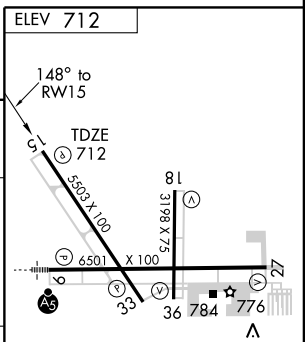
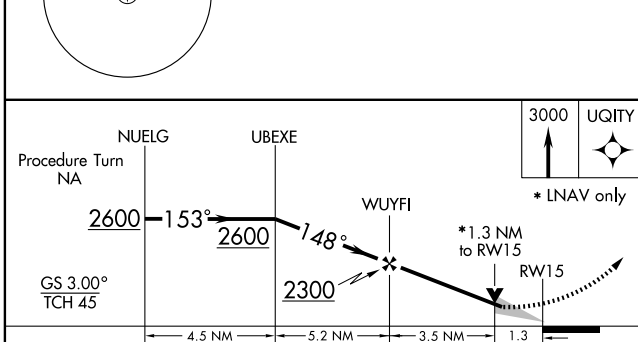
MISSED APPROACH: Climb to 3000 direct UQITY WP and hold.

ATIS 125.85	CHICAGO APP CON 133.5 349.0	AURORA TOWER★ 120.6 (CTAF) 0	GND CON 121.7	CLNC DEL 121.7 (When tower closed)	UNICOM 122.95 123.5
-----------------------	---------------------------------------	--	-------------------------	---	-------------------------------



EC-3, 22 OCT 2009 to 19 NOV 2009

EC-3, 22 OCT 2009 to 19 NOV 2009



CATEGORY	A	B	C	D
GLS PA DA	NA			
LNAV/VNAV DA	1100-1¼ 388 (400-1¼)			
LNAV MDA	1180-1 468 (500-1)	1180-1¼ 468 (500-1¼)	1180-1½ 468 (500-1½)	
CIRCLING	1200-1¼ 488 (500-1¼)	1200-1½ 488 (500-1½)	1280-2 568 (600-2)	

HIRL Rwy 15-33 and 9-27 **0**
MIRL Rwy 18-36 **0**
REIL Rwy 15, 18, 27, 33 and 36 **0**