

LOC/DME I-ROF 111.15 Chan 48 (Y)	APP CRS 328°	Rwy Idg TDZE Apt Elev	5503 706 712
--	------------------------	-----------------------------	---

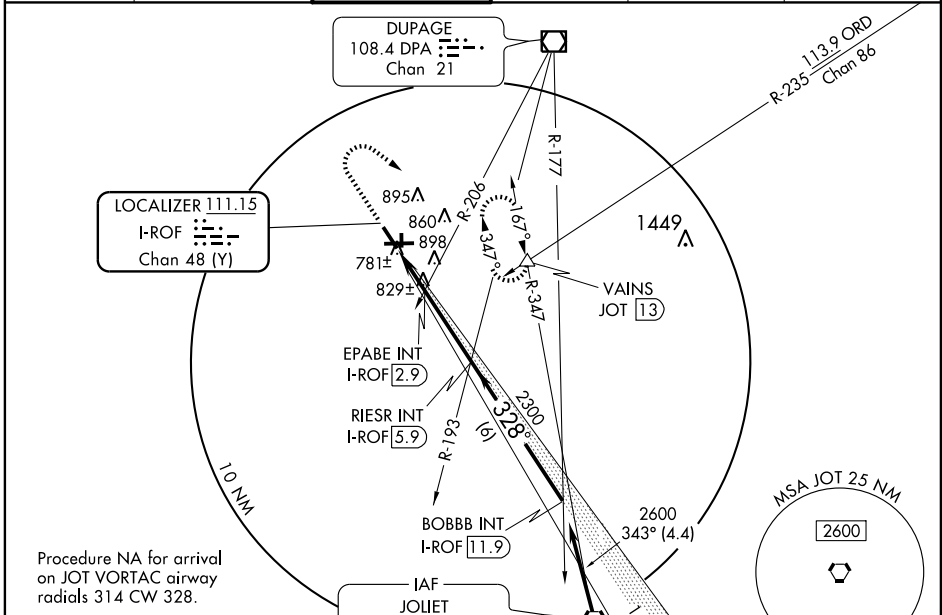
ILS or LOC RWY 33

CHICAGO/AURORA MUNI (A.R.R.)

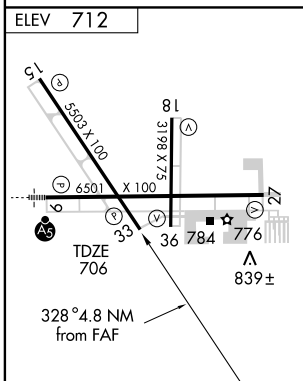
For inoperative MALSR, increase S-LOC 33 Cats A/B visibility to 1 mile, and EPABE fix minimums S-LOC 33 Cats A/B/C visibility to 1 mile. Visibility reduction by helicopters NA. VDP NA when using Chicago O'Hare Intl altimeter setting. If local altimeter setting not received, use Chicago O'Hare Intl altimeter setting and increase all DAs 72 feet/MDAs 80 feet.

MISSED APPROACH: Climb to 1400 then climbing right turn to 3000 via heading 120° and via JOT VORTAC R-347 to VAINS INT/13 DME and hold, continue climb-in-hold to 3000.

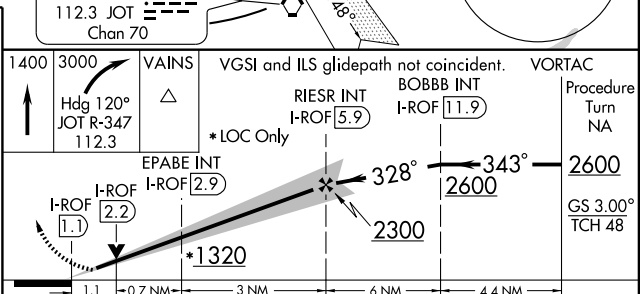
ATIS 125.85	CHICAGO APP CON 133.5 349.0	AURORA TOWER★ 120.6 (CTAF) 0	GND CON 121.7	CLNC DEL 121.7 (When tower closed)	UNICOM 122.95 123.5
-----------------------	---------------------------------------	--	-------------------------	---	-------------------------------



Procedure NA for arrival on JOT VORTAC airway radials 314 CW 328.



FAF to MAP 4.8 NM					
Knots	60	90	120	150	180
Min:Sec	4:48	3:12	2:24	1:55	1:36



CATEGORY	VAINS				Procedure Turn NA
	A	B	C	D	
S-ILS 33	956- ³ / ₄ 250 (300- ³ / ₄)				GS 3.00° TCH 48
S-LOC 33	1320- ³ / ₄	614 (700- ³ / ₄)	1320-1 ¹ / ₂ 614 (700-1 ¹ / ₂)	1320-1 ¹ / ₂ 614 (700-1 ¹ / ₂)	
CIRCLING	1320-1	608 (700-1)	1320-1 ³ / ₄ 608 (700-1 ³ / ₄)	1320-2 608 (700-2)	
EPABE FIX MINIMUMS					
S-LOC 33	1080- ³ / ₄ 374 (400- ³ / ₄)				
CIRCLING	1200-1	488 (500-1)	1200-1 ¹ / ₂ 488 (500-1 ¹ / ₂)	1280-2 568 (600-2)	

EC-3, 22 OCT 2009 to 19 NOV 2009

EC-3, 22 OCT 2009 to 19 NOV 2009