

GRAIN VALLEY, MISSOURI

AL-5101 (FAA)

VORTAC ANX <b>114.0</b> Chan <b>87</b>	APP CRS <b>212°</b>	Rwy ldg TDZE Apt Elev	<b>2206</b> <b>835</b> <b>835</b>
--	------------------------	-----------------------------	---

# VOR or GPS RWY 23

GRAIN VALLEY/EAST KANSAS CITY (3GV)

Use Charles B. Wheeler Downtown Airport altimeter setting.  
Straight-in minimums Rwy 23 not authorized at night.

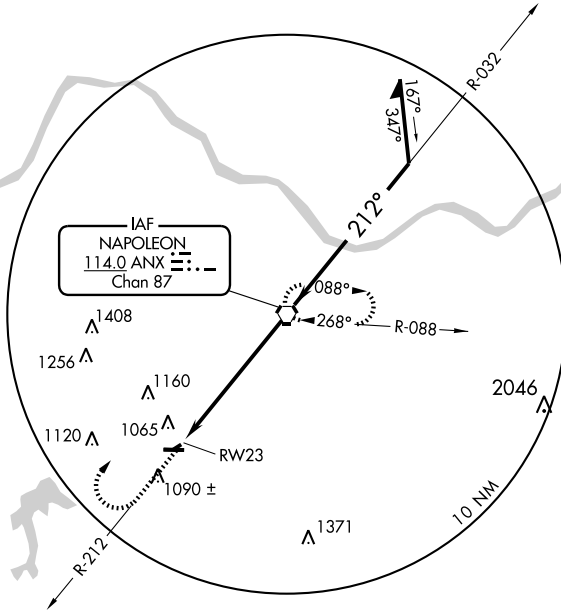
MISSED APPROACH: Climb to 1600 via ANX R-212 then climbing right turn to 2900 direct ANX VORTAC and hold.

▲ NA

KANSAS CITY APP CON  
**118.4 294.7**

CLNC DEL  
**121.3**

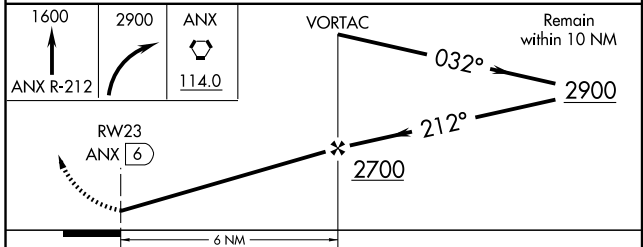
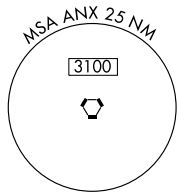
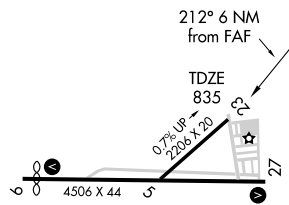
UNICOM  
**122.8 (CTAF) 0**



NC-3, 22 OCT 2009 to 19 NOV 2009

NC-3, 22 OCT 2009 to 19 NOV 2009

ELEV 835	Rwy 9 ldg 4206'
----------	-----------------



REIL Rwy 9  
MIRL Rwy 9-27

FAF to MAP 6 NM					
Knots	60	90	120	150	180
Min:Sec	6:00	4:00	3:00	2:24	2:00

CATEGORY	A	B	C	D
S-23	1400-1	565 (600-1)		NA
CIRCLING	1460-1	625 (700-1)		NA

GRAIN VALLEY, MISSOURI  
Amdt 3A 08157

39°01'N-94°13'W

# VOR or GPS RWY 23