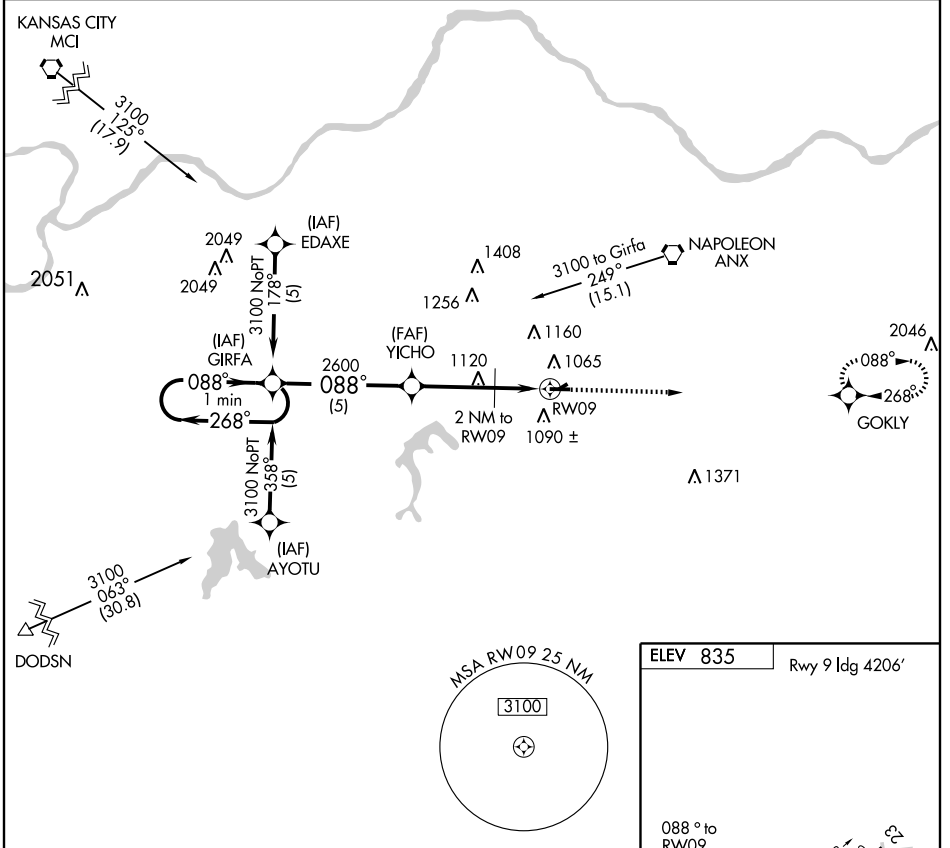


**GPS RWY 9**  
GRAIN VALLEY/ EAST KANSAS CITY (3GV)

APP CRS <b>088°</b>	Rwy Idg <b>4206</b>
	TDZE <b>818</b>
	Apt Elev <b>835</b>

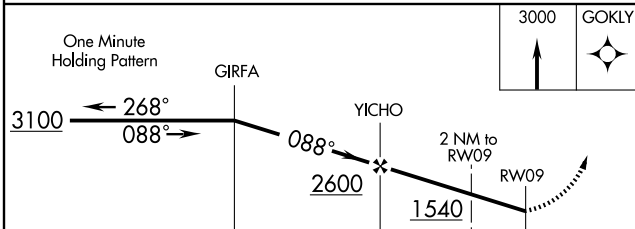
**NA** Use Charles B. Wheeler Downtown Airport altimeter setting. MISSED APPROACH: Climb to 3000 direct GOKLY WP and hold.

KANSAS CITY APP CON <b>118.4 294.7</b>	CLNC DEL <b>121.3</b>	UNICOM <b>122.8 (CTAF)</b>
---	--------------------------	-------------------------------



NC-3, 22 OCT 2009 to 19 NOV 2009

NC-3, 22 OCT 2009 to 19 NOV 2009



ELEV 835	Rwy 9 Idg 4206'
----------	-----------------

RWY 9 details:
 

- TDZE 818
- Runway length: 4506 X 44
- Slope: 0.7% UP 2206 X 20
- REIL Rwy 9
- MIRL Rwy 9-27

CATEGORY	A	B	C	D
S-9	1400-1	582 (600-1)		NA
CIRCLING	1460-1	625 (700-1)		NA