

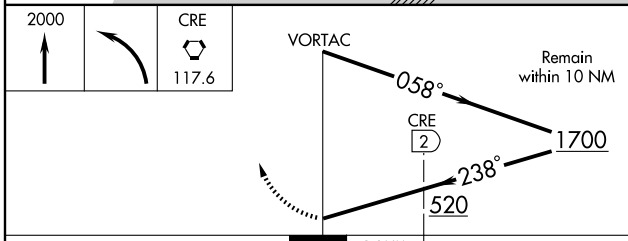
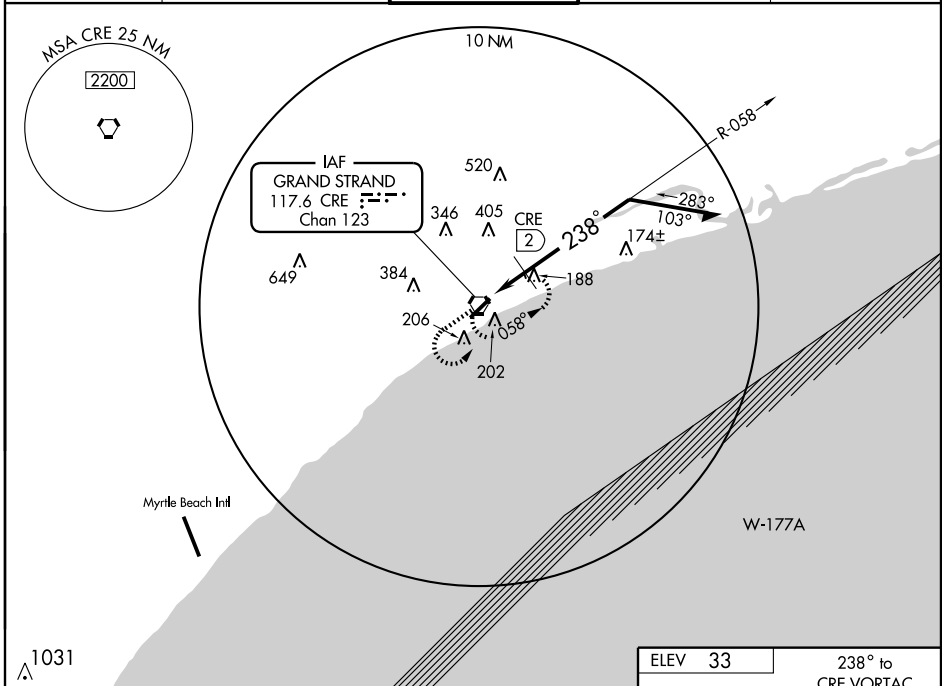
# VOR RWY 23

NORTH MYRTLE BEACH/GRAND STRAND (CRE)

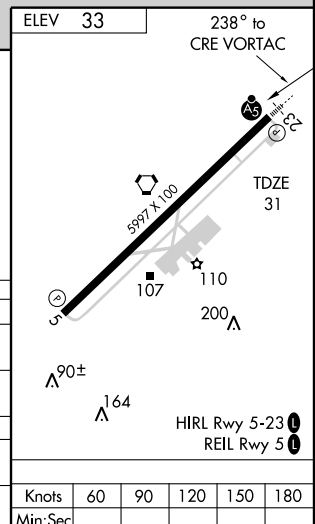
VORTAC CRE <b>117.6</b> Chan <b>123</b>	APP CRS <b>238°</b>	Rwy Idg <b>5997</b> TDZE <b>31</b> Apt Elev <b>33</b>
-----------------------------------------------	------------------------	-------------------------------------------------------------

<p>DME Minimums: For inoperative MALSR, increase S-23 Cat. A, B visibility to 1 mile, Cat. D visibility to 1 1/4 mile. VOR Minimums: For inoperative MALSR, increase S-23 Cat. A, B visibility to 1 mile.</p>	<p>MALSR</p>	<p>MISSED APPROACH: Climb to 2000 then left turn direct CRE VORTAC and hold.</p>		
			<p>ATIS <b>119.625</b></p>	<p>MYRTLE BEACH APP CON* <b>119.2 350.3</b></p>

ATIS <b>119.625</b>	MYRTLE BEACH APP CON* <b>119.2 350.3</b>	STRAND TOWER* <b>124.6 (CTAF) 0 257.6</b>	GND CON <b>121.8 257.6</b>	UNICOM <b>122.95</b>
------------------------	---------------------------------------------	----------------------------------------------	-------------------------------	-------------------------



CATEGORY	A	B	C	D
S-23	520-3/4	489 (500-3/4)		520-1 489 (500-1)
CIRCLING	520-1	487 (500-1)	520-1 1/2 487 (500-1 1/2)	720-2 1/4 687 (700-2 1/4)
DME MINIMUMS				
S-23	460-3/4	429 (500-3/4)		460-1 429 (500-1)
CIRCLING	520-1	487 (500-1)	520-1 1/2 487 (500-1 1/2)	720-2 1/4 687 (700-2 1/4)



# VOR RWY 23

SE-2, 22 OCT 2009 to 19 NOV 2009

SE-2, 22 OCT 2009 to 19 NOV 2009