

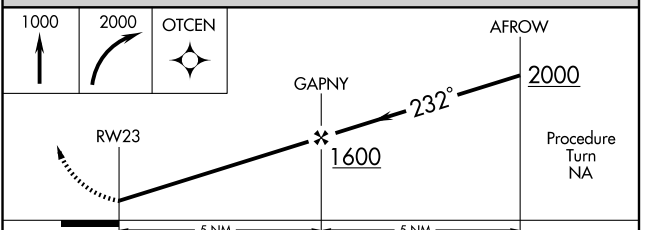
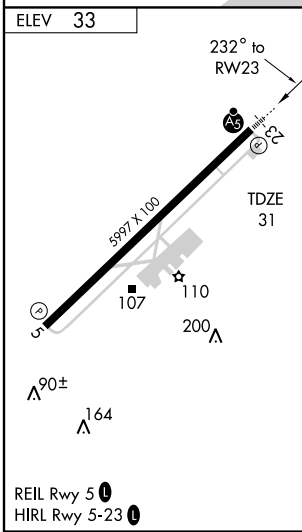
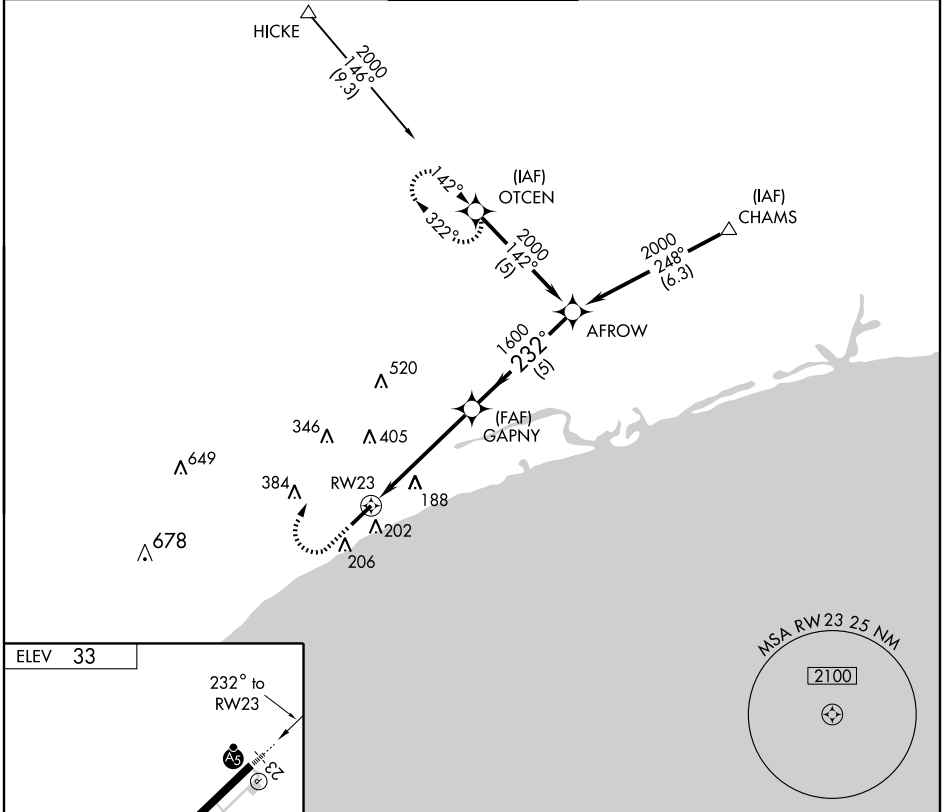
GPS RWY 23

NORTH MYRTLE BEACH/GRAND STRAND (C'RE)

APP CRS 232°	Rwy Idg 5997
	TDZE 31
	Apt Elev 33

NA For inoperative MALSR, increase S-23 Cat. A, B visibility to 1, and Cat. D visibility to 1 1/4.	MALSR	MISSED APPROACH: Climb to 1000 then climbing right turn to 2000 direct OTCEN WP and hold.

ATIS 119.625	MYRTLE BEACH APP CON* 119.2 350.3	STRAND TOWER* 124.6(CTAF) 0 257.6	GND CON 121.8 257.6	UNICOM 122.95
------------------------	---	---	-------------------------------	-------------------------



CATEGORY	A	B	C	D
S-23	440-3/4 409 (500-3/4)			440-1 409 (500-1)
CIRCLING	520-1	487 (500-1)	520-1 1/2 487 (500-1 1/2)	720-2 1/4 687 (700-2 1/4)

SE-2, 22 OCT 2009 to 19 NOV 2009

SE-2, 22 OCT 2009 to 19 NOV 2009