

FORT POLK, LOUISIANA

# NDB RWY 33

POLK AAF (KPOE)

NDB_GUV <b>359</b>	APCH CRS <b>336°</b>	Rwy Idg TDZE Arpt Elev <b>4109</b> <b>316</b> <b>330</b>
-----------------------	-------------------------	---

AL-5096 [USA]

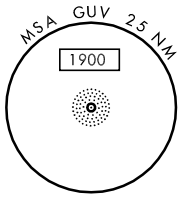
**CAUTION:** Pilots using this approach must acquaint themselves with any activities in R-3804A, B and R-3803A located 6.0 NM North of COCOS INT.



**MISSED APPROACH:** Climb to 2000 via GUV NDB brg 336° to COCOS INT and hold.

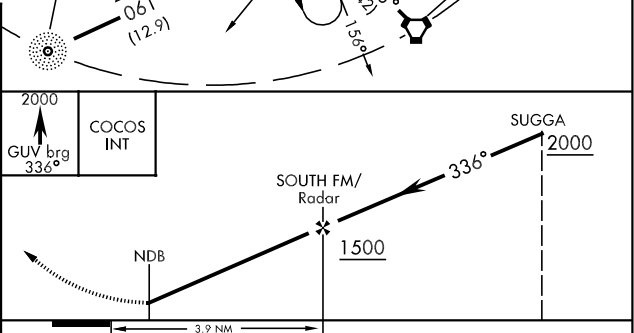
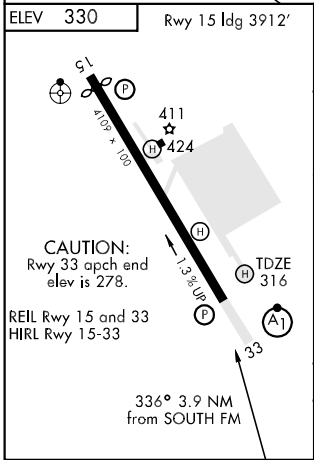
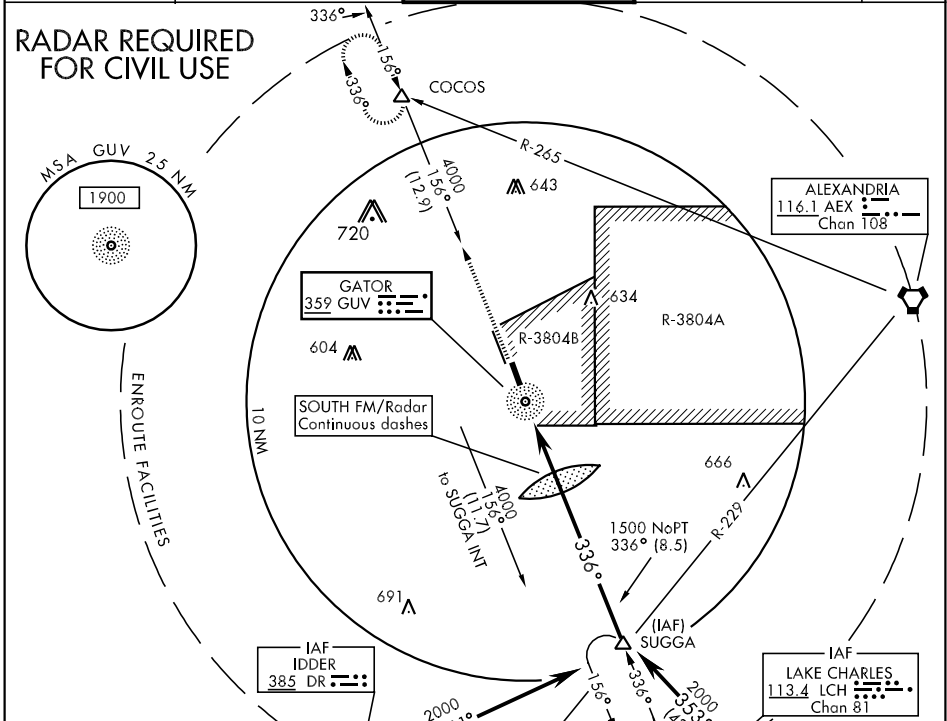
ATIS <b>134.85 234.3</b>	POLK APP CON <b>123.7 254.8</b>	POLK TOWER <b>119.0 257.75</b>	GND CON <b>121.8 239.25</b>	ASR/PAR
-----------------------------	------------------------------------	-----------------------------------	--------------------------------	---------

**RADAR REQUIRED FOR CIVIL USE**



SC-4, 22 OCT 2009 to 19 NOV 2009

SC-4, 22 OCT 2009 to 19 NOV 2009



CATEGORY	A	B	C	D
S-33	700-1	384 (400-1)		700-1½ 384(400-1½)
CIRCLING	820-1	490 (500-1)	820-1½ 490(500-1½)	880-2 550(600-2)
S-PAR 33	579-½	256 (300-½)	579-¾	256 (300-¾) GS 3.0°

FORT POLK, LOUISIANA  
Amdt 8 09071

31° 03'N-93° 11'W

POLK AAF (KPOE)

# NDB RWY 33