

NDB GUV 359	APCH CRS 156°	Rwy ldg TDZE Arpt Elev 3912 329 330
-----------------------	-------------------------	--

AL-5096 [USA]

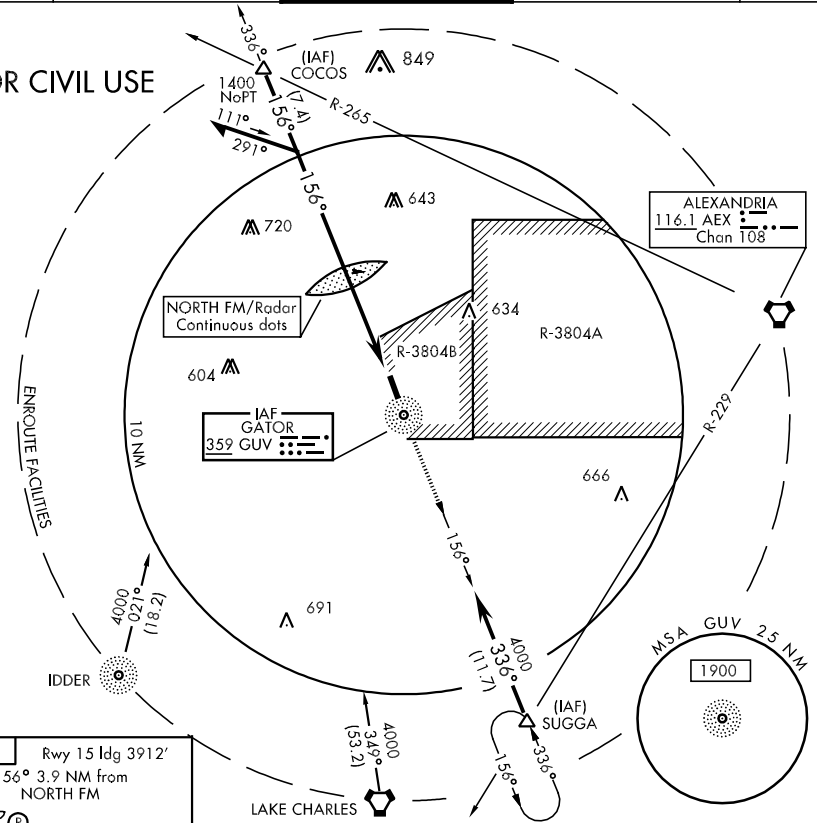
CAUTION: Pilots using this approach must acquaint themselves with any activities in R-3804A, B and R-3803A located 6.0 NM North of COCOS intersection. Procedure turn Fix to FAF exceeds 4 NM.



MISSED APPROACH: Climb to 2000 direct GUV NDB then via brg 156° to SUGGA INT and hold.

ATIS 134.85 234.3	POLK APP CON 123.7 254.8	POLK TOWER 119.0 257.75	GND CON 121.8 239.25	ASR/PAR
-----------------------------	------------------------------------	-----------------------------------	--------------------------------	---------

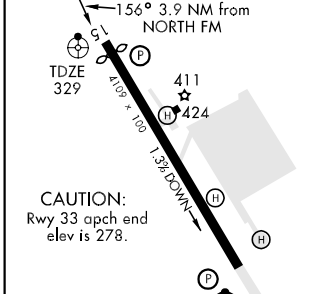
NOT FOR CIVIL USE



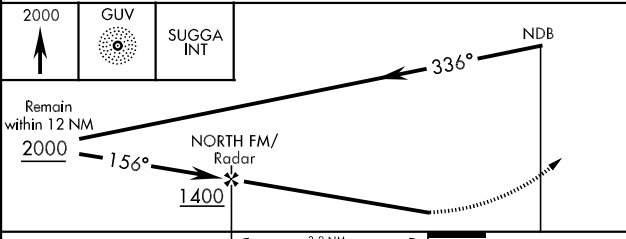
SC-4, 22 OCT 2009 to 19 NOV 2009

SC-4, 22 OCT 2009 to 19 NOV 2009

ELEV 330	Rwy 15 ldg 3912'
----------	------------------



REIL Rwy 15 and 33 HIRL Rwy 15-33					
FAF to MAP 3.9 NM					
Knots	60	90	120	150	180
Min:Sec	3:54	2:36	1:57	1:34	1:18



CATEGORY	A	B	C	D
S-15	820-¾ 491 (500-¾)		820-1 491(500-1)	820-1¼ 491(500-1¼)
CIRCLING	820-1	490 (500-1)	820-1½ 490(500-1½)	880-2 550(600-2)
S-PAR 15	529-¾ 200		(200-¾)	GS 3.0°