

# RNAV (GPS) RWY 8

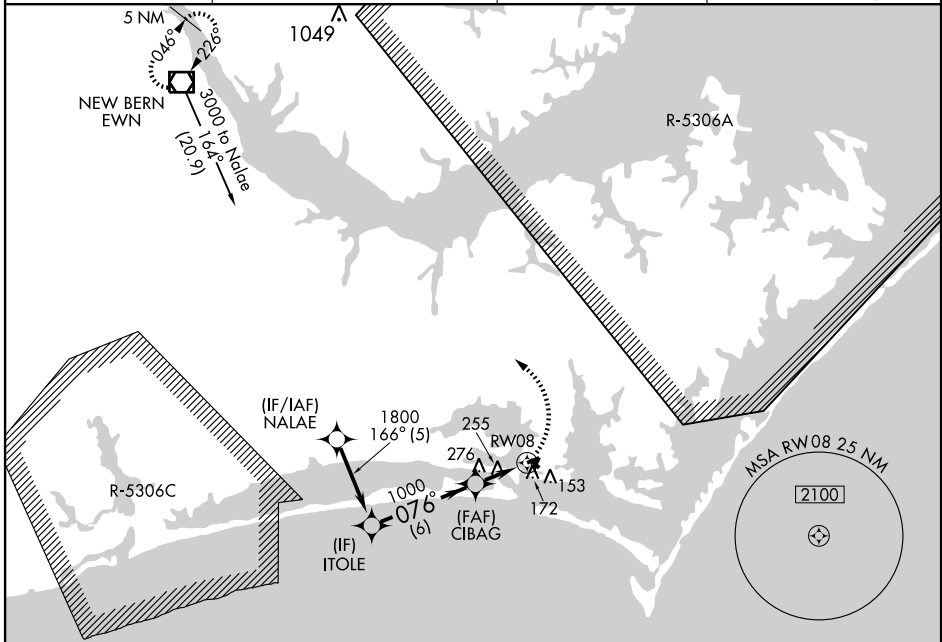
BEAUFORT/MICHAEL J. SMITH FIELD (MR.H)

APP CRS	Rwy ldg	<b>4249</b>
<b>076°</b>	TDZE	<b>10</b>
	Apt Elev	<b>11</b>

**NA** If local altimeter setting not received, use Cherry Point MCAS altimeter setting and increase all MDAs 40 feet. GPS or RNP-0.3 Required. DME/DME RNP-0.3 NA.  
 NOTE: ATC clearance required to penetrate R-5306A and R-5306C.  
 Straight-in minimums NA at night. Circling NA at night to Rwy's 3, 8 and 32.

**MISSED APPROACH:** Climbing left turn to 3000 direct EWN VOR/DME and hold.

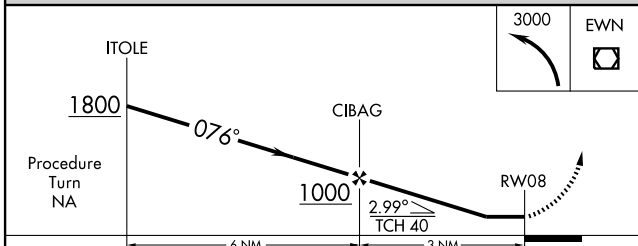
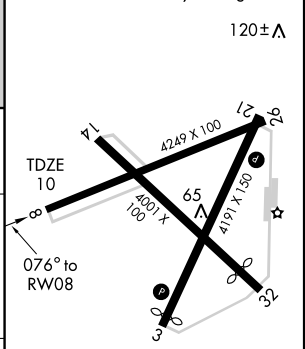
ASOS	MARINE CHERRY POINT APP CON	CHERRY POINT CLNC DEL	UNICOM
<b>135.375</b>	<b>124.1 268.7</b>	<b>125.65</b>	<b>122.8 (CTAF) 0</b>



SE-2, 22 OCT 2009 to 19 NOV 2009

SE-2, 22 OCT 2009 to 19 NOV 2009

ELEV 11	Rwy 3 ldg 4005'
	Rwy 32 ldg 3511'
	120±A



CATEGORY	A	B	C	D
LNVA MDA	540-1	532 (600-1)	540-1½ 532 (600-1½)	540-1¾ 532 (600-1¾)
CIRCLING	540-1	529 (600-1)	540-1½ 529 (600-1½)	580-2 569 (600-2)

REIL Rwy's 3 and 21  
 MRL Rwy's 3-21 and 8-26

# RNAV (GPS) RWY 8