

# RNAV (GPS) RWY 32

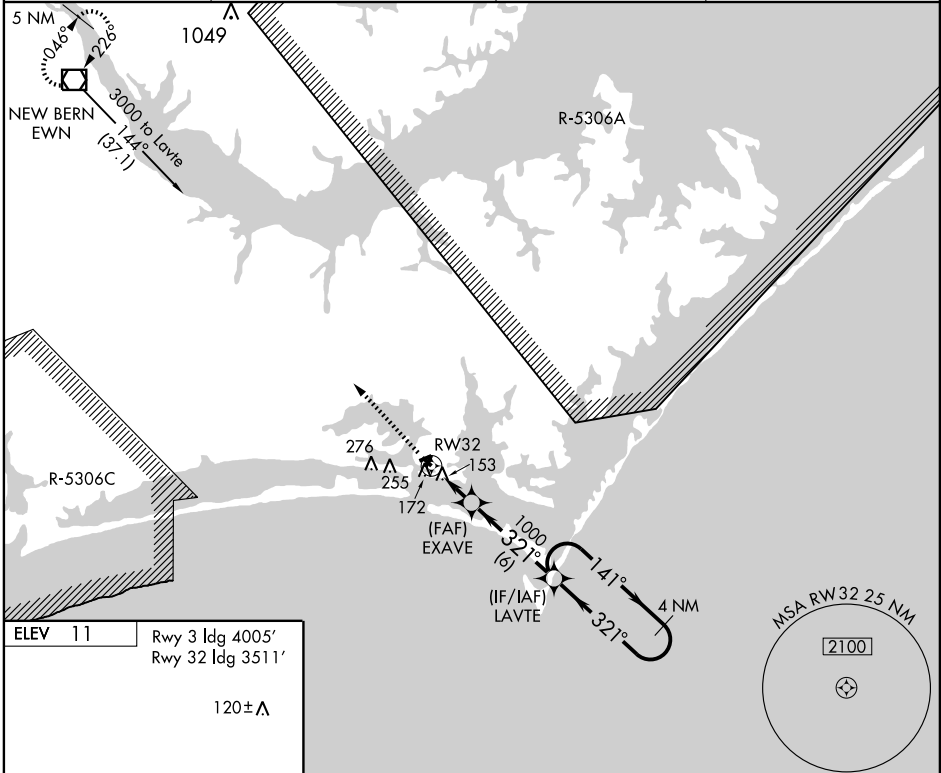
BEAUFORT/MICHAEL J. SMITH FIELD (MRH)

APP CRS	Rwy Idg	<b>3511</b>
<b>321°</b>	TDZE	<b>10</b>
	Apt Elev	<b>11</b>

If local altimeter setting not received, use Cherry Point MCAS altimeter setting and increase all MDAs 40 feet. GPS or RNP-0.3 Required. DME/DME RNP-0.3 NA.  
 NOTE: ATC clearance required to penetrate R-5306A and R-5306C.  
 Circling NA at night to Rwy 3, 8 and 32. VDP NA with Cherry Point MCAS altimeter setting. Straight-in minimums NA at night.

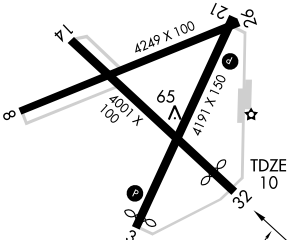
MISSED APPROACH: Climb to 3000 direct EWN VOR/DME and hold.

ASOS	MARINE CHERRY POINT APP CON	CHERRY POINT CLNC DEL	UNICOM
<b>135.375</b>	<b>124.1 268.7</b>	<b>125.65</b>	<b>122.8 (CTAF) 0</b>

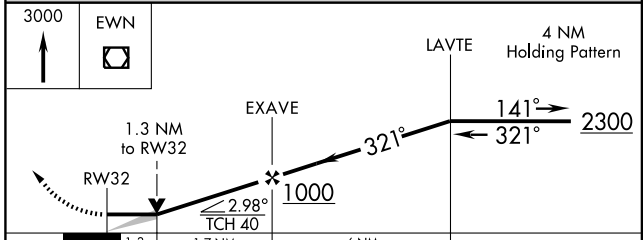


ELEV	11	Rwy 3 Idg	4005'
		Rwy 32 Idg	3511'

120±A



REIL Rwy 3 and 21  
 MIRL Rwy 3-21 and 8-26



CATEGORY	A	B	C	D
LNAV MDA	480-1 470 (500-1)		480-1¼ 470 (500-1¼)	480-1½ 470 (500-1½)
CIRCLING	540-1 529 (600-1)		540-1½ 529 (600-1½)	580-2 569 (600-2)

# RNAV (GPS) RWY 32

SE-2, 22 OCT 2009 to 19 NOV 2009

SE-2, 22 OCT 2009 to 19 NOV 2009