

RNAV (GPS) RWY 3

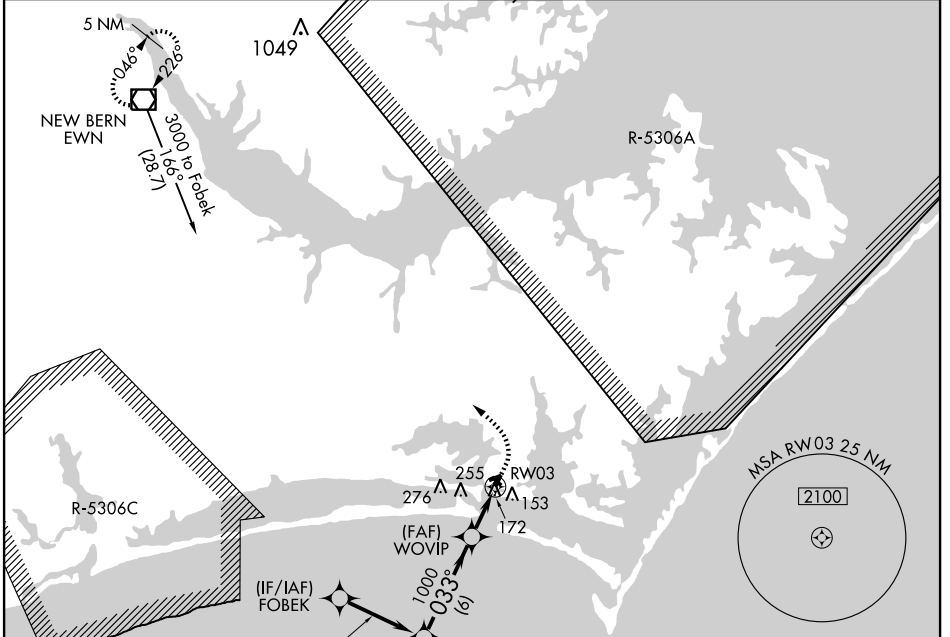
BEAUFORT/MICHAEL J. SMITH FIELD (MR.H)

APP CRS	Rwy Idg	4005
033°	TDZE	10
	Apt Elev	11

▽ If local altimeter setting not received, use Cherry Point MCAS altimeter setting and increase all MDAs 40 feet. GPS or RNP-0.3 Required. DME/DME RNP-0.3 NA.
△ NA NOTE: ATC clearance required to penetrate R-5306A and R-5306C.
 Straight-in minimums NA at night to Rwy 3, 8 and 32.

MISSED APPROACH: Climbing left turn to 3000 direct EWN VOR/DME and hold.

ASOS	MARINE CHERRY POINT APP CON	CHERRY POINT CLNC DEL	UNICOM
135.375	124.1 268.7	125.65	122.8 (CTAF) 0



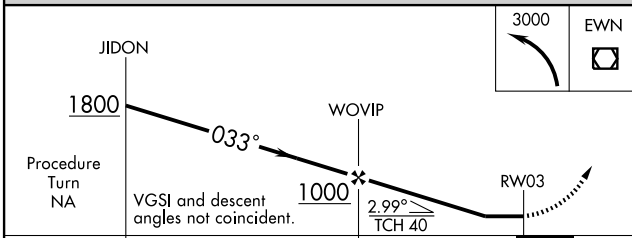
SE-2, 22 OCT 2009 to 19 NOV 2009

SE-2, 22 OCT 2009 to 19 NOV 2009

ELEV 11	Rwy 3 Idg 4005'
	Rwy 32 Idg 3511'
	120±△

033° to RWY 3

REIL Rwy 3 and 21
MRL Rwy 3-21 and 8-26



CATEGORY	A	B	C	D
RNAV MDA	480-1 470 (500-1)	480-1½ 470 (500-1¼)	480-1½ 470 (500-1½)	480-1½ 470 (500-1½)
CIRCLING	540-1 529 (600-1)	540-1½ 529 (600-1½)	540-1½ 529 (600-1½)	580-2 569 (600-2)