

RNAV (GPS) RWY 26

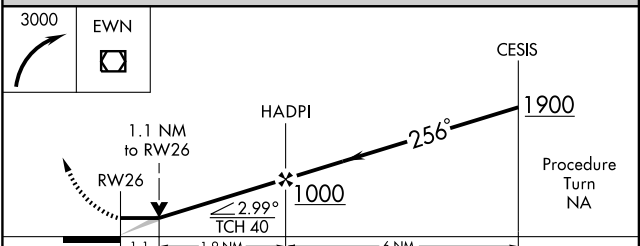
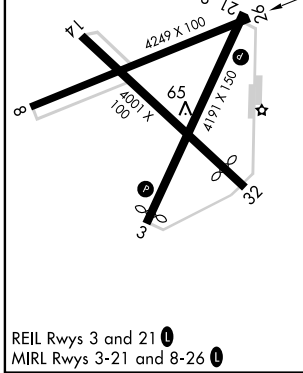
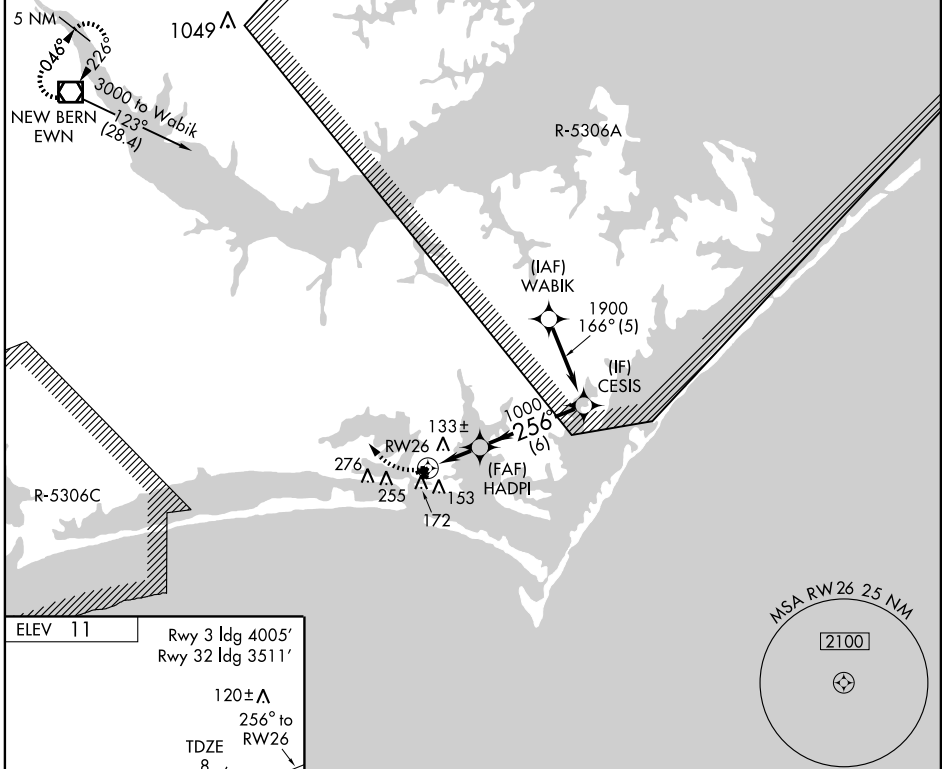
BEAUFORT/MICHAEL J. SMITH FIELD (MR.H)

APP CRS	Rwy ldg	4249
256°	TDZE	8
	Apt Elev	11

If local altimeter setting not received, use Cherry Point MCAS altimeter setting and increase all MDAs 40 feet. GPS or RNP-0.3 Required. DME/DME RNP-0.3 NA.
 NOTE: ATC clearance required to penetrate R-5306A and R-5306C.
 Circling NA at night to Rwy 3, 8 and 32. VDP NA with Cherry Point MCAS altimeter setting.

MISSED APPROACH: Climbing right turn to 3000 direct EWN VOR/DME and hold.

ASOS 135.375	MARINE CHERRY POINT APP CON 124.1 268.7	CHERRY POINT CLNC DEL 125.65	UNICOM 122.8 (CTAF)
------------------------	---	--	-------------------------------



CATEGORY	A	B	C	D
LNAV MDA	400-1	392 (400-1)		400-1¼ 392 (400-1¼)
CIRCLING	540-1	529 (600-1)	540-1½ 529 (600-1½)	580-2 569 (600-2)

SE-2, 22 OCT 2009 to 19 NOV 2009

SE-2, 22 OCT 2009 to 19 NOV 2009