

RNAV (GPS) RWY 21

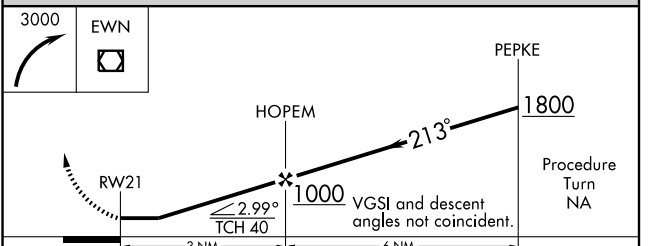
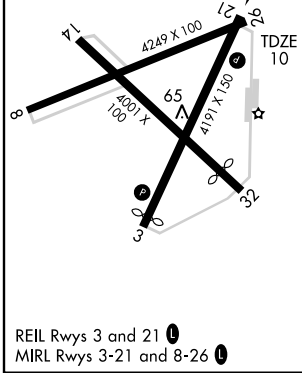
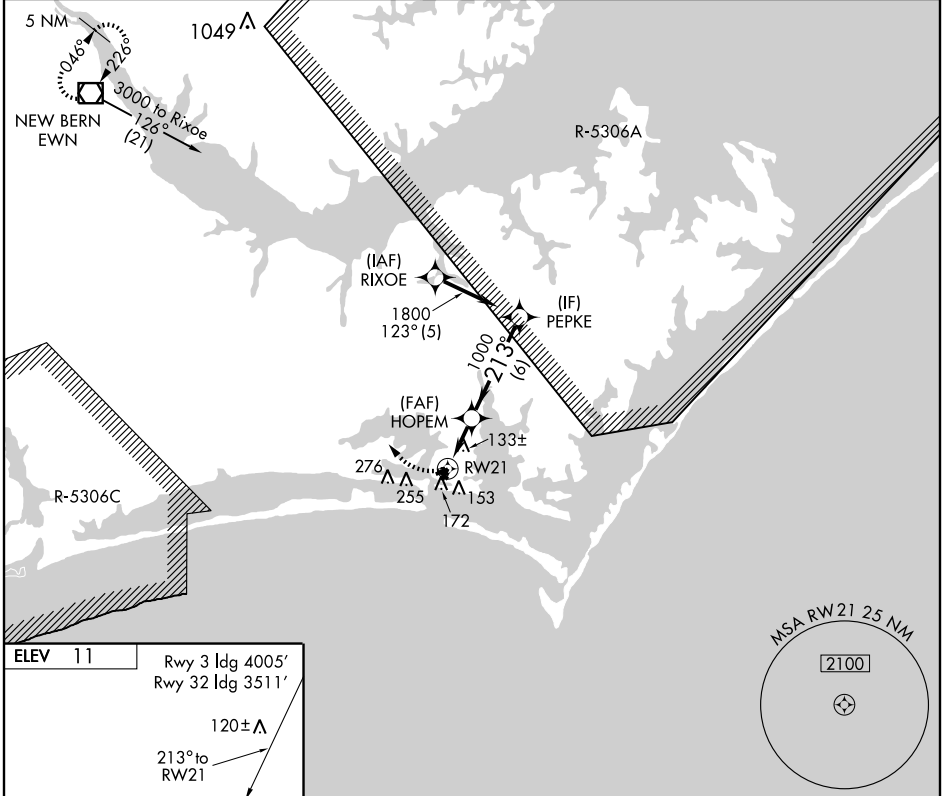
BEAUFORT/MICHAEL J. SMITH FIELD (MR.H)

APP CRS	Rwy ldg	4191
213°	TDZE	10
	Apt Elev	11

▼ If local altimeter setting not received, use Cherry Point MCAS altimeter setting and increase all MDAs 40 feet. GPS or RNP-0.3 Required. DME/DME RNP-0.3 NA.
▲ NA NOTE: ATC clearance required to penetrate R-5306A and R-5306C.
 Circling NA at night to Rwys 3, 8 and 32.

MISSED APPROACH: Climbing right turn to 3000 direct EWN VOR/DME and hold.

ASOS	MARINE CHERRY POINT APP CON	CHERRY POINT CLNC DEL	UNICOM
135.375	124.1 268.7	125.65	122.8 (CTAF) 0



CATEGORY	A	B	C	D
LNAV MDA	400-1	390 (400-1)		400-1 1/4 390 (400-1 1/4)
CIRCLING	540-1	529 (600-1)	540-1 1/2 529 (600-1 1/2)	580-2 569 (600-2)

RNAV (GPS) RWY 21

SE-2, 22 OCT 2009 to 19 NOV 2009

SE-2, 22 OCT 2009 to 19 NOV 2009