

NDB RWY 14

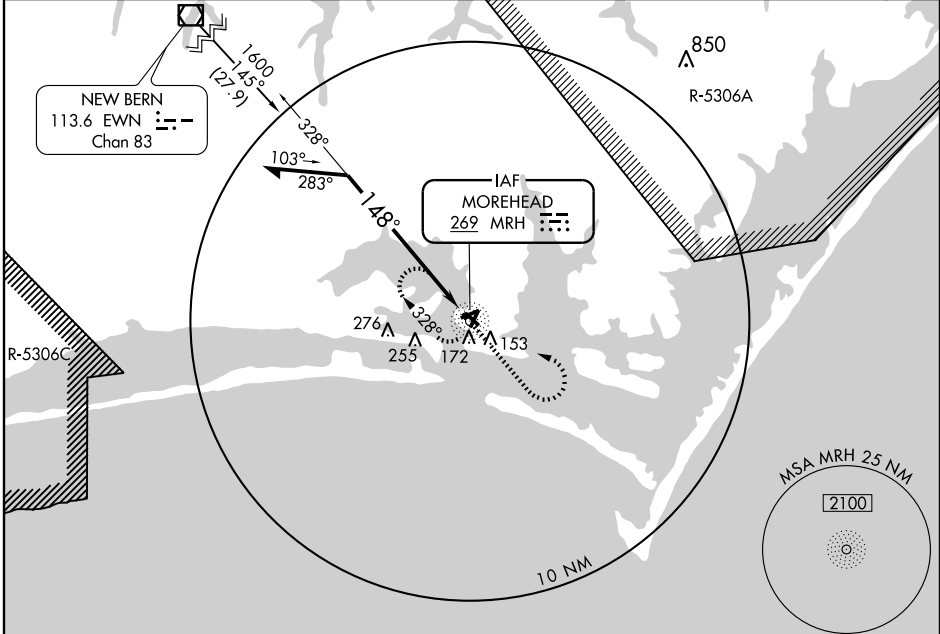
BEAUFORT/MICHAEL J. SMITH FIELD (MRH)

NDB	MRH	APP CRS	Rwy ldg	4001
269		148°	TDZE	10
			Apt Elev	11

▼ If local altimeter setting not received, use Cherry Point MCAS altimeter setting and increase all MDAs 40 feet.
▲ NA NOTE: ATC clearance required to penetrate R-5306A and R-5306C.

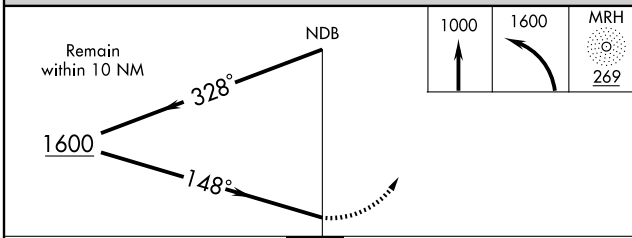
MISSED APPROACH: Climb to 1000 then climbing left turn to 1600 direct MRH NDB and hold.

ASOS	MARINE CHERRY POINT APP CON	CHERRY POINT CLNC DEL	UNICOM
135.375	124.1 268.7	125.65	122.8 (CTAF) 0



SE-2, 22 OCT 2009 to 19 NOV 2009

SE-2, 22 OCT 2009 to 19 NOV 2009



ELEV 11	Rwy 3 ldg 4005'	Rwy 32 ldg 3511'
	120 ± Δ	

Runway diagram details: Shows Rwy 3 and Rwy 21 intersecting at 4249 x 100. Rwy 32 intersects at 4191 x 150. Altitudes of 65, 100, and 150 are marked. A TDZE of 10 is shown. A 148-degree heading to MRH NDB is indicated. A 100 ft altitude is also shown.

REIL Rws 3 and 21		0
MRL Rws 3-21 and 8-26		0

Knots	60	90	120	150	180
Min:Sec					

CATEGORY	A	B	C	D
S-14	700-1 690 (700-1)		700-2 690 (700-2)	700-2 1/4 690 (700-2 1/4)
CIRCLING	700-1 689 (700-1)		700-2 689 (700-2)	700-2 1/4 689 (700-2 1/4)