

# WLSTN TWO DEPARTURE

SL-5094 (FAA)

MINNEAPOLIS/ FLYING CLOUD (FCM)  
MINNEAPOLIS, MINNESOTA

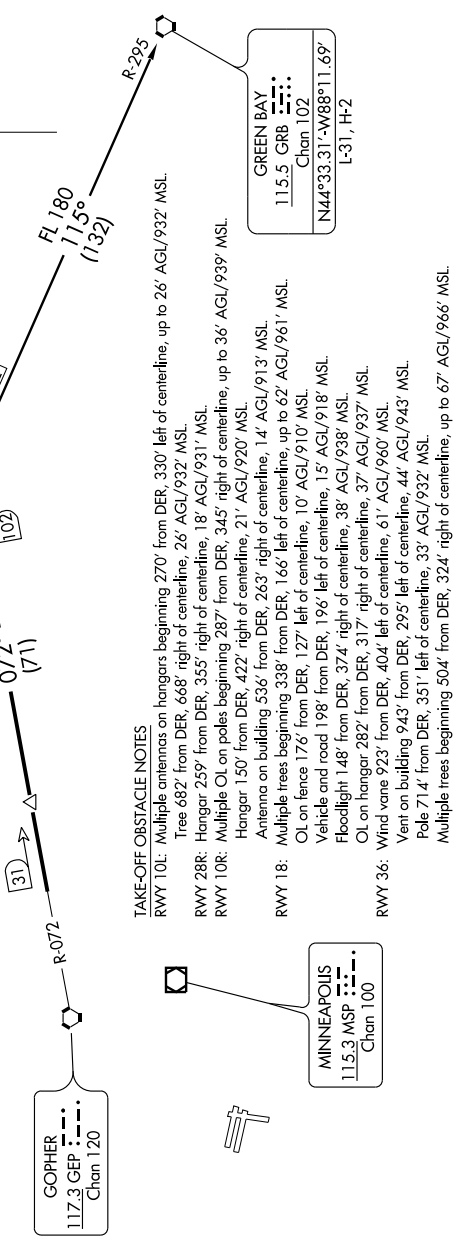
6000 V01-1-22 OCT 2009 to 61 NOV 2009

ATIS 124.9  
CLINC DEL  
121.7  
MINNEAPOLIS DEP CON  
134.7 357.4

GOPHER  
117.3 GEP  
Chan 120

SNINE  
N45°15.11'  
W92°39.05'

WLSTN  
N45°28.44'  
W91°00.92'



**TAKE-OFF OBSTACLE NOTES**

RWY 10L: Multiple antennas on hangars beginning 270' from DER, 330' left of centerline, up to 26' AGL/932' MSL. Tree 682' from DER, 668' right of centerline, 26' AGL/932' MSL.

RWY 28R: Hangar 259' from DER, 355' right of centerline, 18' AGL/931' MSL.

RWY 10R: Multiple OL on poles beginning 287' from DER, 345' right of centerline, up to 36' AGL/939' MSL. Hangar 150' from DER, 422' right of centerline, 21' AGL/920' MSL. Antenna on building 536' from DER, 263' right of centerline, 14' AGL/913' MSL. Multiple trees beginning 338' from DER, 166' left of centerline, up to 62' AGL/961' MSL.

RWY 18: OL on fence 176' from DER, 127' left of centerline, 10' AGL/910' MSL. Vehicle and road 198' from DER, 196' left of centerline, 15' AGL/918' MSL. Floodlight 148' from DER, 374' right of centerline, 38' AGL/938' MSL. OL on hangar 282' from DER, 317' right of centerline, 37' AGL/937' MSL.

RWY 36: Wind vane 923' from DER, 404' left of centerline, 61' AGL/960' MSL. Vent on building 943' from DER, 295' left of centerline, 44' AGL/943' MSL. Pole 714' from DER, 351' left of centerline, 33' AGL/932' MSL. Multiple trees beginning 504' from DER, 324' right of centerline, up to 67' AGL/966' MSL.

## DEPARTURE ROUTE DESCRIPTION

**TAKE-OFF ALL RUNWAYS:** Fly assigned heading and altitude for radar vectors to GEP R-072 to WLSTN/ GEP 102 DME, thence via transition or assigned route. Expect clearance to filed altitude/flight level 10 (ten) minutes after departure.

**GREEN BAY TRANSITION (WLSTN2.GRB):** From over WLSTN INT via GRB R-295 to GRB VORTAC.

**TAKE-OFF MINIMUMS**  
Rwy 10L, 28R, 10R, 28L, 18, 36: Standard.

**NOTE:** RADAR and DME required.  
**NOTE:** Chart not to scale.

NC-1, 22 OCT 2009 to 19 NOV 2009

# WLSTN TWO DEPARTURE