

VOR RWY 36

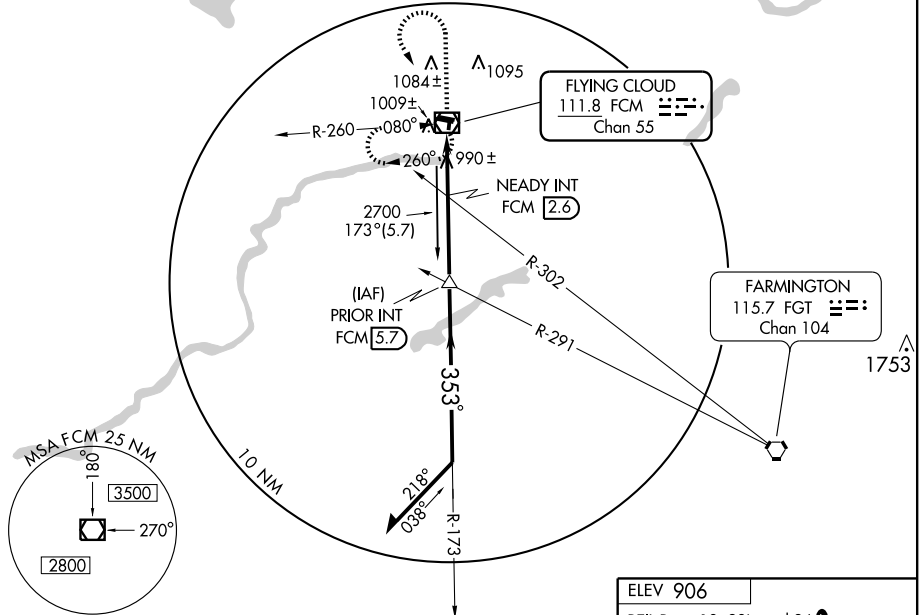
MINNEAPOLIS/ FLYING CLOUD (FCM)

VOR/DME FCM 111.8 Chan 55	APP CRS 353°	Rwy Idg TDZE Apt Elev	2691 905 906
--	------------------------	-----------------------------	---

MISSED APPROACH: Climb to 2500 then climbing left turn to 2700 direct FCM VOR/DME and hold.

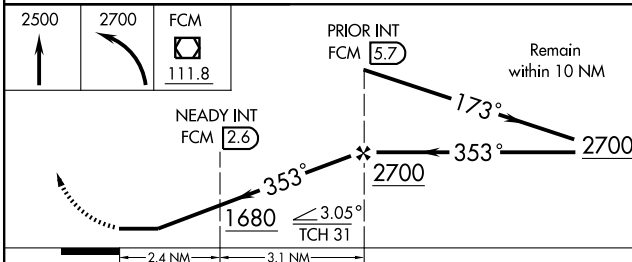
ATIS 124.9	MINNEAPOLIS APP CON 134.7 284.7	FLYING CLOUD TOWER * 118.1 (CTAF) 0	GND CON 121.7	CLNC DEL 121.7	MINNEAPOLIS CLNC DEL 121.7 (When tower closed)	UNICOM 122.95
----------------------	---	---	-------------------------	--------------------------	---	-------------------------

DME or RADAR REQUIRED



NC-1, 22 OCT 2009 to 19 NOV 2009

NC-1, 22 OCT 2009 to 19 NOV 2009



ELEV 906

REIL Rwy 18, 28L, and 36
MIRL Rwy 10L-28R and 18-36
HIRL Rwy 10R-28L

353° 5.5 NM from FAF

Knots	60	90	120	150	180
Min:Sec	5:30	3:40	2:45	2:12	1:50

CATEGORY	A	B	C	D
S-36	1680-1 775 (800-1)	1680-1¼ 775 (800-1¼)	1680-2¼ 775 (800-2¼)	NA
CIRCLING	1680-1 774 (800-1)	1680-1¼ 774 (800-1¼)	1680-2¼ 774 (800-2¼)	1680-2½ 774 (800-2½)
NEADY FIX MINIMUMS				
S-36	1260-1 355 (400-1)			NA
CIRCLING	1320-1 414 (500-1)	1360-1 454 (500-1)	1360-1½ 454 (500-1½)	1460-2 554 (600-2)