

(RST3.RST) 08269

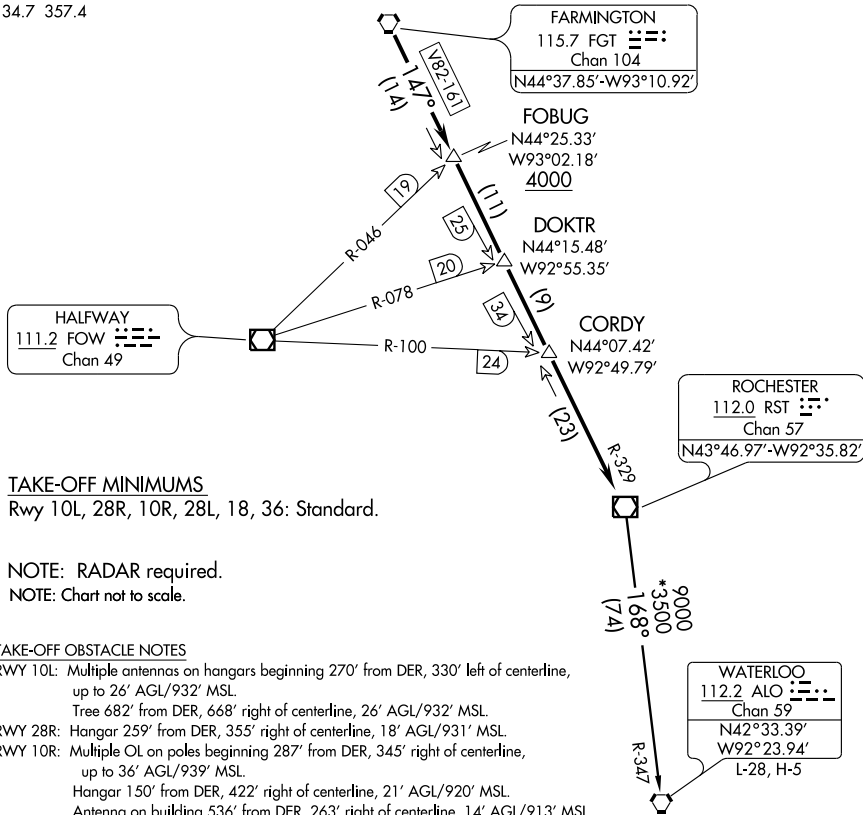
# ROCHESTER THREE DEPARTURE

MINNEAPOLIS/ FLYING CLOUD (FCM)

SL-5094 (FAA)

MINNEAPOLIS, MINNESOTA

ATIS 124.9  
CLNC DEL  
121.7  
MINNEAPOLIS DEP CON  
134.7 357.4



### TAKE-OFF MINIMUMS

Rwy 10L, 28R, 10R, 28L, 18, 36: Standard.

NOTE: RADAR required.

NOTE: Chart not to scale.

### TAKE-OFF OBSTACLE NOTES

**RWY 10L:** Multiple antennas on hangars beginning 270' from DER, 330' left of centerline, up to 26' AGL/932' MSL.

Tree 682' from DER, 668' right of centerline, 26' AGL/932' MSL.

**RWY 28R:** Hangar 259' from DER, 355' right of centerline, 18' AGL/931' MSL.

**RWY 10R:** Multiple OL on poles beginning 287' from DER, 345' right of centerline, up to 36' AGL/939' MSL.

Hangar 150' from DER, 422' right of centerline, 21' AGL/920' MSL.

Antenna on building 536' from DER, 263' right of centerline, 14' AGL/913' MSL.

**RWY 18:** Multiple trees beginning 338' from DER, 166' left of centerline, up to 62' AGL/961' MSL.

OL on fence 176' from DER, 127' left of centerline, 10' AGL/910' MSL.

Vehicle and road 198' from DER, 196' left of centerline, 15' AGL/918' MSL.

Floodlight 148' from DER, 374' right of centerline, 38' AGL/938' MSL.

OL on hangar 282' from DER, 317' right of centerline, 37' AGL/937' MSL.

**RWY 36:** Wind vane 923' from DER, 404' left of centerline, 61' AGL/960' MSL.

Vent on building 943' from DER, 295' left of centerline, 44' AGL/943' MSL.

Pole 714' from DER, 351' left of centerline, 33' AGL/932' MSL.

Multiple trees beginning 504' from DER, 324' right of centerline, up to 67' AGL/966' MSL.

### DEPARTURE ROUTE DESCRIPTION

**TAKE-OFF ALL RUNWAYS:** Fly assigned heading and altitude for radar vectors to FGT VORTAC then via FGT R-147 and RST R-329 to RST VOR/DME. Cross FOBUG INT/FGT 14 DME at or above 4000, thence via transition or assigned route. Expect clearance to filed altitude/flight level 10 (ten) minutes after departure.

**WATERLOO TRANSITION (RST3.ALO):** From over RST VOR/DME via RST R-168 and ALO R-347 to ALO VORTAC.

# ROCHESTER THREE DEPARTURE

(RST3.RST) 08269

MINNEAPOLIS, MINNESOTA

MINNEAPOLIS/ FLYING CLOUD (FCM)

NC-1, 22 OCT 2009 to 19 NOV 2009

NC-1, 22 OCT 2009 to 19 NOV 2009