

# RNAV (GPS) RWY 28R

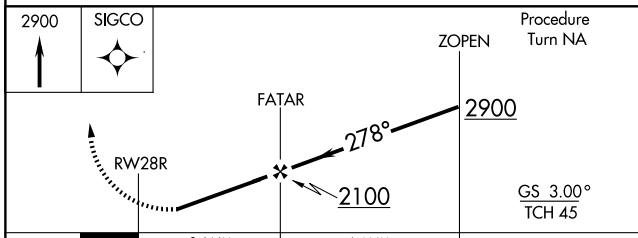
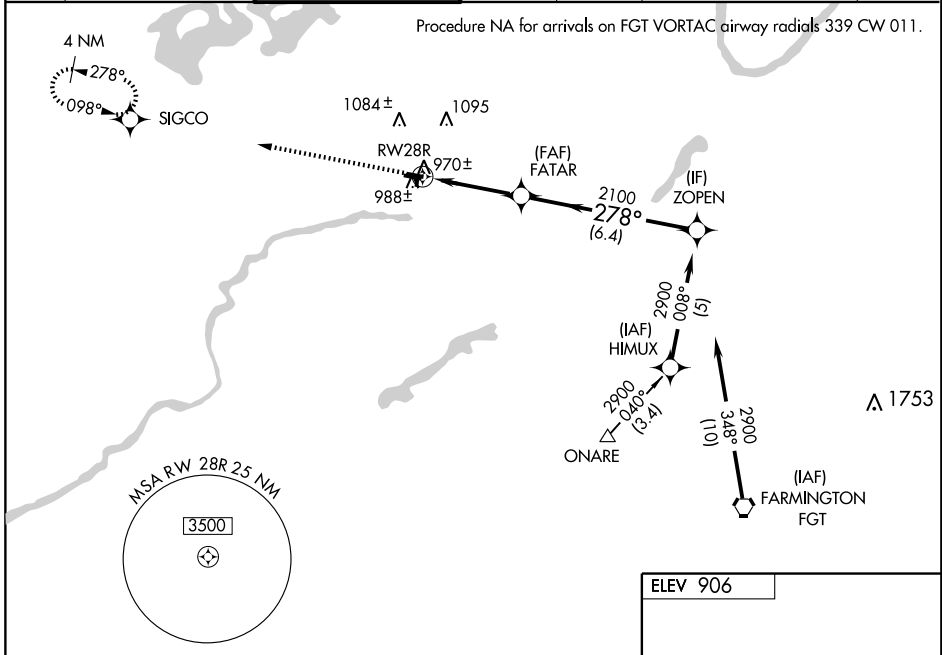
MINNEAPOLIS/FLYING CLOUD (FCM)

WAAS CH <b>99709</b> <b>W28A</b>	APP CRS <b>278°</b>	Rwy Idg TDZE <b>900</b> Apt Elev <b>906</b>
--	------------------------	---

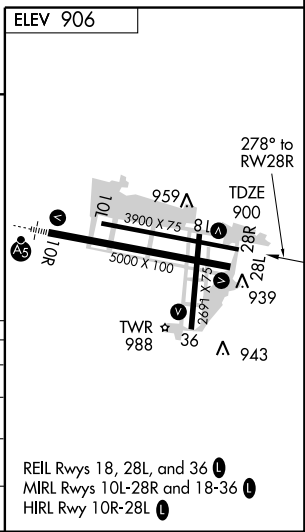
**⚠** DME/DME RNP -0.3 NA. Visibility reduction by helicopters NA. When local altimeter setting not received, use Minneapolis-St. Paul Intl/Wold Chamberlain altimeter setting and increase all DA 34 feet and all MDA 40 feet and LNAV Cat D visibility ¼ mile. Baro-VNAV NA when using Minneapolis-St Paul Intl/Wold Chamberlain altimeter setting. For uncompensated Baro-VNAV systems, LNAV/VNAV NA below -16° C (4°F) or above 46°C (114°F).

**MISSED APPROACH:** Climb to 2900 direct SIGCO and hold.

ATIS <b>124.9</b>	MINNEAPOLIS APP CON <b>134.7 284.7</b>	FLYING CLOUD TOWER * <b>118.1 (CTAF) 0</b>	GND CON <b>121.7</b>	CLNC DEL <b>121.7</b>	MINNEAPOLIS CLNC DEL <b>121.7</b> (When tower closed)	UNICOM <b>122.95</b>
----------------------	---	---	-------------------------	--------------------------	---	-------------------------



CATEGORY	A	B	C	D
LPV DA		1150-1	250 (300-1)	
LNAV/VNAV DA		1240-1½	340 (400-1½)	
LNAV MDA		1240-1	340 (400-1)	
CIRCLING	1300-1 394 (400-1)	1360-1 454 (500-1)	1360-1½ 454 (500-1½)	1460-2 554 (600-2)



NC-1, 22 OCT 2009 to 19 NOV 2009

NC-1, 22 OCT 2009 to 19 NOV 2009

REIL Rwy 18, 28L, and 36  
MIRL Rwy 10L-28R and 18-36  
HIRL Rwy 10R-28L