

RNAV (GPS) RWY 28L

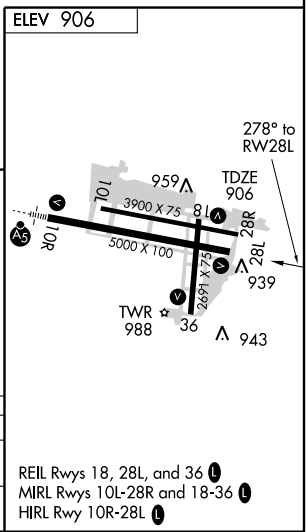
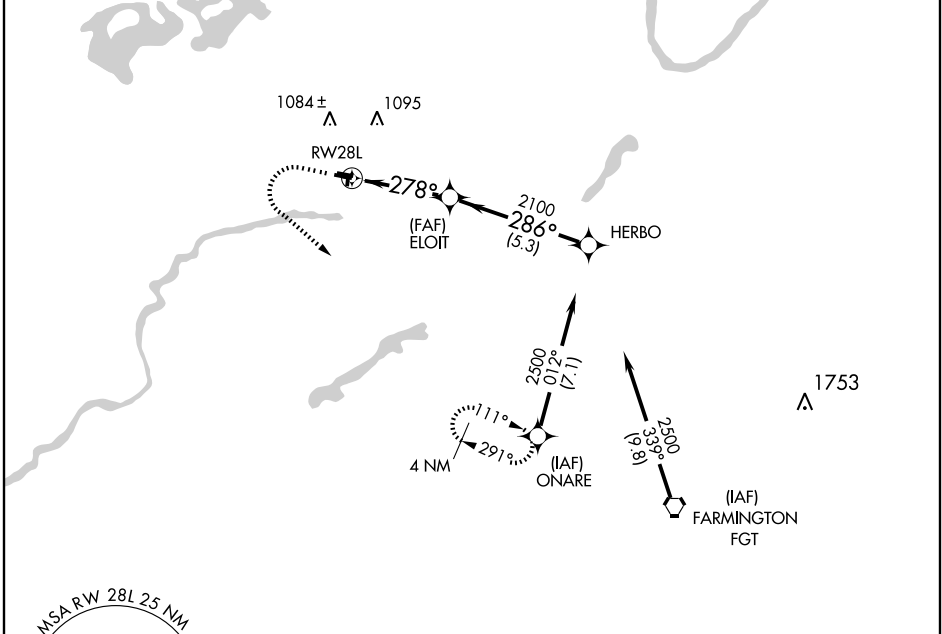
MINNEAPOLIS/FLYING CLOUD (FCM)

APP CRS 278°	Rwy Idg TDZE Apt Elev	5000 906 906
------------------------	-----------------------------	---

▽ GPS or RNP-0.3 required. DME/DME RNP-0.3 NA. **△** NA

MISSED APPROACH: Climb to 1500 then climbing left turn to 3000 direct ONARE WP and hold.

ATIS 124.9	MINNEAPOLIS APP CON 134.7 284.7	FLYING CLOUD TOWER * 118.1 (CTAF) 0	GND CON 121.7	CLNC DEL 121.7	MINNEAPOLIS CLNC DEL 121.7 (When tower closed)	UNICOM 122.95
----------------------	---	---	-------------------------	--------------------------	---	-------------------------



1500	3000	ONARE
HERBO		
ELOIT		2500
RW28L		2100
3.6 NM		5.3 NM
3.04° TCH 45		Procedure Turn NA

CATEGORY	A	B	C	D
LNVA MDA	1280-1	374 (400-1)		1280-1½ 374 (400-1¼)
CIRCLING	1320-1 414 (500-1)	1360-1 454 (500-1)	1360-1½ 454 (500-1½)	1460-2 554 (600-2)

REIL Rwy 18, 28L, and 36
MIRL Rwy 10L-28R and 18-36
HIRL Rwy 10R-28L

NC-1, 22 OCT 2009 to 19 NOV 2009

NC-1, 22 OCT 2009 to 19 NOV 2009