

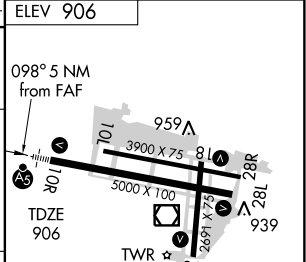
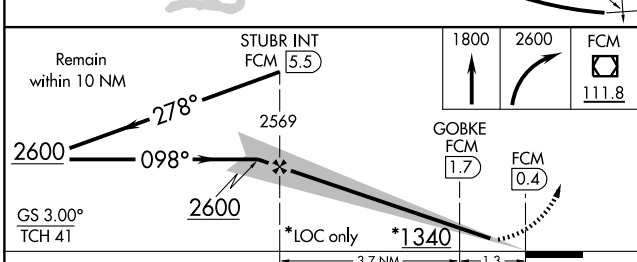
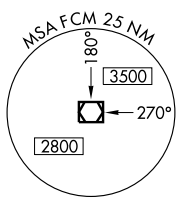
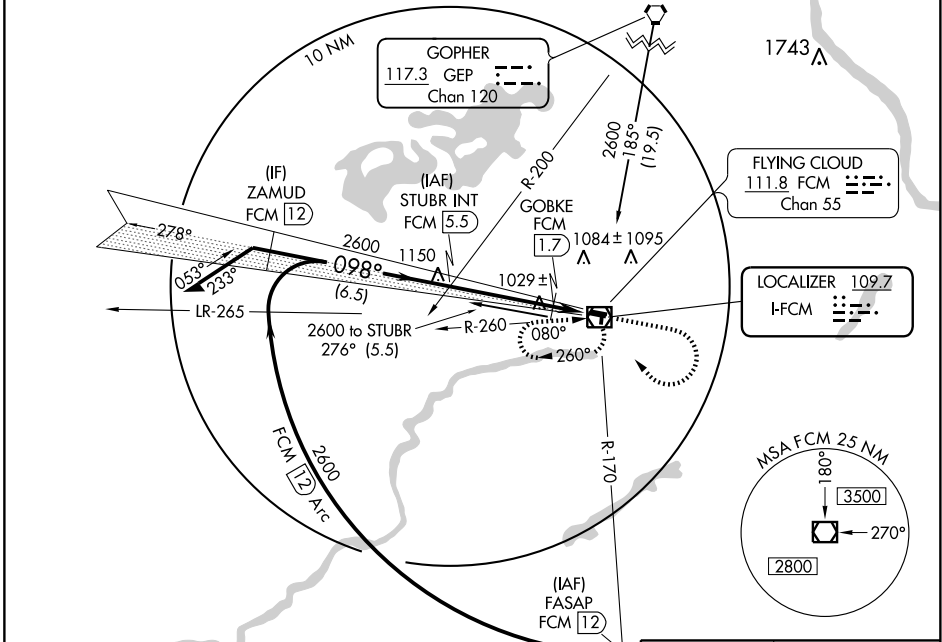
# ILS or LOC RWY 10R

MINNEAPOLIS/ FLYING CLOUD (FCM)

LOC I-FCM <b>109.7</b>	APP CRS <b>098°</b>	Rwy ldg TDZE Apt Elev <b>5000</b> <b>906</b> <b>906</b>
---------------------------	------------------------	--

MALSR MISSED APPROACH: Climb to 1800 then climbing right turn to 2600 direct FCM VOR/DME and hold.	
---	--

ATIS <b>124.9</b>	MINNEAPOLIS APP CON <b>134.7 284.7</b>	FLYING CLOUD TOWER ★ <b>118.1(CTAF)</b>	GND CON <b>121.7</b>	CLNC DEL <b>121.7</b>	MINNEAPOLIS CLNC DEL <b>121.7</b> (When tower closed)	UNICOM <b>122.95</b>
----------------------	---	--	-------------------------	--------------------------	---	-------------------------



CATEGORY	A	B	C	D
S-ILS 10R	1106-½ 200 (200-½)			
S-LOC 10R	1340-½	434 (500-½)	1340-¾	1340-1
CIRCLING	1340-1	1360-1	1360-1½	1460-2
DME MINIMUMS				
S-LOC 10R	1280-½ 374 (400-½)		1280-¾	
CIRCLING	1320-1	1360-1	1360-1½	1460-2

REIL Rwy 18, 28L, and 36

MIRL Rwy 10L-28R and 18-36

HIRL Rwy 10R-28L

FAF to MAP 5 NM

Knots	60	90	120	150	180
Min:Sec	5:00	3:20	2:30	2:00	1:40

NC-1, 22 OCT 2009 to 19 NOV 2009

NC-1, 22 OCT 2009 to 19 NOV 2009