

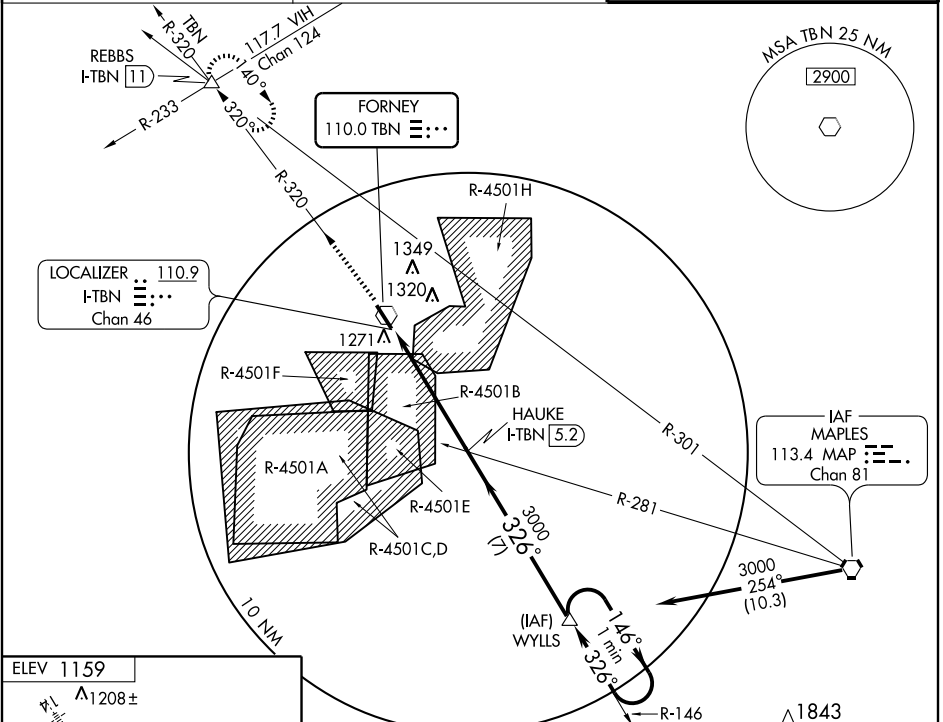
# VOR RWY 32

FT. LEONARD WOOD/  
WAYNESVILLE ST. ROBERT RGNL FORNEY FIELD (TBN)

VOR TBN <b>110.0</b>	APP CRS <b>326°</b>	Rwy Idg <b>5512</b>
		TDZE <b>1153</b>
		Apt Elev <b>1159</b>

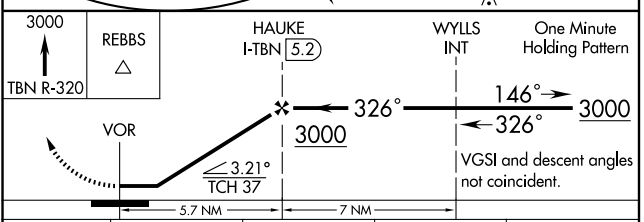
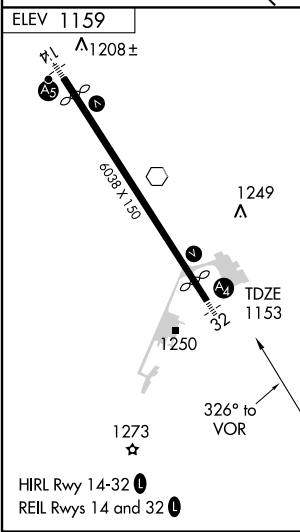
**▲** When control tower closed, use Rolla National altimeter setting. Procedure not authorized when R-4501B or R-4501H in use. **MALS** MISSED APPROACH: Climb to 3000 via TBN R-320 to REBBS Int and hold.

ATIS* <b>118.7 229.4</b>	KANSAS CITY CENTER <b>128.35 284.67</b>	FORNEY TOWER* <b>125.4 (CTAF) 268.7</b>
-----------------------------	--	--



NC-3, 22 OCT 2009 to 19 NOV 2009

NC-3, 22 OCT 2009 to 19 NOV 2009



CATEGORY	A	B	C	D
S-32	1580-1	427 (500-1)	1580-1¼ 427 (500-1¼)	1580-1½ 427 (500-1½)
CIRCLING	1580-1 421 (500-1)	1620-1 461 (500-1)	1660-1½ 501 (600-1½)	1720-2 561 (600-2)
ROLLA NATIONAL ALTIMETER SETTING				
S-32	1640-1	487 (500-1)	1640-1¼ 487 (500-1¼)	1640-1½ 487 (500-1½)
CIRCLING	1660-1	501 (600-1)	1720-1½ 561 (600-1½)	1720-2 561 (600-2)

# VOR RWY 32