

FT. LEONARD WOOD/  
WAYNESVILLE-ST. ROBERT RGNL FORNEY FIELD (T'BN)

# NDB/DME RWY 14

NDB BHN <b>391</b>	APP CRS <b>143°</b>	Rwy Idg <b>5537</b>
		TDZE <b>1158</b>
		Apt Elev <b>1159</b>

**NA** When Forney control tower closed, use Rolla National altimeter setting. Procedure not authorized when R-4501B or H in use. Simultaneous reception of I-TBN DME and BHN NDB required. Inoperative table does not apply.

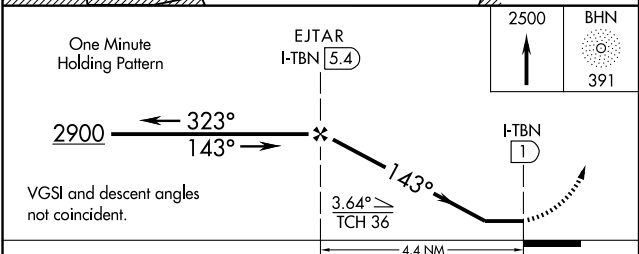
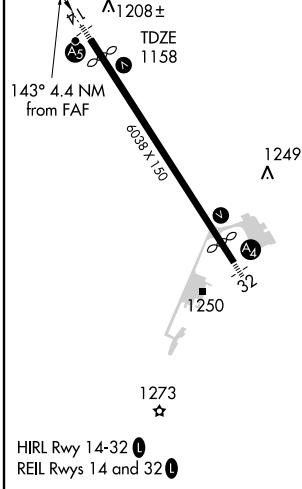
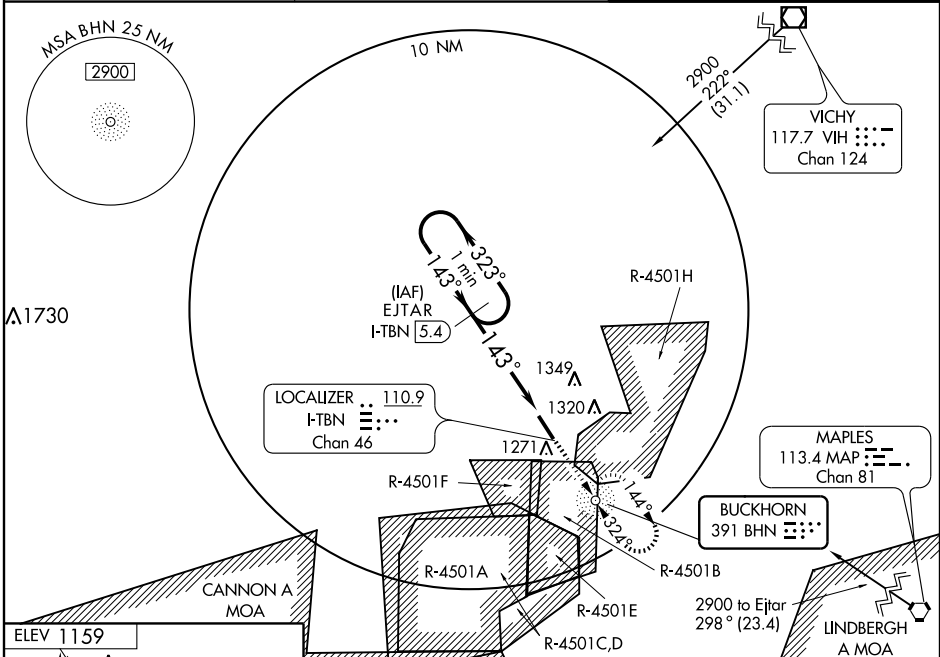
MALSR

MISSED APPROACH: Climb to 2500 direct BHN NDB and hold.

ATIS\*  
**118.7 229.4**

KANSAS CITY CENTER  
**128.35 284.67**

FORNEY TOWER\*  
**125.4 (CTAF) 268.7**



CATEGORY	A	B	C	D
S-14	1600-1	442 (500-1)	1600-1¼ 442 (500-1¼)	NA
CIRCLING	1600-1 441 (500-1)	1620-1 461 (500-1)	1660-1½ 501 (600-1½)	1720-2 561 (600-2)
ROLLA NATIONAL ALTIMETER SETTING				
S-14	1680-1	522 (600-1)	1680-1½ 522 (600-1½)	NA
CIRCLING	1680-1	521 (600-1)	1720-1½ 561 (600-1½)	1720-2 561 (600-2)

NC-3, 22 OCT 2009 to 19 NOV 2009

NC-3, 22 OCT 2009 to 19 NOV 2009