

# NDB RWY 32

FT. LEONARD WOOD/  
WAYNESVILLE-ST. ROBERT RGNL FORNEY FIELD (T'BN)

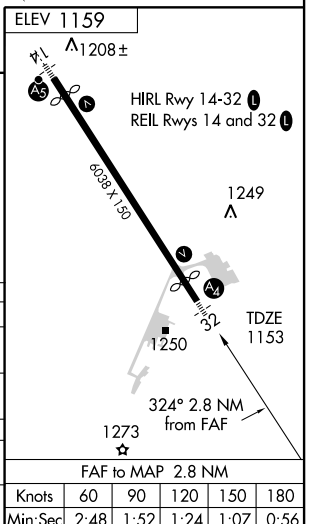
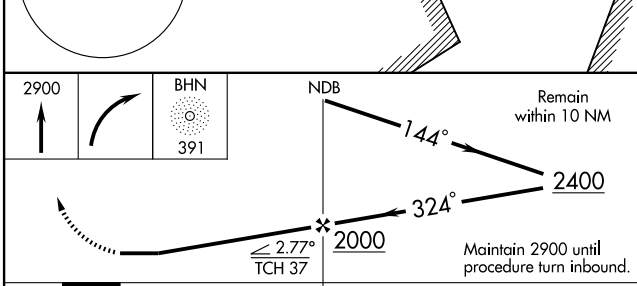
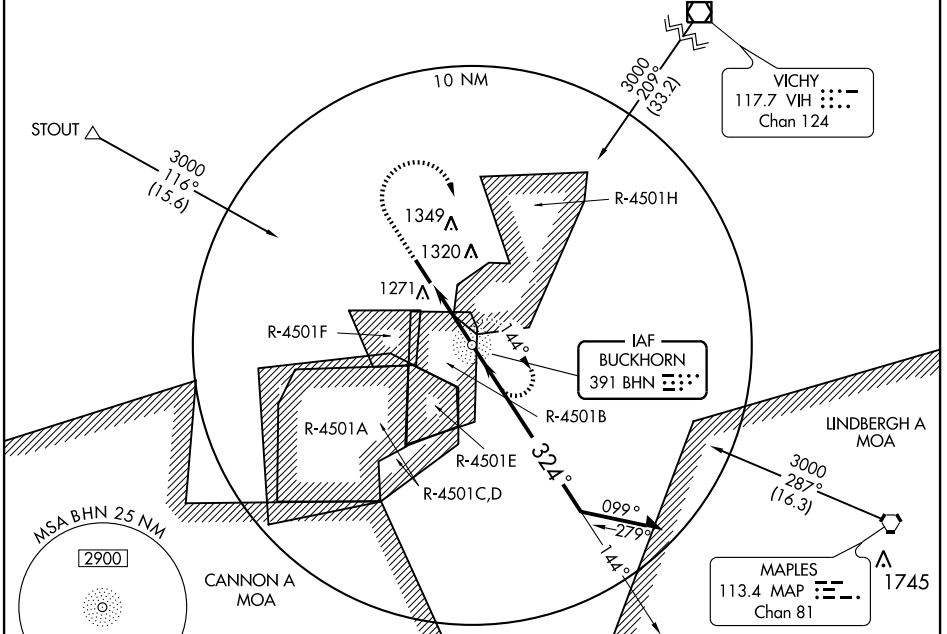
NDB BHN <b>391</b>	APP CRS <b>324°</b>	Rwy Idg TDZE Apt Elev	<b>5512</b> <b>1153</b> <b>1159</b>
-----------------------	------------------------	-----------------------------	---

**▲** When control tower closed, use Rolla National altimeter setting.  
Procedure not authorized when R-4501B or R-4501H in use.

MALS  


MISSED APPROACH: Climb to 2900 then right turn direct BHN NDB and hold.

ATIS* <b>118.7 229.4</b>	KANSAS CITY CENTER <b>128.35 284.67</b>	FORNEY TOWER* <b>125.4 (CTAF) 268.7</b>
-----------------------------	--	--



CATEGORY	A	B	C	D
S-32	1580-1	427 (500-1)	1580-1¼ 427 (500-1¼)	1580-1½ 427 (500-1½)
CIRCLING	1580-1 421 (500-1)	1620-1 461 (500-1)	1660-1½ 501 (600-1½)	1720-2 561 (600-2)
ROLLA NATIONAL ALTIMETER SETTING				
S-32	1660-1	507 (600-1)	1660-1½	507 (600-1½)
CIRCLING	1660-1	501 (600-1)	1720-1½ 561 (600-1½)	1720-2 561 (600-2)

FAF to MAP 2.8 NM	Knots	60	90	120	150	180
	Min:Sec	2:48	1:52	1:24	1:07	0:56

# NDB RWY 32

NC-3, 22 OCT 2009 to 19 NOV 2009

NC-3, 22 OCT 2009 to 19 NOV 2009