

LOC/DME I-TBN 110.9 Chan 46	APP CRS 144°	Rwy Idg 5537 TDZE 1158 Apt Elev 1159
--	------------------------	---

FT. LEONARD WOOD/
WAYNESVILLE-ST. ROBERT RGNL FORNEY FIELD (TBN)

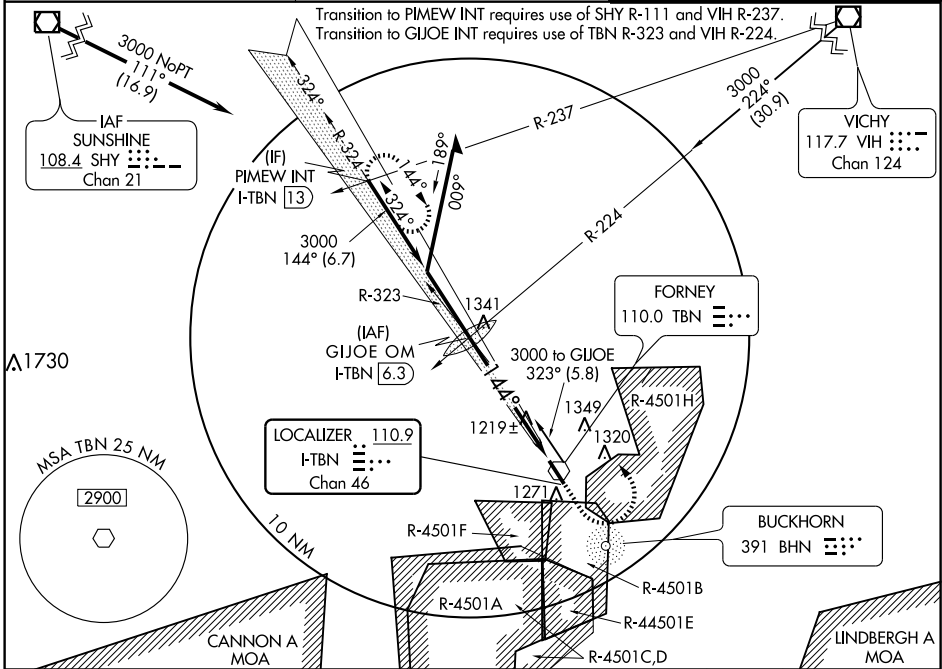
ILS or LOC RWY 14

▲ When local altimeter setting not received, use Rolla/Vichy altimeter setting. VDP NA when using Rolla/Vichy altimeter setting. For inoperative MALS/R, increase S-LOC-14 Cat. D visibility to 1 mile.



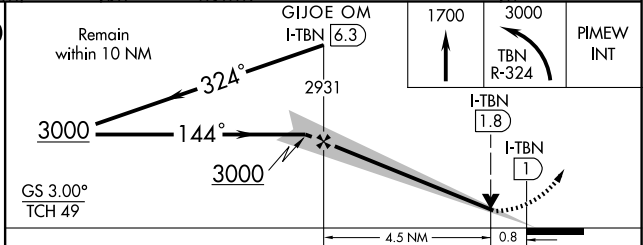
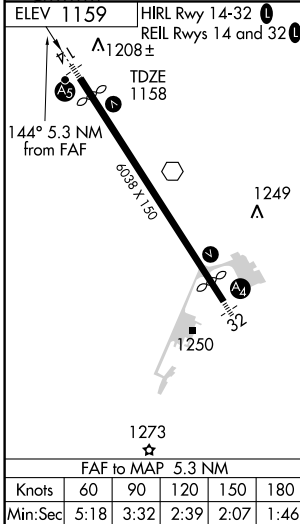
MISSED APPROACH: Climb to 1700 then climbing left turn to 3000 via TBN R-324 to PIMEW INT and hold.

ATIS* 118.7 229.4	KANSAS CITY CENTER 128.35 284.67	FORNEY TOWER* 125.4 (CTAF) 268.7
-----------------------------	--	--



NC-3, 22 OCT 2009 to 19 NOV 2009

NC-3, 22 OCT 2009 to 19 NOV 2009



CATEGORY	A	B	C	D
S-ILS 14	1358-1/2 200 (200-1/2)			
S-LOC 14	1480-1/2 322 (400-1/2)			1480-3/4 322 (400-3/4)
CIRCLING	1580-1 421 (500-1)	1620-1 461 (500-1)	1660-1 501 (600-1/2)	1720-2 561 (600-2)
	ROLLA/VICHY ALTIMETER SETTING MINIMUMS			
S-ILS 14	1427-1/2 269 (300-1/2)			
S-LOC 14	1540-1/2 382 (400-1/2)			1540-3/4 382 (400-3/4)
CIRCLING	1660-1 501 (600-1)		1720-1 561 (600-1/2)	1720-2 561 (600-2)

ILS or LOC RWY 14