


VOR/DME RWY 31

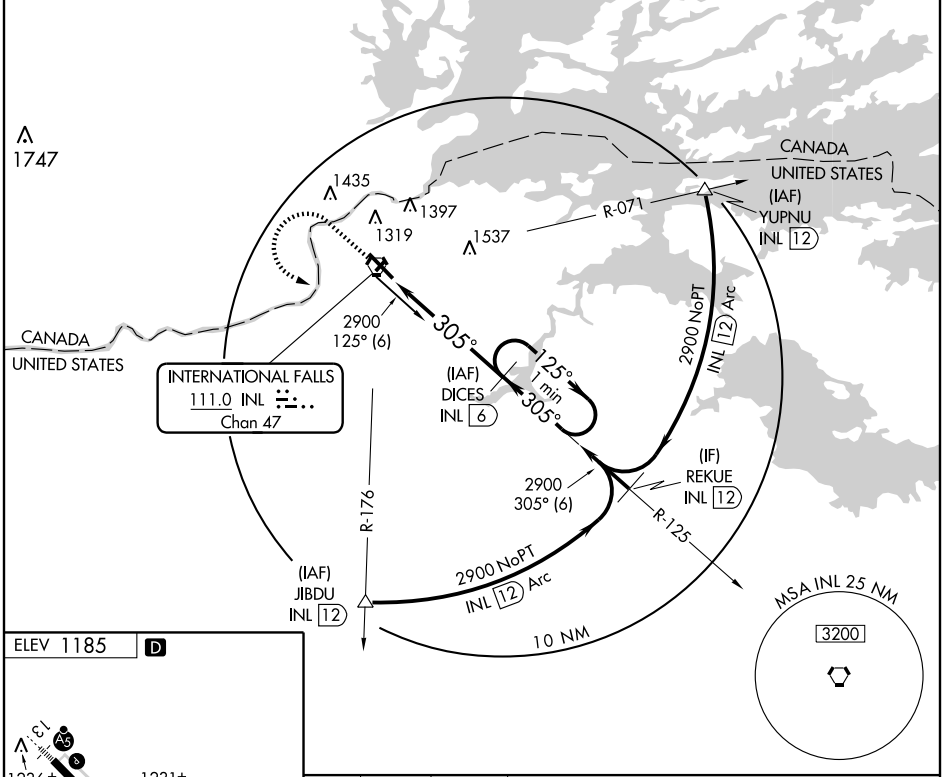
INTERNATIONAL FALLS/FALLS INTL (INL)

VORTAC INL 111.0 Chan 47	APP CRS 305°	Rwy Idg TDZE Apt Elev	7400 1166 1185
---------------------------------------	------------------------	-----------------------------	---

⚠ Circling to Rwy 4-22 NA at night.
⚠ When local altimeter setting not received, use Baudette altimeter setting and increase all MDAs 140 feet, increase S-31 Cat C and D visibility ¼ mile, and Circling Cat C and D visibility ¼ mile.

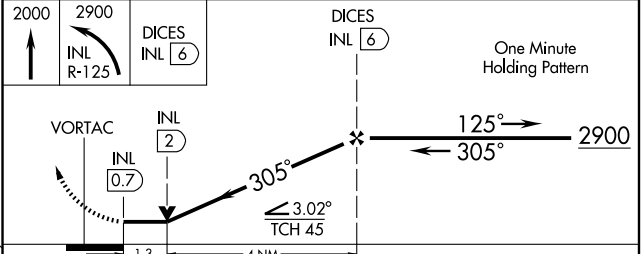
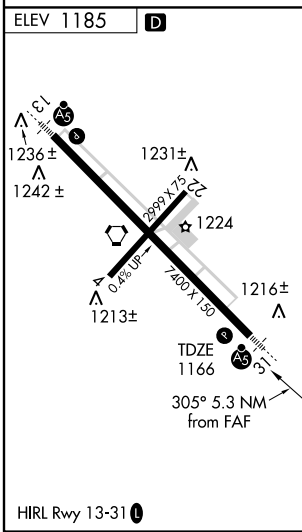
MALSR

MISSED APPROACH: Climb to 2000 then climbing left turn to 2900 via INL VORTAC R-125 to DICES/6 DME and hold.

ASOS 120.0	MINNEAPOLIS CENTER 120.9 377.1	UNICOM 122.8 (CTAF) 1
----------------------	--	---------------------------------



NC-1, 22 OCT 2009 to 19 NOV 2009

NC-1, 22 OCT 2009 to 19 NOV 2009



CATEGORY	A	B	C	D
S-31	1620-½	454 (500-½)	1620-¾ 454 (500-¾)	1620-1 454 (500-1)
CIRCLING	1620-1 435 (500-1)	1680-1 495 (500-1)	1680-1½ 495 (500-1½)	1780-2 595 (600-2)