


# VOR RWY 13

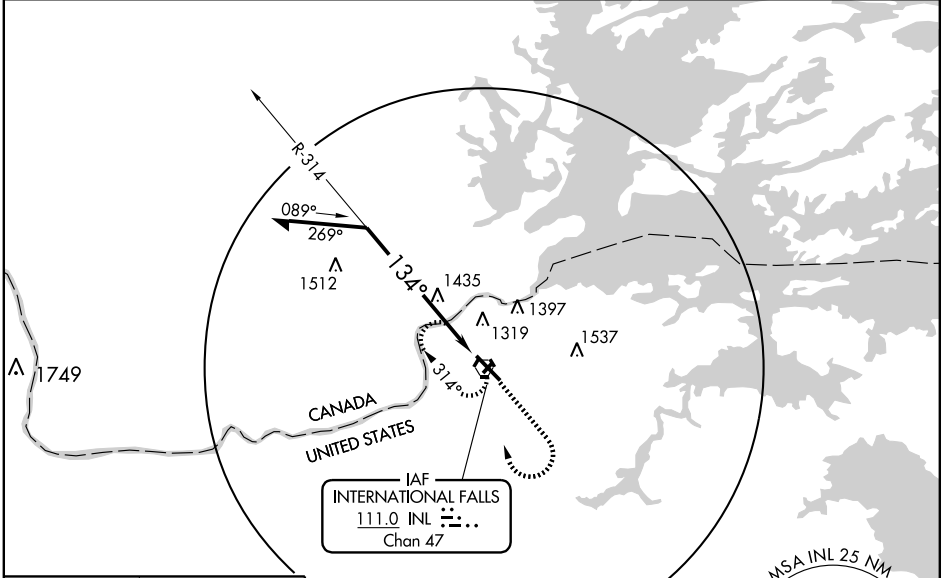
INTERNATIONAL FALLS/FALLS INTL (INL)

VORTAC INL <b>111.0</b> Chan <b>47</b>	APP CRS <b>134°</b>	Rwy Idg <b>7400</b> TDZE <b>1184</b> Apt Elev <b>1185</b>
--	------------------------	---

**⚠** Circling to Rwy 4-22 NA at night.  
**⚠** VDP NA when using Baudette altimeter setting.  
 When local altimeter setting not received, use Baudette altimeter setting and increase all MDAs 140 feet, and S-13 Cats A/B visibility ¼ mile, Cats C/D visibility ½ mile. Increase Circling Cat B visibility ¼ mile, Cat C and D ½ mile. For inoperative MALSR when using Baudette altimeter setting, increase S-13 Cat A visibility ¼ mile.

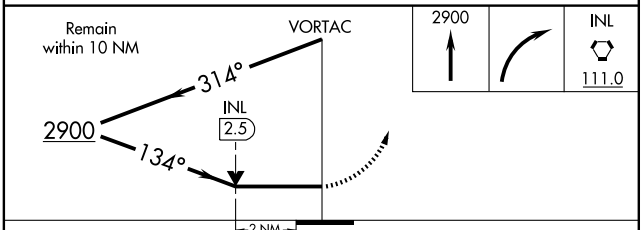
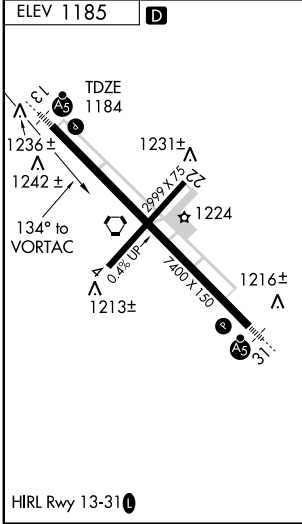
**MALSR**  
  
**MISSED APPROACH:** Climb to 2900 then right turn direct INL VORTAC and hold.

ASOS <b>120.0</b>	MINNEAPOLIS CENTER <b>120.9 377.1</b>	UNICOM <b>122.8 (CTAF) 0</b>
----------------------	--	---------------------------------



NC-1, 22 OCT 2009 to 19 NOV 2009

NC-1, 22 OCT 2009 to 19 NOV 2009



CATEGORY	A	B	C	D
S-13	1880-½ 696 (700-½)		1880-1½ 696 (700-1½)	1880-1¾ 696 (700-1¾)
CIRCLING	1880-1 695 (700-1)		1880-2 695 (700-2)	1880-2¼ 695 (700-2¼)