


# RNAV (GPS) RWY 31

INTERNATIONAL FALLS/FALLS INTL (INL)

|  |                        |   |
|--|------------------------|---|
| WAAS<br>CH <b>78406</b><br><b>W31A</b> | APP CRS<br><b>313°</b> | Rwy Idg<br>TDZE <b>1166</b><br>Apt Elev <b>1185</b> |
|--|------------------------|---|

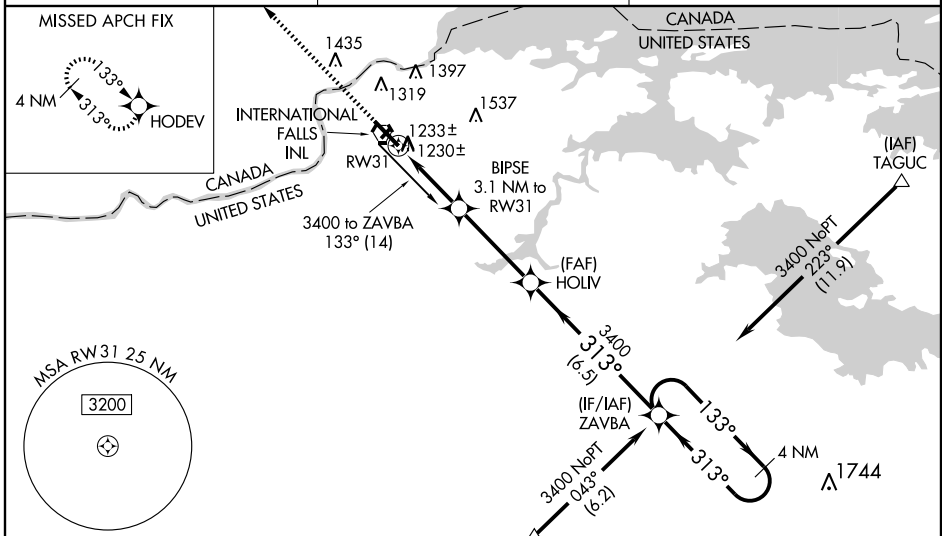
When local altimeter setting not received, use Baudette altimeter setting and increase all DAs 127 feet, and LPV and LNAV/VNAV visibility ½ mile all Cats, increase all MDAs for 140 feet and LNAV Cat C visibility ¼ mile and Circling Cat C and D visibility ¼ mile. For inoperative MALSR when using Baudette altimeter setting, increase LPV visibility ½ mile all Cats. For inoperative MALSR, increase LPV visibility ½ mile all Cats, inoperative table does not apply to LNAV Cat D. VDP NA when using Baudette altimeter setting. Baro-VNAV NA when using Baudette altimeter setting. Circling to Rwy 4-22 NA at night. For uncompensated Baro-VNAV systems, LNAV/VNAV NA below -17°C (2°F) or above 47°C (116°F). DME/DME RNP-0.3 NA.

**MALSR**



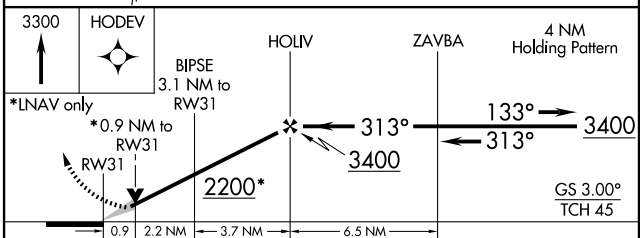
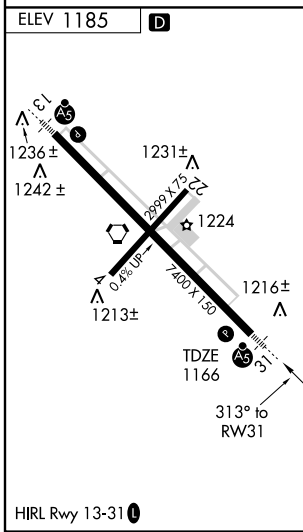
**MISSED APPROACH:**  
Climb to 3300 direct HODEV and hold.

|                      |  |                               |
|----------------------|--|-------------------------------|
| ASOS<br><b>120.0</b> | MINNEAPOLIS CENTER<br><b>120.9 377.1</b> | UNICOM<br><b>122.8 (CTAF)</b> |
|----------------------|--|-------------------------------|



NC-1, 22 OCT 2009 to 19 NOV 2009

NC-1, 22 OCT 2009 to 19 NOV 2009



| CATEGORY     | A                     | B                     | C                       | D                     |
|--------------|-----------------------|-----------------------|-------------------------|-----------------------|
| LPV DA       |                       | 1462-½                | 296 (300-½)             |                       |
| LNAV/VNAV DA |                       | 1500-¾                | 334 (400-¾)             |                       |
| LNAV MDA     |                       | 1500-½                | 334 (400-½)             | 1500-1<br>334 (400-1) |
| CIRCLING     | 1620-1<br>435 (500-1) | 1680-1<br>495 (500-1) | 1680-1½<br>495 (500-1½) | 1780-2<br>595 (600-2) |