

NDB RWY 31

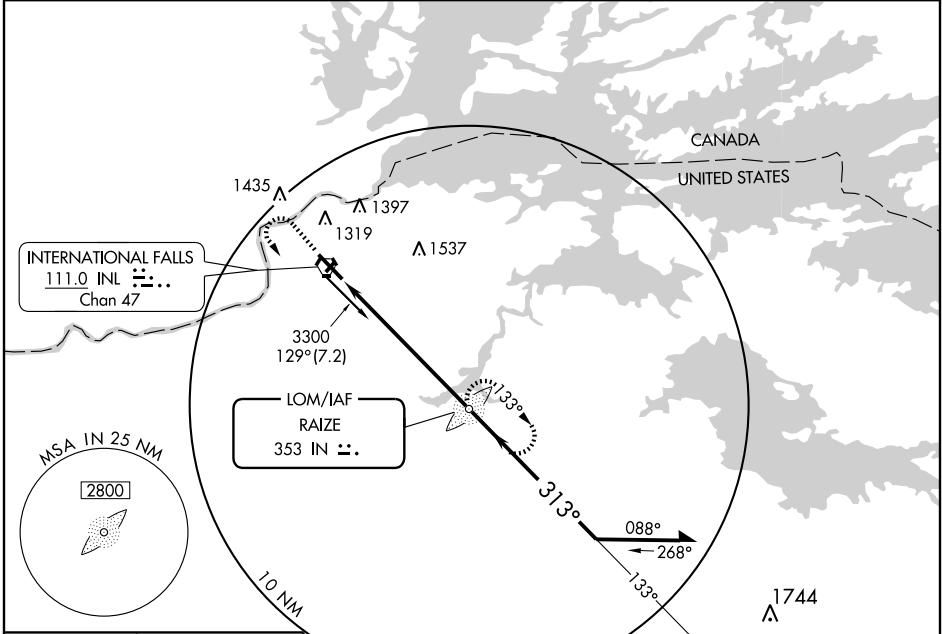
INTERNATIONAL FALLS/FALLS INTL (INL)

LOM IN 353	APP CRS 313°	Rwy Idg 7400
		TDZE 1166
		Apt Elev 1185

NA Circling to Rwy 4-22 NA at night.
When local altimeter setting not received, use Baudette altimeter setting and increase all MDAs 140 feet, and S-31 Cats C/D visibility ½ mile, Circling Cat C ½ mile, Cat D ¼ mile.

MALSR
AS
MISSED APPROACH: Climb to 2500 then climbing left turn to 3300 direct IN LOM and hold.

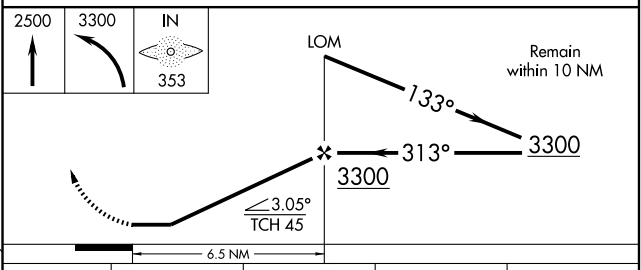
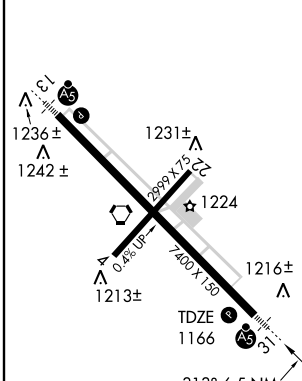
ASOS 120.0	MINNEAPOLIS CENTER 120.9 377.1	UNICOM 122.8 (CTAF) 0
----------------------	------------------------------------------	---------------------------------



NC-1, 22 OCT 2009 to 19 NOV 2009

NC-1, 22 OCT 2009 to 19 NOV 2009

ELEV 1185 **D**



CATEGORY	A		B		C		D	
	S-31	1700-¾	534 (600-¾)	1700-1	534 (600-1)	1700-1½	534 (600-1½)	1700-1½
CIRCLING	1700-1	515 (600-1)	1700-1½	515 (600-1½)	1780-2	595 (600-2)		