


ILS or LOC/DME RWY 13

INTERNATIONAL FALLS/FALLS INTL (INL)

LOC I-ABK 109.1	APP CRS 133°	Rwy Idg 7400	TDZE 1184
		Apt Elev 1185	

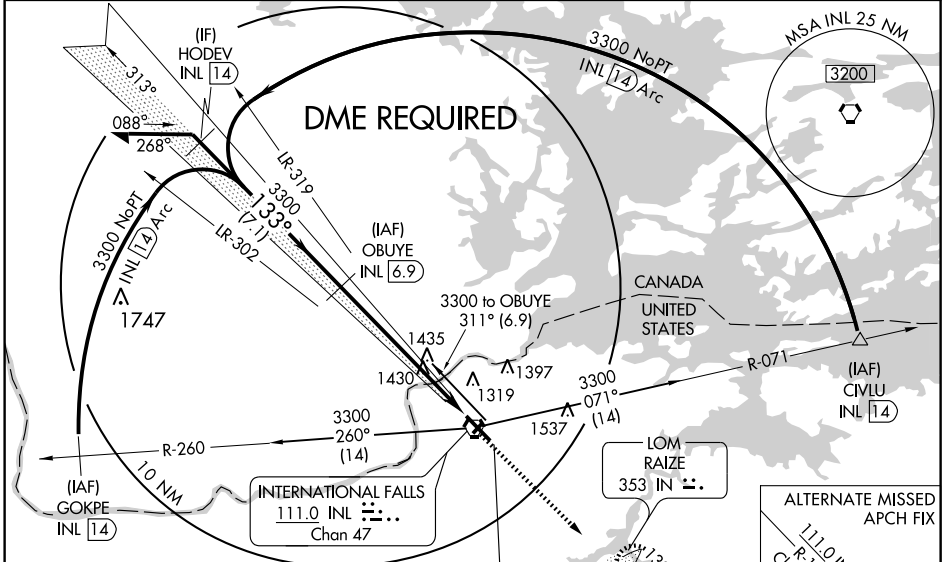
⚠ When local altimeter setting not received, use Baudette altimeter setting and increase DAs 127 feet and S-ILS 13 visibility ¼ mile all Cats, increase all MDAs 140 feet and S-LOC 13 Cat B visibility ¼ mile, Cat C and D ½ mile, increase Circling Cat B visibility ¼ mile, Cat C and D ½ mile.
⚠ For inoperative MALSRR when using Baudette altimeter setting, increase S-ILS 13 visibility ½ mile all Cats.
 ADF required. Circling to Rwy 4-22 NA at night.
 DME from INL VORTAC. Simultaneous reception of I-ABK and INL DME required.

MALSRR



MISSED APPROACH: Climb to 3400 direct IN LOM and hold.

ASOS 120.0	MINNEAPOLIS CENTER 120.9 377.1	UNICOM 122.8 (CTAF) 0
----------------------	--	---------------------------------



NC-1, 22 OCT 2009 to 19 NOV 2009

NC-1, 22 OCT 2009 to 19 NOV 2009

ELEV 1185 **D**

133° 6.4 NM from FAF

1236±

1242±

1231±

1224

1216±

1213±

0.5% GR

7400 X 150

TDZE 1184

35

31

LOCALIZER I-ABK 109.1

Remain within 10 NM

OBUYE INL 6.9

3300

313°

HODEV INL 14

3300

3300

3300

INL 0.5

3400 IN 353

GS 3.00° TCH 50

7.1 NM

6.4 NM

CATEGORY	A	B	C	D
S-ILS 13	1384-½ 200 (200-½)			
S-LOC 13	1820-½ 636 (700-½)	1820-1¼ 636 (700-1¼)	1820-1½ 636 (700-1½)	1820-1½ 636 (700-1½)
CIRCLING	1820-1 635 (700-1)	1820-1¾ 635 (700-1¾)	1820-2 635 (700-2)	1820-2 635 (700-2)