

# ILS or LOC RWY 31

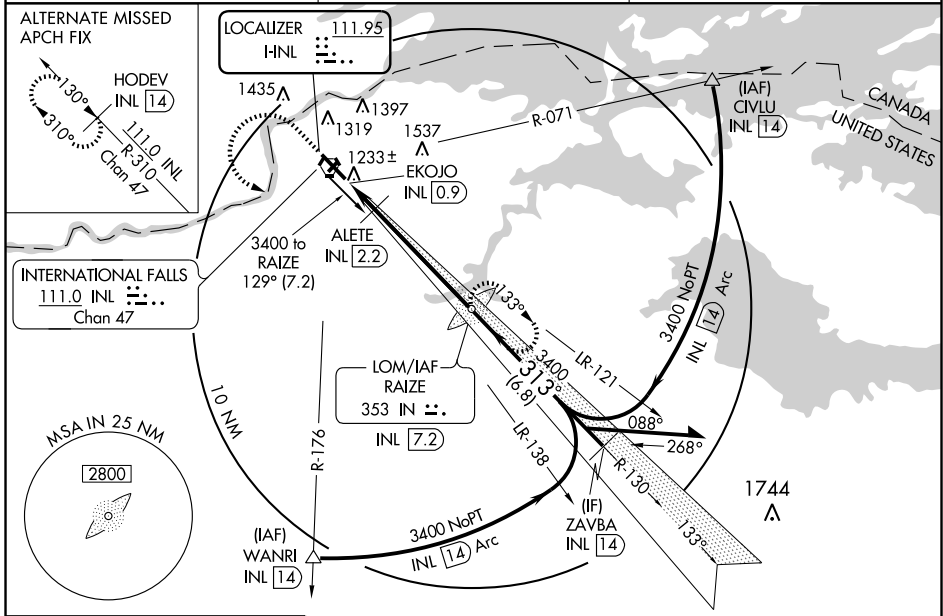
INTERNATIONAL FALLS/FALLS INTL (INL)

LOC I-INL <b>111.95</b>	APP CRS <b>313°</b>	Rwy Idg <b>7400</b> TDZE <b>1166</b> Apt Elev <b>1185</b>
----------------------------	------------------------	---

**⚠** Circling to Rwy 4-22 NA at night. ADF required. Autopilot coupled approach NA below 2250 feet. When local altimeter setting not received, use Baudette altimeter setting and increase DA 127 feet and S-ILS visibility ¼ mile all Cats, increase all MDA 140 feet and increase all Cat C/D visibility ¼ mile.

**MALSR**  
**AS**  
MISSED APPROACH: Climb to 2500 then climbing left turn to 3400 direct RAIZE LOM/INL VORTAC 7.2 DME and hold.

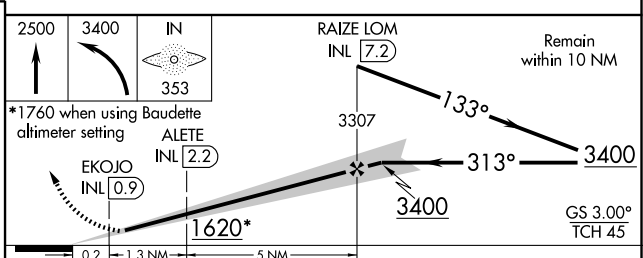
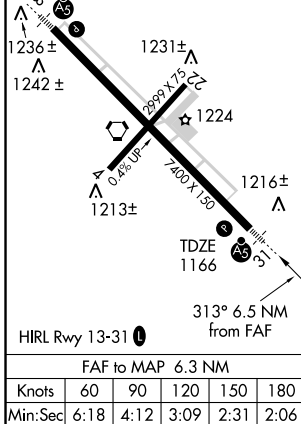
ASOS <b>120.0</b>	MINNEAPOLIS CENTER <b>120.9 377.1</b>	UNICOM <b>122.8 (CTAF)</b>
----------------------	--	-------------------------------



NC-1, 22 OCT 2009 to 19 NOV 2009

NC-1, 22 OCT 2009 to 19 NOV 2009

ELEV 1185	<b>D</b>
-----------	----------



CATEGORY	RAIZE LOM INL 7.2			
	A	B	C	D
S-ILS 31	1366-½ 200 (200-½)			
S-LOC 31	1620-½	454 (500-½)	1620-¾ 454 (500-¾)	1620-1 454 (500-1)
CIRCLING	1620-1 435 (500-1)	1680-1 495 (500-1)	1680-1½ 495 (500-1½)	1780-2 595 (600-2)
ALETE FIX MINIMUMS				
S-LOC 31	1520-½ 354 (400-½)			1520-¾ 354 (400-¾)
CIRCLING	1620-1 435 (500-1)	1680-1 495 (500-1)	1680-1½ 495 (500-1½)	1780-2 595 (600-2)