

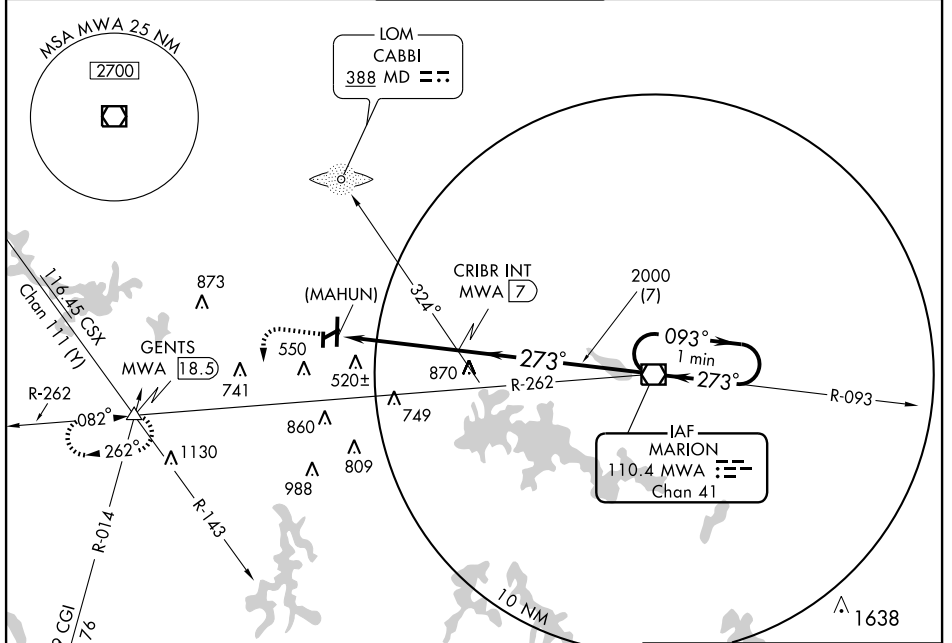
VOR or GPS-A

VOR/DME MWA 110.4 Chan 41	APP CRS 273°	Rwy Idg TDZE Apt Elev N/A N/A 411
---	------------------------	---

CARBONDALE-MURPHYSBORO/SOUTHERN ILLINOIS (MDH)

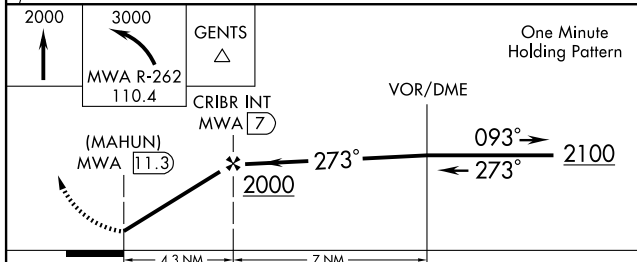
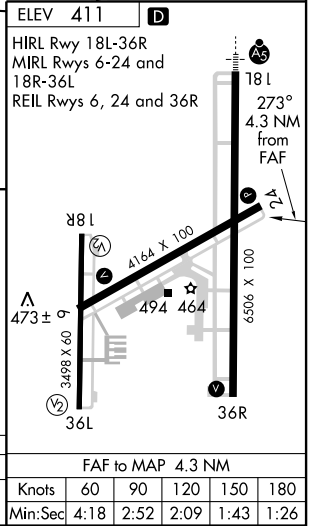
When control tower closed, prior arrangements required for MIRLS/REILs Rwy 6-24, MIRLS Rwy 18R-36L. MISSED APPROACH: Climb to 2000 then climbing left turn to 3000 via MWA R-262 to GENTS Int and hold.

ATIS 119.85	KANSAS CITY CENTER 125.3 269.5	CARBONDALE TOWER ★ 125.35 (CTAF) 0 322.4	GND CON 121.8	UNICOM 122.95
-----------------------	--	--	-------------------------	-------------------------



EC-3, 22 OCT 2009 to 19 NOV 2009

EC-3, 22 OCT 2009 to 19 NOV 2009



CATEGORY	A	B	C	D	FAF to MAP 4.3 NM					
CIRCLING	860-1 449 (500-1)	880-1 469 (500-1)	880-1½ 469 (500-1½)	980-2 569 (600-2)	Knots	60	90	120	150	180
					Min:Sec	4:18	2:52	2:09	1:43	1:26