

CARBONDALE-MURPHYSBORO, ILLINOIS

AL-5091 (FAA)

NDB or GPS RWY 18L

CARBONDALE-MURPHYSBORO/SOUTHERN ILLINOIS (MDH)

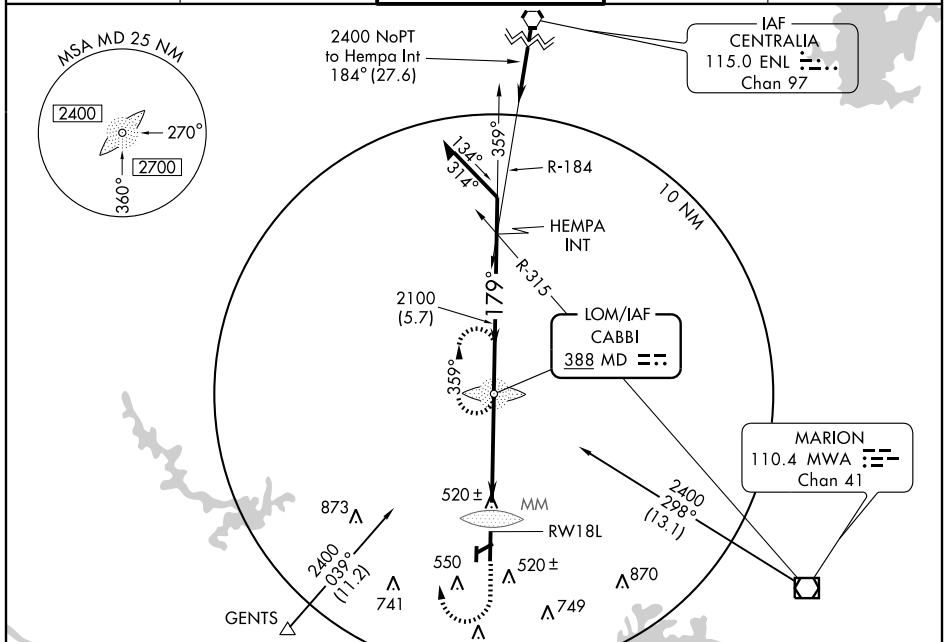
LOM MD 388	APP CRS 179°	Rwy Idg 6506
		TDZE 407
		Apt Elev 411

A When control tower closed, prior arrangements required for MIRLS/REILs Rwy 6-24, MIRLS Rwy 18R-36L



MISSED APPROACH: Climb to 2100 then right turn direct MD LOM and hold.

ATIS 119.85	KANSAS CITY CENTER 125.3 269.5	CARBONDALE TOWER ★ 125.35 (CTAF) 0 322.4	GND CON 121.8	UNICOM 122.95
-----------------------	--	--	-------------------------	-------------------------



EC-3, 22 OCT 2009 to 19 NOV 2009

EC-3, 22 OCT 2009 to 19 NOV 2009

ELEV 411 **D**

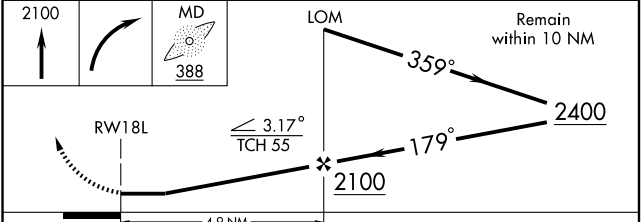
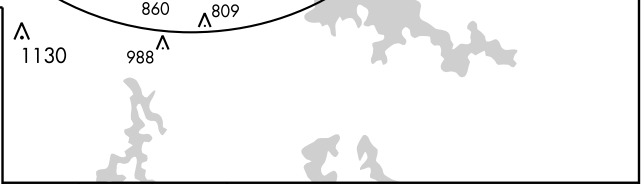
179° 4.9 NM from FAF

TDZE 407

HIRL Rwy 18L-36R
MIRL Rwys 6-24 and 18R-36L
REIL Rwys 6, 24 and 36R

FAF to MAP 4.9 NM

Knots	60	90	120	150	180
Min:Sec	4:54	3:16	2:27	1:58	1:38



CATEGORY	A	B	C	D
S-18L	820-3/4	413 (500-3/4)		820-1 413 (500-1)
CIRCLING	860-1 449 (500-1)	880-1 469 (500-1)	880-1 1/2 469 (500-1 1/2)	980-2 569 (600-2)

CARBONDALE-MURPHYSBORO, ILLINOIS
Amdt 12C 09295

CARBONDALE-MURPHYSBORO/SOUTHERN ILLINOIS (MDH)
37°47'N-89°15'W

NDB or GPS RWY 18L