

AUSTIN, MINNESOTA

AL-5090 (FAA)

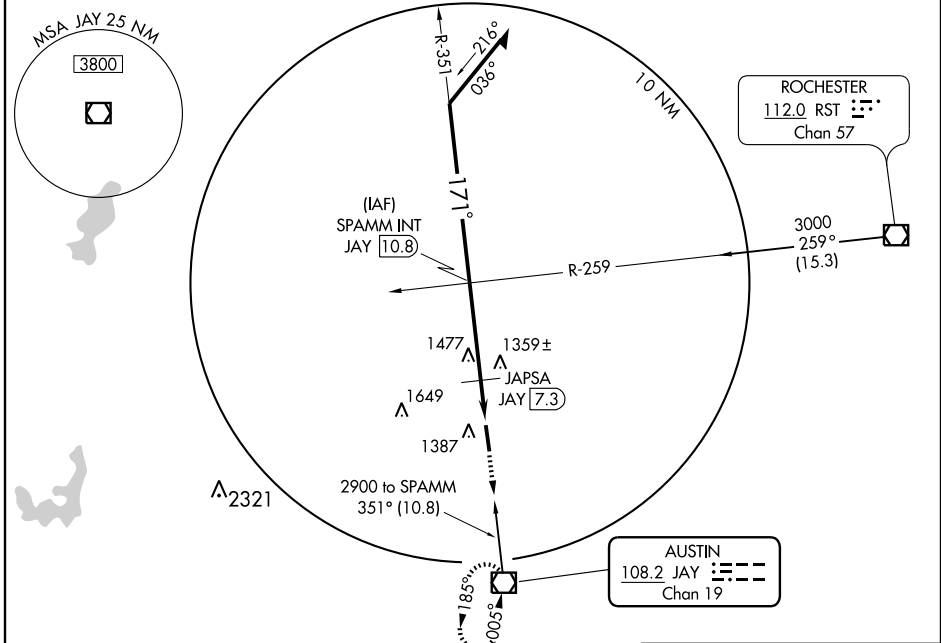
VOR/DME JAY 108.2 Chan 19	APP CRS 171°	Rwy Idg TDZE 1231 Apt Elev 1234	5800
---	------------------------	---	-------------

VOR RWY 17
AUSTIN MUNI (AUM)

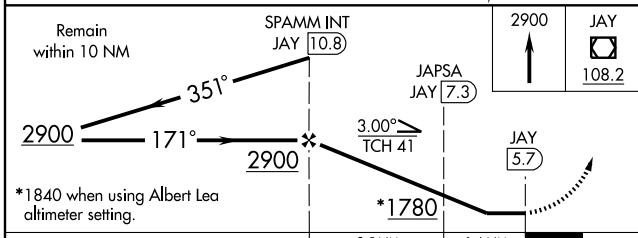
Visibility reduction by helicopters NA.
 When local altimeter setting not received, use Albert Lea altimeter setting and increase all MDAs 60 feet, and S-17 Cat. C/D and circling Cat. C visibility ¼ mile. Increase JAPSA FIX MINIMUMS S-17 Cat. C/D visibility ¼ mile.

MISSED APPROACH: Climb to 2900 direct JAY VOR/DME and hold.

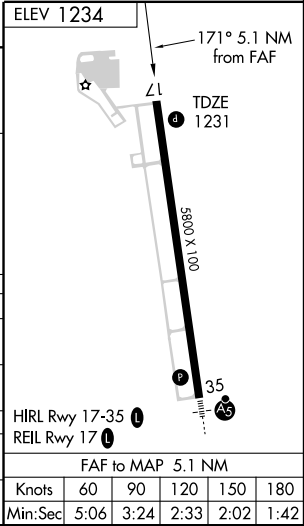
AWOS-3 119.025	ROCHESTER APP CON * 119.8 251.125	UNICOM 122.7 (CTAF)
--------------------------	---	-------------------------------



Remain within 10 NM



CATEGORY	A	B	C	D
S-17	1780-1	549 (600-1)	1780-1½ 549 (600-1½)	1780-1¾ 549 (600-1¾)
CIRCLING	1780-1	546 (600-1)	1780-1½ 546 (600-1½)	1800-2 566 (600-2)
JAPSA FIX MINIMUMS				
S-17	1620-1 389 (400-1)		1620-1¼ 389 (400-1¼)	
CIRCLING	1740-1	506 (600-1)	1740-1½ 506 (600-1½)	1800-2 566 (600-2)



NC-1, 22 OCT 2009 to 19 NOV 2009

NC-1, 22 OCT 2009 to 19 NOV 2009

AUSTIN, MINNESOTA
Amdt 2 08101

43°40'N-92°56'W

AUSTIN MUNI (AUM)
VOR RWY 17

FAF to MAP 5.1 NM					
Knots	60	90	120	150	180
Min:Sec	5:06	3:24	2:33	2:02	1:42