

RNAV (GPS) RWY 17

AUSTIN MUNI (AUM)

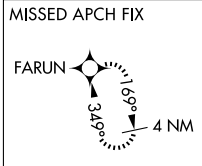
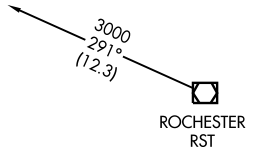
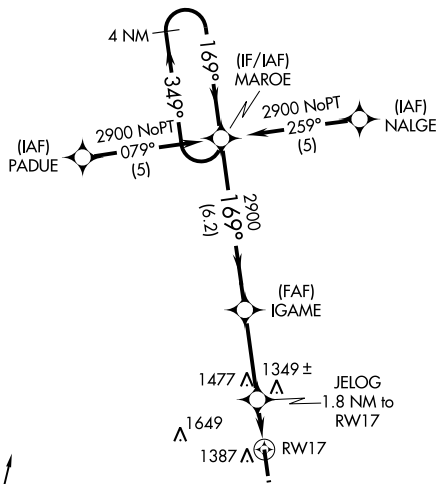
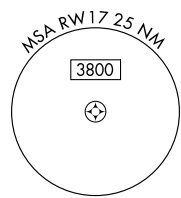
APP CRS	Rwy Idg	5800
169°	TDZE	1231
	Apt Elev	1234

▼ DME/DME RNP -0.3 NA.
▲ Visibility reduction by helicopters NA.
 When local altimeter setting not received, use Albert Lea altimeter setting and increase all MDAs 60 feet, and LNAV Cat C/D visibility ¼ mile.

MISSED APPROACH: Climb to 3800 direct FARUN and hold.

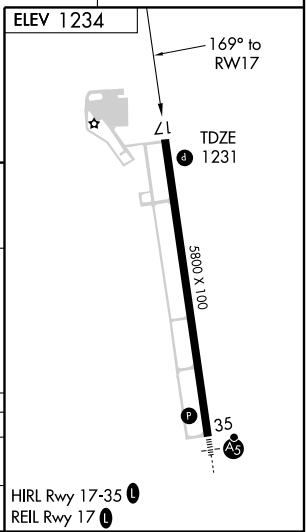
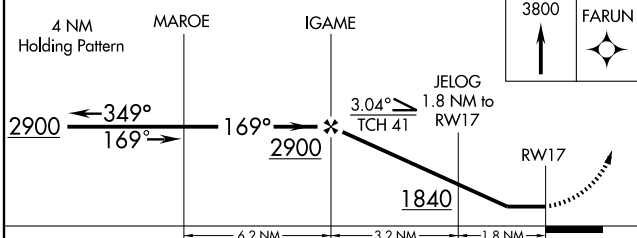
AWOS-3 119.025	ROCHESTER APP CON* 119.8 251.125	UNICOM 122.7 (CTAF) 0
--------------------------	--	--

Procedure NA for arrivals at RST VOR/DME on airway radials 260 CW 329.
 Procedure NA for arrivals at MCW VORTAC on airway radials 343 CW 032.



NC-1, 22 OCT 2009 to 19 NOV 2009

NC-1, 22 OCT 2009 to 19 NOV 2009



CATEGORY	A	B	C	D
LNAV MDA	1700-1	469 (500-1)	1700-1 ¼ 469 (500-1 ¼)	1700-1 ½ 469 (500-1 ½)
CIRCLING	1740-1	506 (600-1)	1740-1 ½ 506 (600-1 ½)	1800-2 566 (600-2)