

ILS or LOC RWY 35

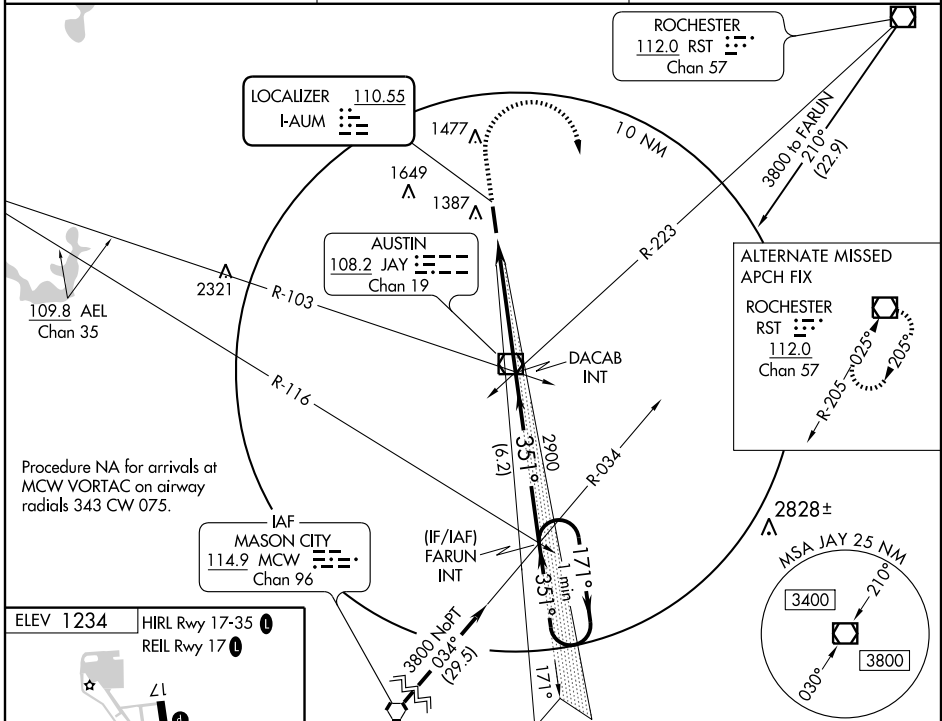
AUSTIN MUNI (AUM)

LOC I-AUM 110.55	APP CRS 351°	Rwy Idg 5800
		TDZE 1234
		Apt Elev 1234

NA Inoperative table does not apply to S-ILS 35 when using local altimeter setting. When local altimeter setting not received, use Albert Lea altimeter setting and increase DA to 1532 feet and all MDAs 60 feet, increase S-LOC 35 Cat C/D visibility ¼ mile. Visibility reduction by helicopters NA. For inoperative MALSRS, increase S-LOC 35 Cat A/B visibility to 1 mile, when using Albert Lea altimeter setting increase S-LOC 35 Cat A/B visibility to 1 mile.

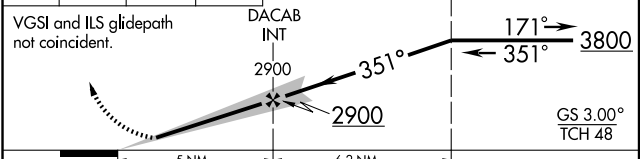
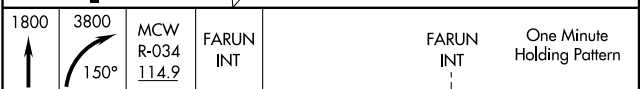
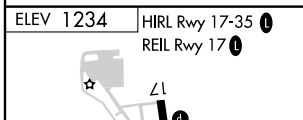
MALSRS
MISSED APPROACH: Climb to 1800 then climbing right turn to 3800 via heading 150° and MCW VORTAC R-034 to FARUN INT and hold.

AWOS-3 119.025	ROCHESTER APP CON* 119.8 251.125	UNICOM 122.7 (CTAF)
--------------------------	--	-------------------------------



NC-1, 22 OCT 2009 to 19 NOV 2009

NC-1, 22 OCT 2009 to 19 NOV 2009



CATEGORY	A	B	C	D
S-ILS 35	1484-¾ 250 (300-¾)			
S-LOC 35	1700-¾ 466 (500-¾)			
CIRCLING	1740-1	506 (600-1)	1740-1½	1800-2 566 (600-2)