

RNAV (GPS) Z RWY 23

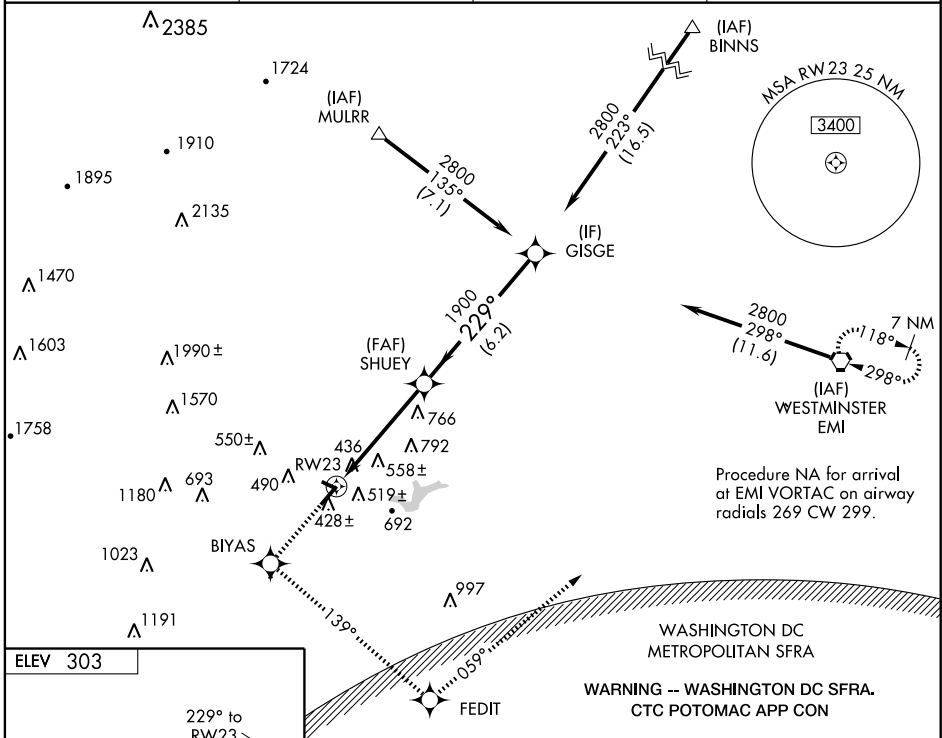
FREDERICK MUNI (FDK)

WAAS CH 81802 W23A	APP CRS 229°	Rwy ldg TDZE 296 Apt Elev 303
--	------------------------	---

⚠ DME/DME RNP-0.3 NA. Baro-VNAV NA below -15°C (5°F). When VGSI inop, Circling Rwy 5 and Rwy 30 NA at night. Inoperative table does not apply to LPV, LNAV/VNAV all Cats, and LNAV Cat C.

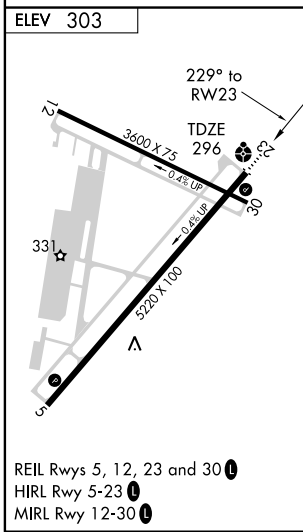
ODALS
 MISSED APPROACH: Climb to 3000 direct BIYAS WP and via 139° track to FEDIT WP and via 059° track to EMI VORTAC and hold.

AWOS-3 124.875	POTOMAC APP CON 125.525 291.625	CLNC DEL 126.9	UNICOM 122.725 (CTAF)
--------------------------	---	--------------------------	---------------------------------



NE-3, 22 OCT 2009 to 19 NOV 2009

NE-3, 22 OCT 2009 to 19 NOV 2009



3000	BIYAS	TRK 139°	FEDIT	TRK 059°	EMI	Procedure Turn NA
						GISGE
						2800
						GS 3.00° TCH 50
						VGSI and RNAV glidepath not coincident.
						2.2 2.7 NM 6.2 NM
CATEGORY	A	B	C	D		
LPV DA	690-1½		394 (400-1½)			
LNAV/VNAV DA	1020-2½		724 (800-2½)			
LNAV MDA	1020-¾	724 (800-¾)	1020-2 724 (800-2)	1020-2¼ 724 (800-2¼)		
CIRCLING	1020-2½		717 (800-2½)			1080-2½ 777 (800-2½)