

RNAV (GPS) Y RWY 23

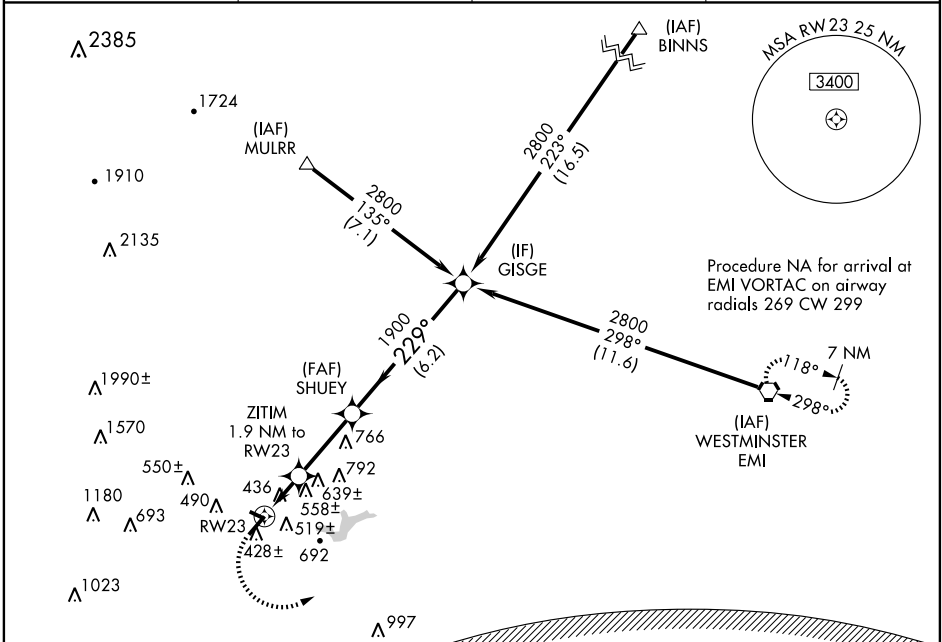
FREDERICK MUNI (FDK)

APP CRS	Rwy Idg	5220
229°	TDZE	296
	Apt Elev	303

▽ DME/DME RNP-0.3 NA.
▲ Inoperative table does not apply to Cat C.
 When VGSI inop, circling to Rwy 5 and Rwy 30 NA at night.

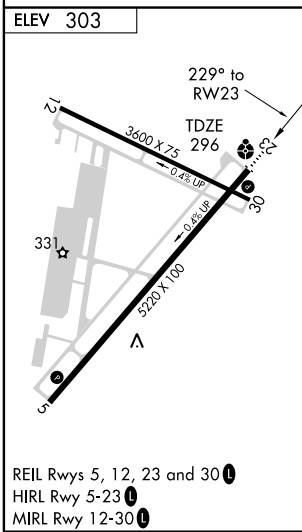
ODALS
 MISSED APPROACH: Climbing left turn to 3000 direct EMI VORTAC and hold.

AWOS-3 124.875	POTOMAC APP CON 125.525 291.625	CLNC DEL 126.9	UNICOM 122.725 (CTAF) 0
--------------------------	---	--------------------------	-----------------------------------

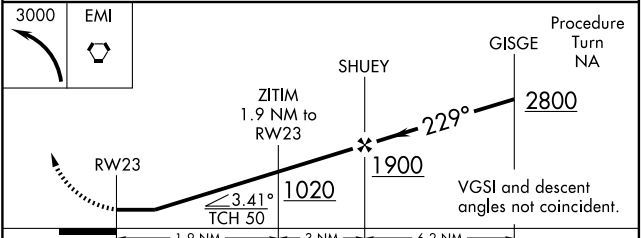


NE-3, 22 OCT 2009 to 19 NOV 2009

NE-3, 22 OCT 2009 to 19 NOV 2009



WASHINGTON DC METROPOLITAN SFRA
WARNING -- WASHINGTON DC SFRA. CTC POTOMAC APP CON



CATEGORY	A	B	C	D
RNAV MDA	820-3/4 524 (600-3/4)		820-1 1/2 524 (600-1 1/2)	820-1 3/4 524 (600-1 3/4)
CIRCLING	900-1 597 (600-1)		900-1 1/2 597 (600-1 1/2)	1080-2 1/2 777 (800-2 1/2)