

ILS or LOC RWY 23

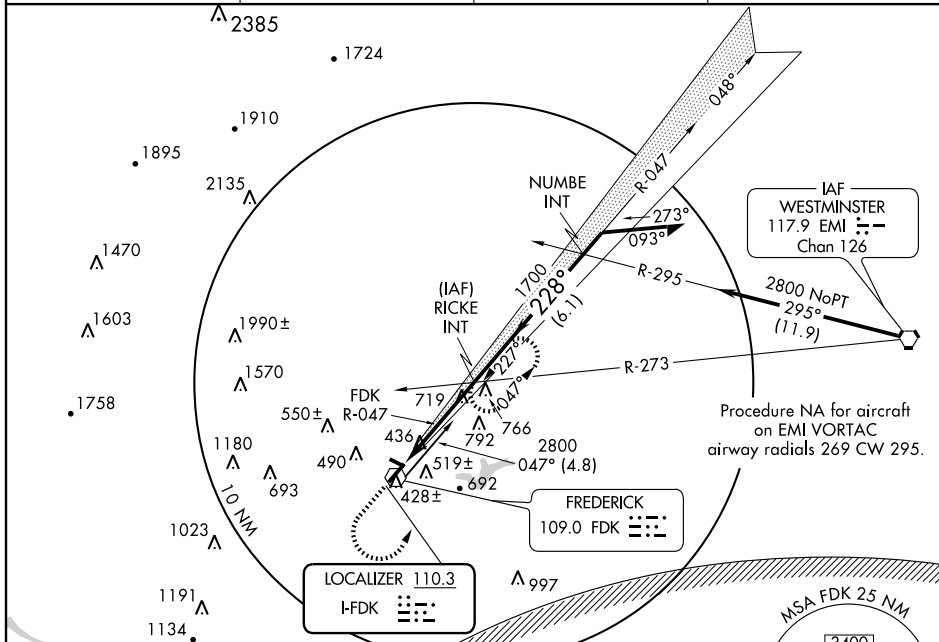
FREDERICK MUNI (FDK)

LOC I-FDK 110.3	APP CRS 228°	Rwy ldg TDZE Apt Elev	5220 296 303
---------------------------	------------------------	-----------------------------	---

NA Inoperative table does not apply to S-LOC Cat C. When VGSI inop, Circling Rwy 5 and Rwy 30 NA at night.

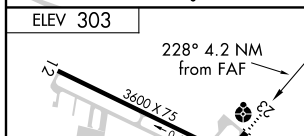
ODALS MISSED APPROACH: Climb to 1300, then climbing left turn to 2800 via FDK R-047 to RICKE INT and hold.

AWOS-3 124.875	POTOMAC APP CON 125.525 291.625	CLNC DEL 126.9	UNICOM 122.725 (CTAF)
--------------------------	---	--------------------------	---------------------------------



NE-3, 22 OCT 2009 to 19 NOV 2009

NE-3, 22 OCT 2009 to 19 NOV 2009

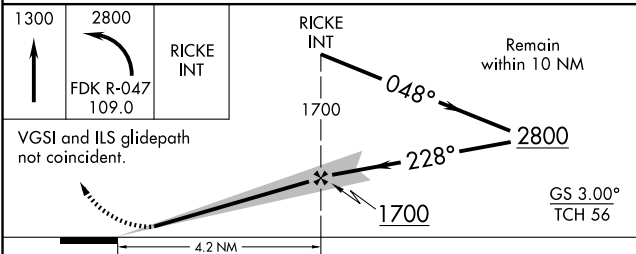


REIL Rws 5, 12, 23 and 30
HIRL Rwy 5-23
MIRL Rwy 12-30

FAF to MAP 4.2 NM

Knots	60	90	120	150	180
Min:Sec	4:12	2:48	2:06	1:41	1:24

WASHINGTON DC METROPOLITAN SFRA
WARNING -- WASHINGTON DC SFRA. CTC POTOMAC APP CON



CATEGORY	A	B	C	D
S-ILS 23		684-1½	388 (400-1½)	
S-LOC 23	1020-¾	724 (800-¾)	1020-2 724 (800-2)	1020-2¼ 724 (800-2¼)
CIRCLING	1020-1½	717 (800-1½)	1020-2 717 (800-2)	1080-2½ 777 (800-2½)