

WINONA, MINNESOTA

AI-5087 (FAA)

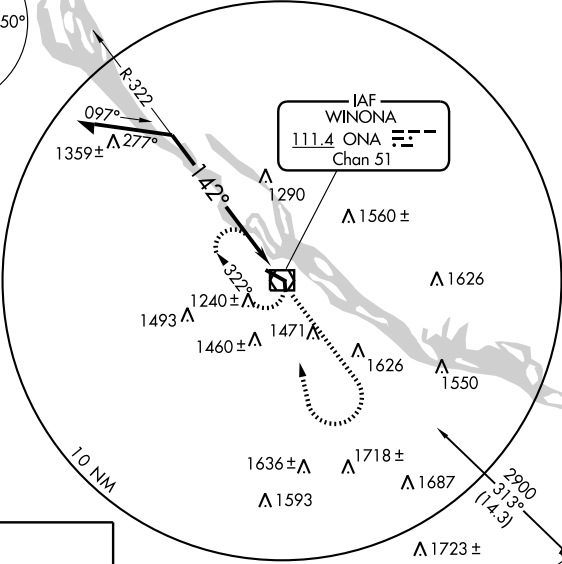
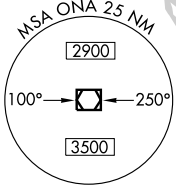
VOR-A

VOR/DME ONA 111.4 Chan 51	APP CRS 142°	Rwy Idg TDZE Apt Elev	N/A N/A 656
--	------------------------	-----------------------------	--

WINONA MUNI-MAX CONRAD FIELD (ON A)

NA	MISSED APPROACH: Climb to 2900 then right turn direct ONA VOR/DME and hold.
-----------	---

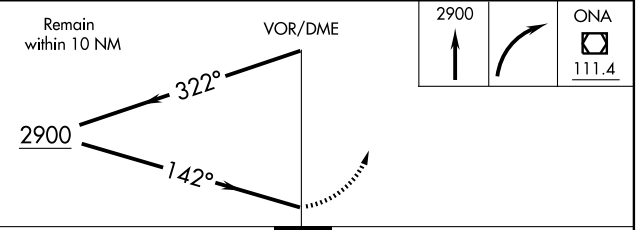
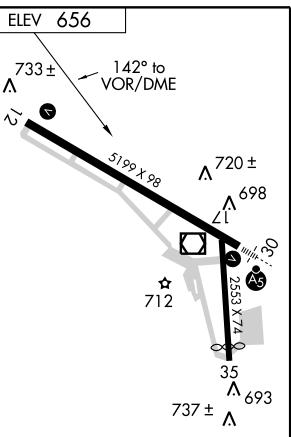
AWOS-3 111.4	MINNEAPOLIS CENTER 128.6 363.0	UNICOM 122.8 (CTAF) 0
------------------------	--	--



2413 Δ

NC-1, 22 OCT 2009 to 19 NOV 2009

NC-1, 22 OCT 2009 to 19 NOV 2009



2900		ON A 111.4
------	--	---------------

REIL Rwy 12 **0**
MIRL Rwy 12-30 **0**

CATEGORY	A	B	C	D
CIRCLING	1660-1¼ 1004 (1100-1¼)	1660-1½ 1004 (1100-1½)	1660-3 1004 (1100-3)	1840-3 1184 (1200-3)

WINONA, MINNESOTA
Amdt 13 09015

WINONA MUNI-MAX CONRAD FIELD (ON A)

44°05'N-91°42'W

VOR-A