

# RNAV (GPS) RWY 30

WINONA MUNI-MAX CONRAD FIELD (ONA)

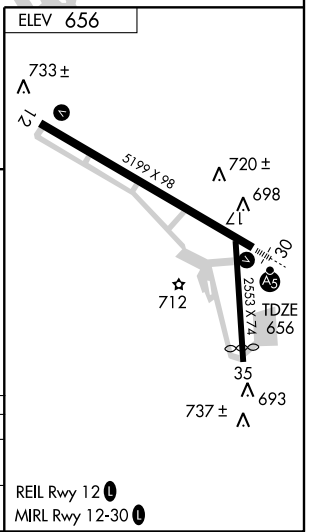
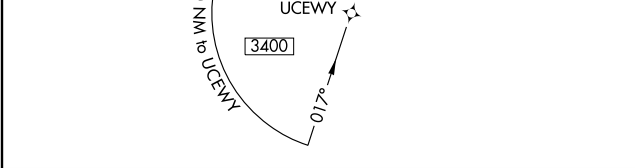
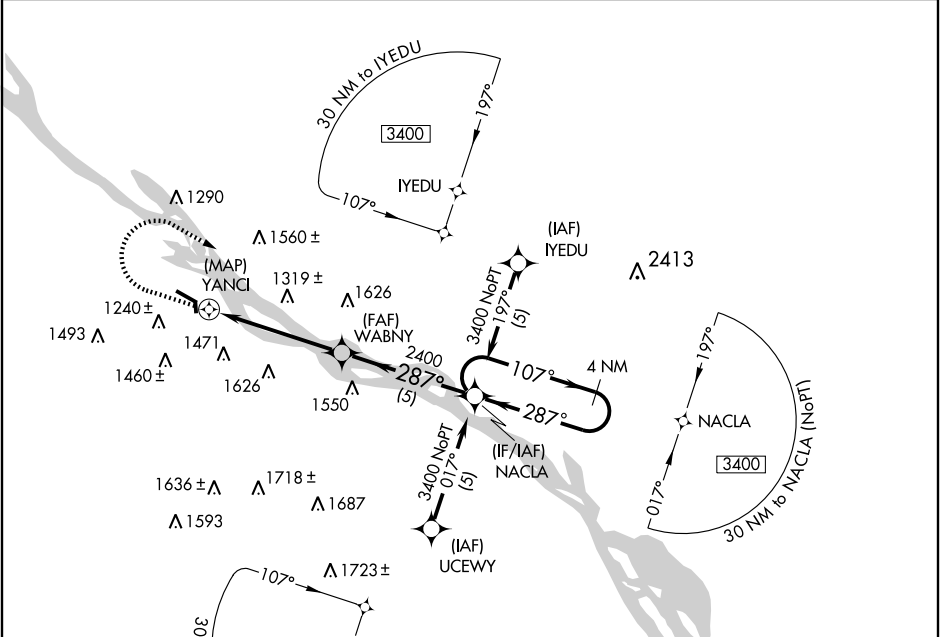
APP CRS	Rwy Idg	<b>5199</b>
<b>287°</b>	TDZE	<b>656</b>
	Apt Elev	<b>656</b>

**NA** GPS or RNP-0.3 required. DME/DME RNP-0.3 NA.

**MALSR**

**MISSED APPROACH:** Climb to 1900, then climbing right turn to 3400 direct NACLA WP and hold.

<b>AWOS-3</b> <b>111.4</b>	<b>MINNEAPOLIS CENTER</b> <b>128.6 363.0</b>	<b>UNICOM</b> <b>122.8 (CTAF)</b>
-------------------------------	-------------------------------------------------	--------------------------------------



1900	3400	NACLA	4 NM Holding Pattern
WABNY		NACLA	
1.9 NM to RWY 30		287°	107°
YANCI		2400	3400
2.93°			
TCH 42			
0.5	1.4	3.6 NM	5 NM

CATEGORY	A	B	C	D
LNVA MDA	1460-½ 804 (900-½)	1460-¾ 804 (900-¾)	1460-1¼ 804 (900-1¼)	1460-2 804 (900-2)
CIRCLING	1600-1¼ 944 (1000-1¼)	1620-1½ 964 (1000-1½)	1620-3 964 (1000-3)	1840-3 1184 (1200-3)

REIL Rwy 12

MIRL Rwy 12-30

NC-1, 22 OCT 2009 to 19 NOV 2009

NC-1, 22 OCT 2009 to 19 NOV 2009